

CCL 30th August 2023 – Kaleido - by John Lockwood



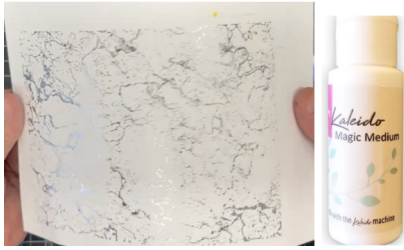
Instructions compiled by June Smith.



On this Craft Cave Live, John has explained all about the Kaleido, especially die cutting, embossing & foiling. I have incorporated these in this set of Instructions. I would advise that you visit them as well as following these instructions through to the end before commencing the project.

Information:

1. There are already lots of videos and instructions on how to use the Kaleido on the fb group, it really is advisable to watch them and read the instructions on them so that all your questions are answered first. The only thing which wasn't covered was using the new Fusion inks which is what we are using today. Sam has very kindly created a play list on the fb group incorporating all the You Tube Video's for the Kaleido.
2. Kaleido Plate Combinations – all details of these are in your instruction pamphlet that you received with your machine.
3. If you use the Craft Artist Essential card which has a texture to it, you will find that it foils 10+ times better than using something like 'Pink Frog' Super Smooth Card, because that won't foil properly.
4. Kaleido ink is a chemical, and it will NOT damage your stamps, John has left his on for over 18 months and it has not harm it at all. If you want to clean it off it is a chemical ink like 'Stayzon' – the cheapest thing to use is your 'anti-bacterial spray'. Or if you really want to get it pristine clean use one of the solvent based cleaners 'Easy-Peezy Stamp Cleaner' from Inigo Blue, use it in your cleaning mat set,
5. This is a really old stamp; I think it is Stamp Addicts which has been foiled in Silver.



Preparation Mat & Layers:

Using wet glue on the back of every layer, as below.
Then put to one side until the end.

White Top Folding Card Blank 6" x 8"

Gold Card 6" x 8"

Purple Card 5⁷/₈" x 7⁷/₈"

Essential White Card 5³/₄" x 7³/₄"

Materials:

CA Essential White Card

Kaleido Machine

Kaleido Ink Pad

Kaleido Re-inker

Kaleido Magic Medium

Kaleido Acetate

Gold Foil

Gold & Pearl Fusion Inks

Press to Impress Stamping Platform

Unmounted Background Stamp of your choicer

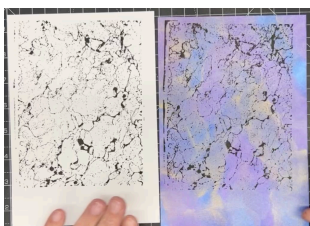
3mm Purple Ribbon

Glue Glaze

Craft Kit

Method:

- Here are 2 pieces that John has already prepared, the first one has been inked with the Kaleido ink and is waiting to be foiled. The second one has a fusion background and then inked over the top with the Kaleido Ink. We will colour the white one first and John will show you how the foil resists the Fusion. Then on the coloured one he will see how it foils when he has coloured it first.



- John is using an unmounted rubber stamp by Stamp Addicts, in the Press to Impress. He has given the back of the stamp a very light spray of glue just to

keep it in place on the lid. Place a piece of CA Essential White Card which has a texture finish up to the top left-hand corner of the platform, add a couple of magnets to secure it at the bottom. Using the Kaleido ink go over the stamp quite a few times as it is a large area (by keep tapping it, 'cha, cha, cha. '), then close the lid and press down all over with the new blue stamping tool. Open the lid and as you can see, because of the size and detail of the stamp it is not as crisp in the middle as it is around the outside, this is quite normal.

- Take your bottle of 'Re-Inker' and add some all over the ink pad, especially if you use the ink pad constantly you will find that it soaks in very quickly. Then first of all drag the ink pad down over the stamp a few times and then repeat the 'cha, cha, cha' inking all over the stamp, close the lid and press down especially in the middle. Open it up and if necessary repeat again. Once you are happy with it, put it to one side to let the ink settle in, whilst you either do some more inking & stamping, or prepare your card base and layers.
- Plug in the cable which comes with the Kaleido, turn your electric socket and the Kaleido switch on, it will take about 8-10 minutes to heat up.



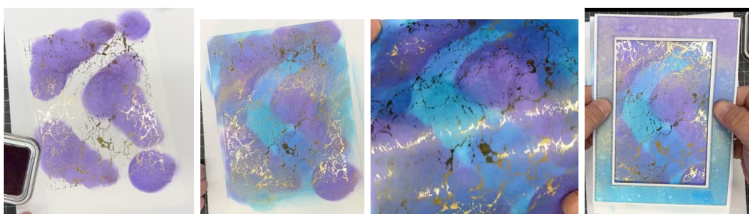
- John is going to use a piece that he made earlier. The plate combinations he is using is the base magnetic plate, 5mm plate, new plastic shim, 3mm plate, then the inked card. It used to be that you had a little thin piece of metal in your kit to hold the foil into place, or you were advised to fold a little bit of the foil over the top of your card – however this is no longer necessary, what you do is to place the gold foil (especially made for the Kaleido), over the top, cut any excess off at the bottom of the roll. Then use a long piece of the new pink removable tape which is long enough to go around the top and just securing it to each side of the plates. and add at the top and just over both ends to secure it on the plate. Feed the foil though your machine slowly. **Important:** please do not use scotch tape or anything similar to that as it will not take the heat, it will melt the sticky glue and you will ruin your work.



- You will see that the pink tape is no stickier than it normally is. Carefully peel back the foil to see how it has covered all the ink with the gold foil.
- We don't want to waste the gold foil we have just used, so take a piece of card which has been covered with Magic Medium and left to dry for about 30 minutes. Add the foil over the top, it is **very important** that you cut off any of the white card which is not covered by the foil as the glue from the Magic Medium will stick to your rollers. If you do this by mistake there is a video in the group which shows you how to clean it. Then when you peel off the foil you will see that there is nothing on the foil, the gold has covered the white card everywhere except the pattern of the stamped image.

Fusin Inks over your Foiled Card:

- Place your stamped foiled piece over a larger piece of white card, this is because you will be going over the edges of the card and we can use the background you are creating on it for another project. Using the Grape Fusion Ink and the relevant dauber, go over the foiled card in a circular motion in various places. Then repeat using Blueberry, and then Azure. Take a soft cloth and rub over the card front, this will help the fusion to shine over the foil.

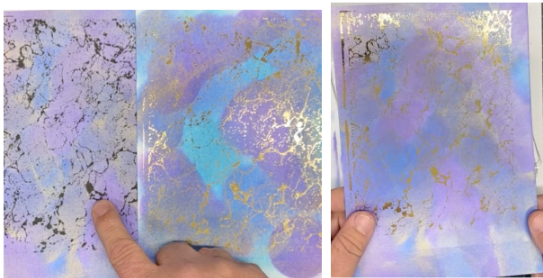


- If you then make a white background frame and another piece of Fusion card using the similar colours that has not been foiled, you can see how beautiful it looks.
- The next test is bringing in the gold foil piece – don't know if this is going to work!. Go over it with the Blueberry and then Grape, then using your soft cloth, polish the excess fusion off and Wow! look how amazing that looks – it

is putting the colour onto the white but only lightly, which is exactly what we want.



- Next we bring in the other piece he made about an hour ago, and if you place the one we have just done next to it you can see that the gold has risen up to the surface once the fusion has dried. So, this means that the one you have just made, once it has dried, you will see the shine comes back. We will be using the first one now.



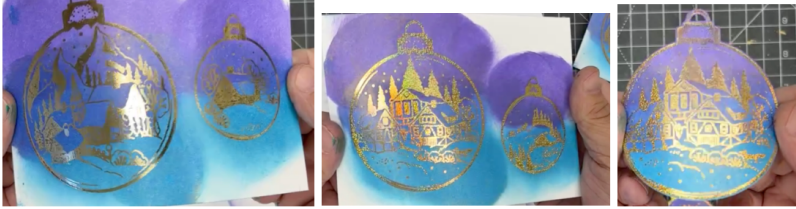
- Let's see if the foil will stick to the fusion ink, we know it will stick to the Kaleido Ink. Take another piece of the gold foil and in exactly the same way as before, taping it down and running through the Kaleido. Another Wow!, we have not lost any of that gold from the fusion ink. John's preference is probably stamping over the top. We have now made our background.

Baubles:

- John has previously stamped 4 of the different bauble designs using the Kaleido Ink and the 2JJ's Baubles set which now dried. Add the foil over one of them, and this time fold over the top edge making sure that when it goes through the machine the top edge doesn't lift up. Turn the handle slowly, as before, so that the foil comes out nice and even. Then using the Holographic Gold foil this time onto the other piece of inked baubles (there are 4 different design) and run that through your machine the same way.



- Using the same 3 Fusion Ink colours, starting with the grape, go over the top of the 4 baubles. Then add the Blueberry across the middle and finish with the Azure at the bottom. Then rub over them using your soft cloth. The heat doesn't have to be turned off to die cut – just don't leave your plates in there when it is hot.



- Bring in the dies that match the baubles, tape them down using the pink tape. Then run through your machine.
- John has a separate set of plates for foiling. The other set is for die cutting and embossing. See the photos below which shows the case that he keeps for foiling, so it has everything stored in it, including leaves, yes you can foil over them too. Then when he has finished foiling he puts the plates back into the case. You don't have to do that it is your preference – remember John does an awful lot of foiling, die cutting, embossing etc, especially for TV samples, TV shows and craft fairs.



Using the Stamp which comes with the Kaleido.

- John has already inked up the stamp, which is now dry. As we used the Holographic foil over the top of the baubles, we will repeat this on this stamped image. Oh dear, John has inadvertently used the wrong ink, so easily done. So, let's see if he can do another one quickly using the right ink, he will use the same piece of pink tape and foil. "John is doing things that he tells us not to, so, do as I say not what I do".

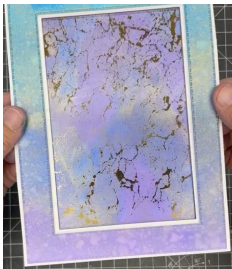


- He is running it through the machine slowly, thankfully when he reveals the foil it has worked perfectly, that was a bit of luck John.. The stamp is a sketchy, distressed one, it was designed that way.
- Add the die plate that come in the kit, secure over the top with the pink tape, and cut out. Keep the waste and use that as a stencil or add the background

we made earlier onto the back and a frame that has been made using the Presscut Stitched Dot & Plain rectangle dies that John made earlier to it.



- Add foam tape to the back of the frame, remove the yellow covering and add that onto the background. Use your scissors to trim off the excess. Remember to use the graph sheets to cut any frame size you like, that means that you are not stuck to any one size at all.



- Stick to the 'Tattered Lace' or the 'Craft Master' foil, which is the same but more expensive. You can't use the foil that you get with the Glimmer, it has to be a tailor-made heat activated foil. Ones like Couture Creations will not work, so don't waste your money. Or get them both and use a different process to make each type. There is a lovely lady called Joanne Hedges who makes the most beautiful samples, which are on the facebook group.
- Add 3 layers together of foam tape on the back of one of the large baubles, and add to the left-hand side of your card, then on the next large bauble add 4 layers on the back and add that overlapping, and down slightly, on the right-hand side. Then we want to add the small bauble on, so we add a piece down one side, then 5 pieces on top of each other next to it.



- Take a long piece of 3mm Purple ribbon thread it through the top bauble first, pull the ends so they are both even then holding the ribbon with your thumb and finger turn the card over, tape the ends down with Sellotape and snip off the ribbon. Repeat this for the other 2 baubles. You can see then how the colour had changed just by adding a Purple ribbon onto it. Personally, I find it

easier to just thread the ribbon through the baubles first before I adhere them onto the card, but that is my preference.

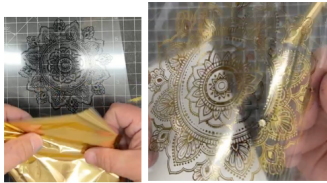
- We are then going to use Glue Glaze on the back of the snowflakes and add these onto the card, that will then bring the gold colour back to the front.



- Finally, we need to bring in our mat & layers we prepared first. Add wet glue onto the back and adhere this onto the mat & layers.

Foiling onto Kaleido Acetate – It is VERY important that you leave the stamped Acetate at least 24 hours to dry.

- You can add foil onto the Kaleido acetate. The stamp John is using is a ‘Nellie Snellen’ Sunflower Mandala stamp, if you look on The Art of Craft Website you will see it there. Stamp up your acetate in the normal way with the Kaleido Ink, then add gold foil over the top and secure down.



I hope you have enjoyed these instructions.