

CCL Garden Window JND402 – by John Lockwood



Instructions compiled by June Smith.

As always, I would recommend that you read the instructions through to the end before you commence any project.

On John's CCL 25th May 2023, he is demoing how to make a beautiful Window box card, as well as using some of the Fusion Sprays to make a background and cut out some of the new dies from the Flower Collection. I would advise that you watch the CCL as well as following these instructions.

June's Tips: This applies to any die, place your pieces onto your cutting plate at an angle, this helps to cut the dies in one pass. Also use your glue eraser to remove any unwanted marks.

Information:

- The Garden Window die set consists of 3 dies, the outside stitched die (No. 1) measures 4" x 6" which is a perfect scrap booking size for the card today. Die 2 is the outer arched window and die 3 is the inner window panels.

Materials

6" x 8" White Card Blank

Garden Window JND401 (3)

Garden Fence JND402 (6)

Sunflower JND405 (3)

White Card 300gsm

Topiary Trees JND367 (11) there are 2 cats, in the set cut these out of glossy black card – optional.

Kraft Card

Black Card

Fusion Reactive Sprays in Mint, Bubblegum, Lemonade, Pistachio

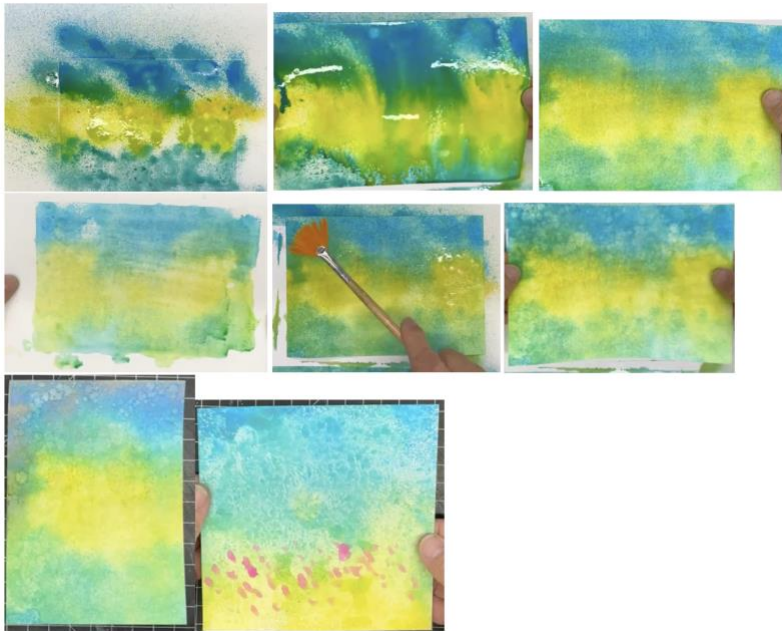
Versafine Vintage Sepia Ink Pad

Piece of Acetate

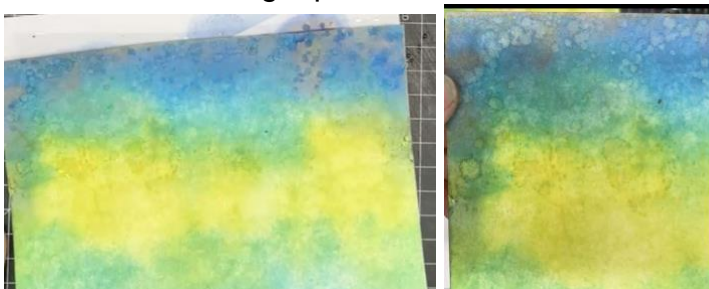
Gold Fusion Inks in the Sun Fruit, Blueberry and Lime
Black Pollen
3M Craft Mount Permanent Adhesive Spray
Craft Kit

Method:

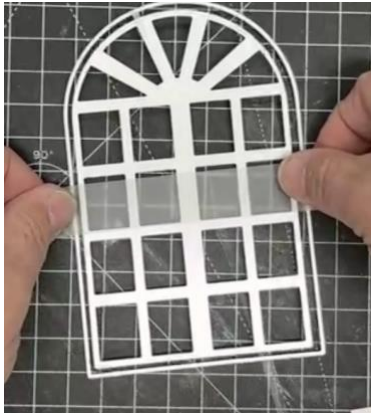
- Using the Fusion Reactive Sprays in Mint, Bubblegum, Lemonade and Pistachio, spray onto some white card (p 1), spritz with water, move the card around so the colours run into one another (p 2). Add another piece of card over the top of your sprayed design to mop up some of the fusion (p 3), you can let it dry naturally or use a heat gun, this moped up print piece (p 4) will be used to make some of the flowers. Take your fan brush, dip into water and flick water splashes over the design, you can then see the splash marks beginning to come to the front (p 5), mop it up with a piece of kitchen paper which will make flowers from - and on (p 6 & 7) you have then created your garden background and also some card to cut the flower dies out of. There is separate videos and instructions on exactly how to do this on the facebook group. The 6th photo is one that John made earlier.



- Bring in your Blueberry Fusion ink pad and using a dauber go around the top of the sky a little bit just to darken it, of course you also get the gold from the fusion ink showing through, fan brush a little bit of water onto the top area, and you can see the water splash marks coming through, you can see this in the following 2 photos.



- Cut 3 of the window sets from 300 gsm white card, with dies 2 and 3 together from the Garden Window - using John's long piece of tape trick of picking up the inner die, then using the low take tape as handles you can position the die in the exact position inside the outer die and press down.



- Cut another piece of 300gm white card to 5" x 7", then from the centre cut the arch die (no 2) from the Window set. Add spray glue to the back and place this onto a 5" x 7" piece of acetate.
- Use spray glue on the back of your 3 window pieces, add them individually onto the inside of the frame, you will then have the frame with some depth to it, just like a real window frame. If you then just place over your background piece you have just made, you can see the lovely garden view through the window.

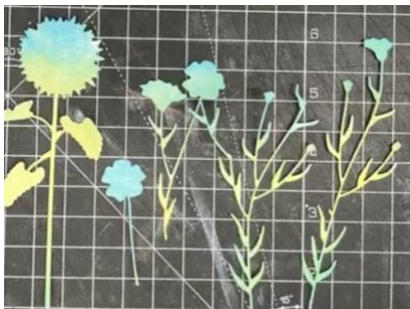


- Cut your background piece in half, one piece will go behind the window eventually and the other will be used for another project.
- Bring in your print piece we made earlier (p 4 above) and also the main Sunflower die and Willow Herb die, tape them down, cut the end off so that it will go through your die cutting machine - pop out the Sunflower and Willow Herb dies, you can see in the photo below how beautiful the Sunflower is when cut out. Carefully remove the Willow Herb die, and add that to the other piece, run this through your die cutting machine, but leave the die in the card. Pop it face down in your spray box and lightly spray the back, then bring in a piece of black card and add your piece onto it, you can then remove the die, trim the black down either with scissors or a guillotine and you have spray glue the back of the pattern piece with the die still in place, then add this to the black card, remove the die, then add to a card blank, all you then need is

a small sentiment strip and you have made another beautiful card all from the waste.



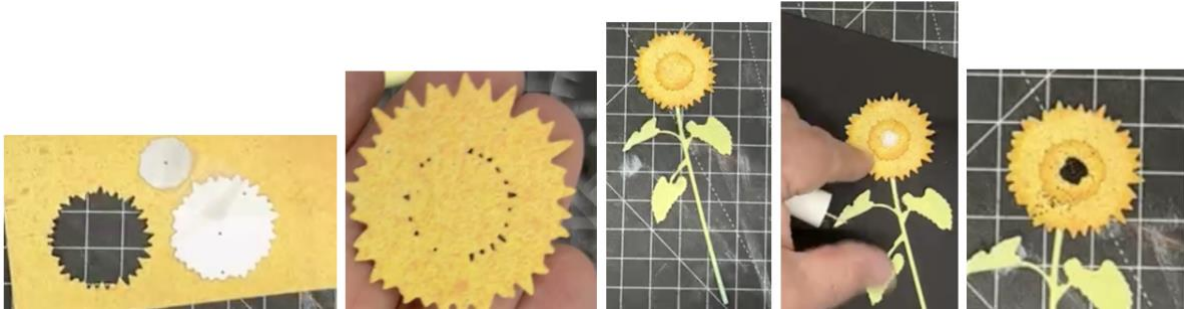
- Bring in the Willow Herbs die cuts, we want to use these as herbs in the background so trim the flower heads off, keep the bottom pieces because these can be used as grass or fill in pieces.



Q: if you have had some Fusion Ink pieces for a while, can you add water to them to re-activate them – A: yes, John demo'd this on a piece he had for a few weeks, and it worked beautifully.



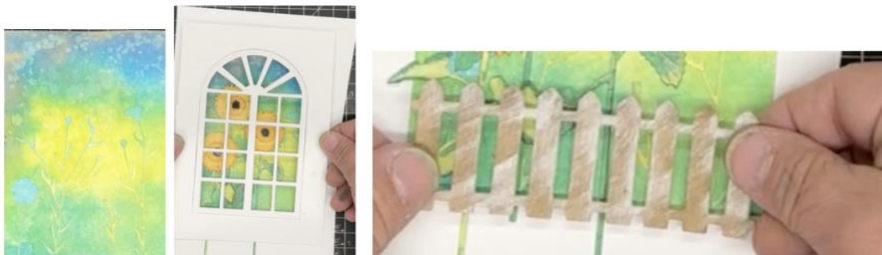
- John brought in a piece of card which he had sprayed Lemonade and then Pumpkin pie over, which makes a perfect card for the Sunflower. By the way you will need 4 Sunflowers in total for the card today, John had already prepared 3 of them earlier. Cut out the large Sunflower head and the smallest centre die from the yellow piece. Bring in your Sun Fruit Gold Fusion ink pad and use a dauber to just go around the edges of both the flower heads.



- Glue them onto the main Sunflower base we cut out earlier. Add just a small circle of wet glue onto the Sunflower head and add some of the black pollen onto it, **Tip:** it is useful to do this on a piece of copy paper or one of the trays with a hole at the end to capture the excess pollen.....yes it goes all over the place – I know because I did it once myself without something to capture the excess in, I was still finding little black pollen weeks later.
- John has already prepared 3 Sunflowers but one of them had yellow leaves, so he used Gold Fusion Lime ink pad to go around the edges so that it made it look more realistic.



- Bring back in the other half of the background piece that we made in the beginning, this will go behind our window. Using your spray glue on the back of the willow herb pieces, add these onto the garden area as well as any snapped pieces from the willow herb. If you have any hanging over the bottom cut those off but they can be added to the piece to give grass effects.
- Spray glue the back of this and add it to a piece of white card, if you position the window over it you can start to see how it is coming together. We can trim the white card down later.
- Using wet glue on the back of 3 of the Sunflowers, add these onto the background, keep checking how it looks by positioning the window over the piece.
- John has already cut out the fence from a scrap piece of kraft card, he has also used White Pearl Fusion Ink (which will be coming very soon) onto the front of the fence to give it that weathered look. Add wet glue to the back of the fence and add onto the front.



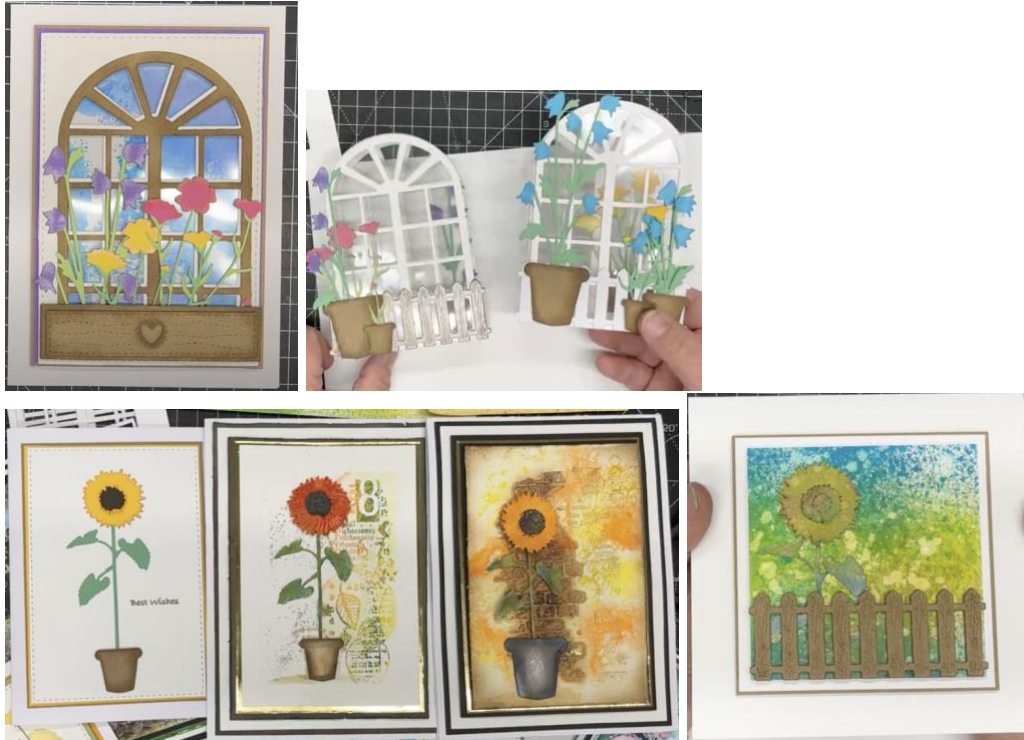


- John has already made a frame which he could use over the top of the piece to finish off his card, to make a 'Van Gough' inspired card, see photo below, but he will not use that today but keep to one side for another card.
- Cut out the 2 window box dies from kraft card, use Versafine Sepia around the edges and also a little bit of the white pearl fusion (coming soon) ink onto the front to give that weathered look. Take a tiny scrap of yellow card and glue this behind the heart cut out of the window box. Add foam tape to the back of both pieces and layer them up.
- We will now add the window, so on the reverse add 2 layers of 2mm foam tape to the back, remove the yellow backing and add over the flowers. Use your large scissors to undercut the overhanging white card.
- Cut a piece of black card to 5¼" x 7¼", add the window onto this so that you have a 1/8th border, then add this onto the 6" x 7" White Card Blank.
- Bring in the window box, remove the yellow back tape and add onto your window. Finally add one of the little black cats onto the window box – or you could leave it off if you wished.



I hope you have enjoyed these instructions.

Here is some more samples made by John and the Angels.



Samples using the new 2JJ's stamps launching on Create & Craft 29th May, Bank Holiday Monday. The red rose card is one of the cards that John will be demoing on the show.

