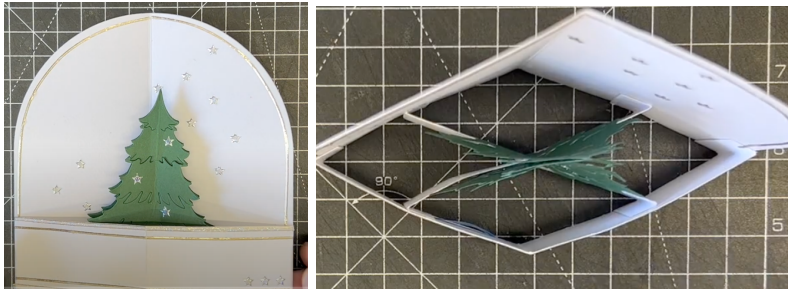
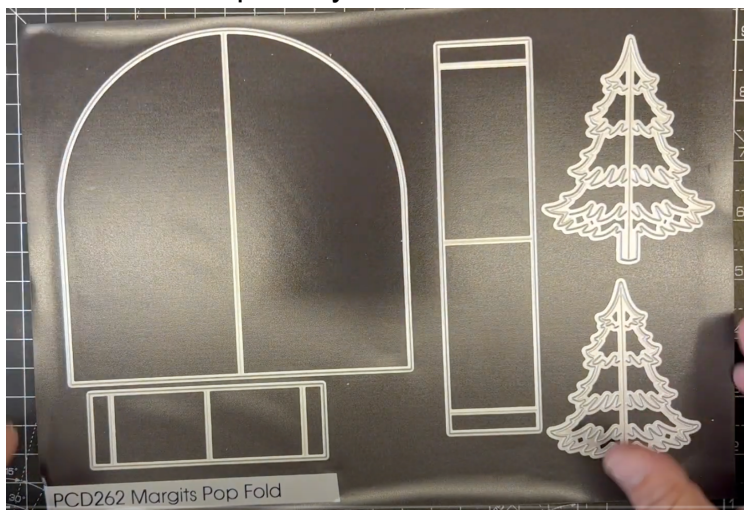


Margits Pop Fold Card -- by John Lockwood



Instructions compiled by June Smith.



John has created a 'You Tube' video using PCD262 – Margits Pop Fold Card, 31st July 2023, I would advise that you visit this as well as following these instructions through to the end before commencing the project.

June's Tips: This applies to any die, place your pieces onto your cutting plate at an angle, this helps to cut the dies in one pass. Also use your glue eraser to remove any unwanted marks.

Information:

- Die 1 – Back Panel
- Die 2 – Front Panel
- Die 3 – Side Panel
- Die 4 - Large Tree
- Die 5 – Small Tree

The tree dies have an embossed fold line down the middle and some cut lines on the different tree layers which can be poked out for more dimension on the trees especially if you wanted to add snow onto the branches. What I do when I have a new die with mechanisms on it, I would make the card up with spare card, then once it is complete I would then know where to add things onto the back and bottom front

panels and also the tree before sticking it all together, but as usual this is just my idea.

When completed the card will fit into a standard 6" x 6" envelope.

Preparation:

Cut die 1 back panel once in white.

Cut die 2 front panel once in white.

Cut die 3 side panels twice in white.

Whichever 'tree' die size you want to use you will need to cut 2 of them in green.

Materials:

White Card

Green Card

PCD262 – Margits Pop Fold Dies (5)

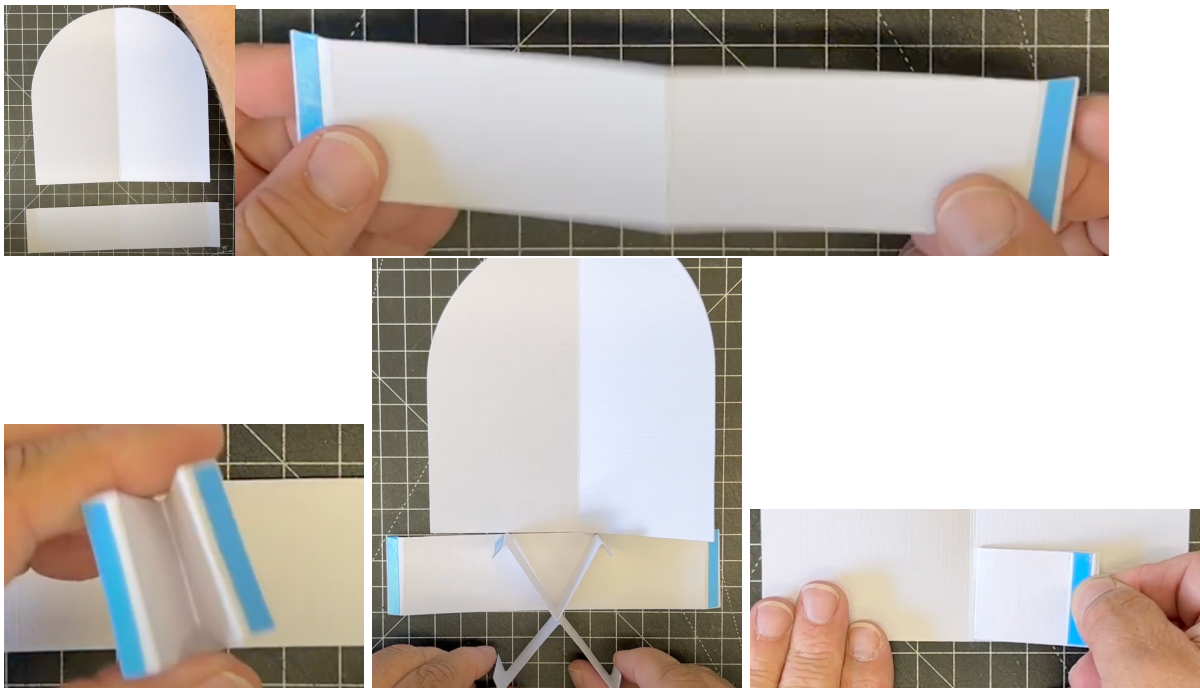
Blue Powertape, or a descent red liner tape as you need a very strong/good quality tape for this.

Craft Artist Super Tacky Glue

Peel offs or similar decoration for your card.

Method:

- Take your back panel and fold this in half.
- Take your front panel and make 3 mountain folds, add blue power tape on both ends.
- Take the 2 side panels, fold the 2 outside ends as mountain folds and the middle is a valley fold. Add blue powertape on both ends.

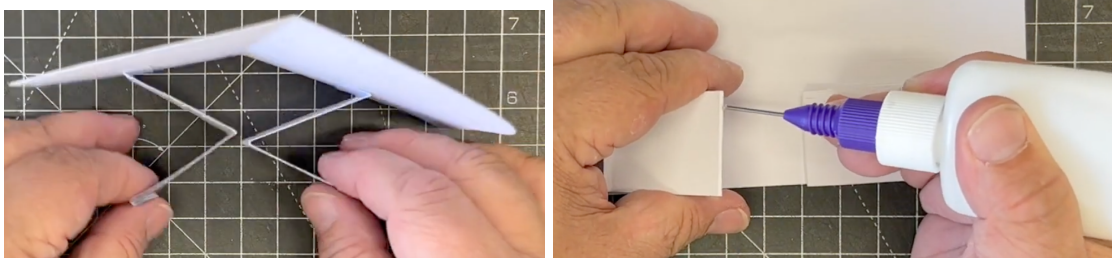


Internal Mechanism:

There are a couple of options for doing this, option 1 is how John has done it on the video as follows:

Option 1:

- Take one of the side panels, remove the blue backing from one end, fold the strip in half and put the fold line up to the middle fold of the bank panel.
- Repeat this for the other piece, lining it up with the centre fold.
- Run a little bit of strong glue, down both of the middle folds only (NOT the back panel) Craft Artist Super Tacky glue is perfect for this.



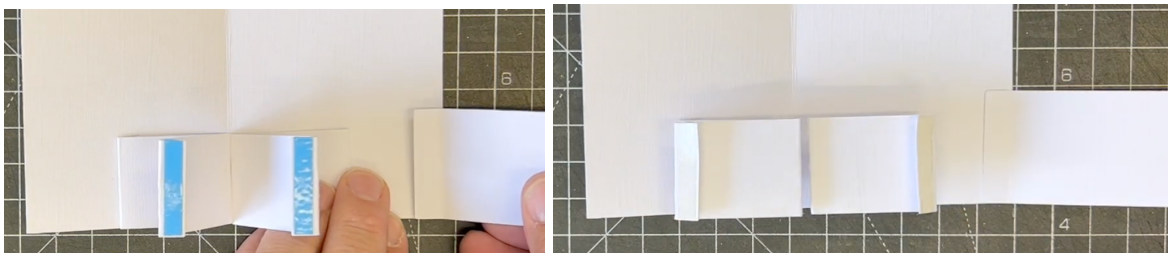
Option 2:

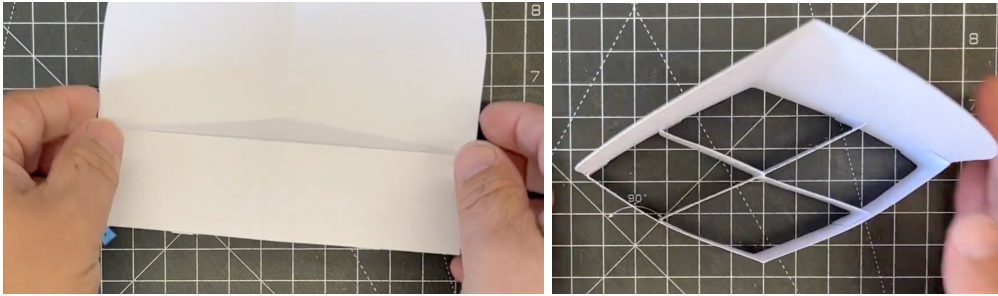
We will stick the 2 side panels onto one another, so you have a mountain onto a mountain and then once the glue is dry add the 2 ends onto the main panel.

- Keeping the blue backing still on both ends. Open out one of the side panels, so you are looking at the mountain fold in the middle – run a thin line of super tacky glue down the fold line, then bring in the other side panel and place the middle fold line evenly onto the other middle fold line, it is important to get them in exactly the right position, press down until they are stuck, the glue works quickly.
- Remove the blue backing tape from one end, place the middle join onto the middle fold line of the back panel and press the end down, then repeat at the other end.

We can now continue to add the front panel:

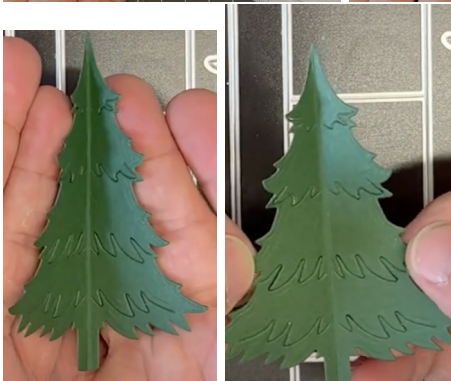
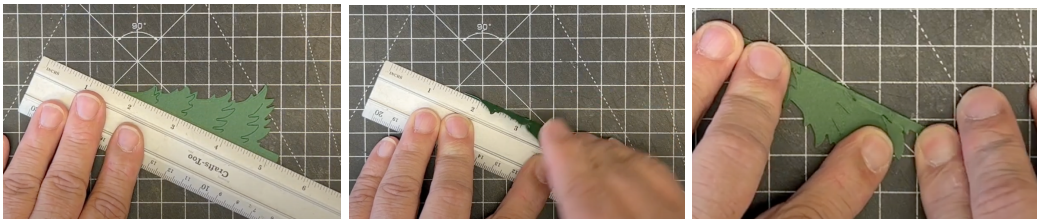
- Remove the blue backing tape from one end of the front panel, add this exactly onto the edge of the back panel, fold it over and check that it is lined up with the edge of the back panel.
- Open the front panel out and remove the blue backing tape from the 2 side panels and bring the front panel over and press down on the side panels – are you with me so far ?- you can then remove the blue backing tape from the other end of the front panel and press it down, your mechanism is then complete.



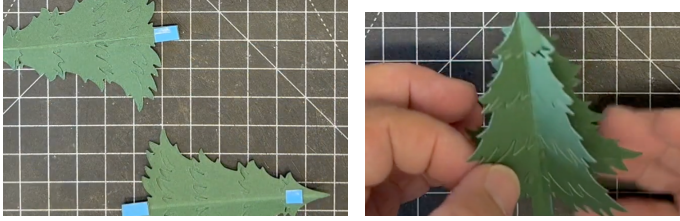


This may look complex to do but it really isn't, once you have done it you will want to make more. This is not only for Christmas, but there are also so many occasions when you can make this card, I am sure the samples from John's Angels will give you lots of inspiration too. Thinking about it there may be times when you want to add different elements into the middle of the card, and it might be an idea to add these before you add the mechanism into place, but that is just an idea that popped into my head.

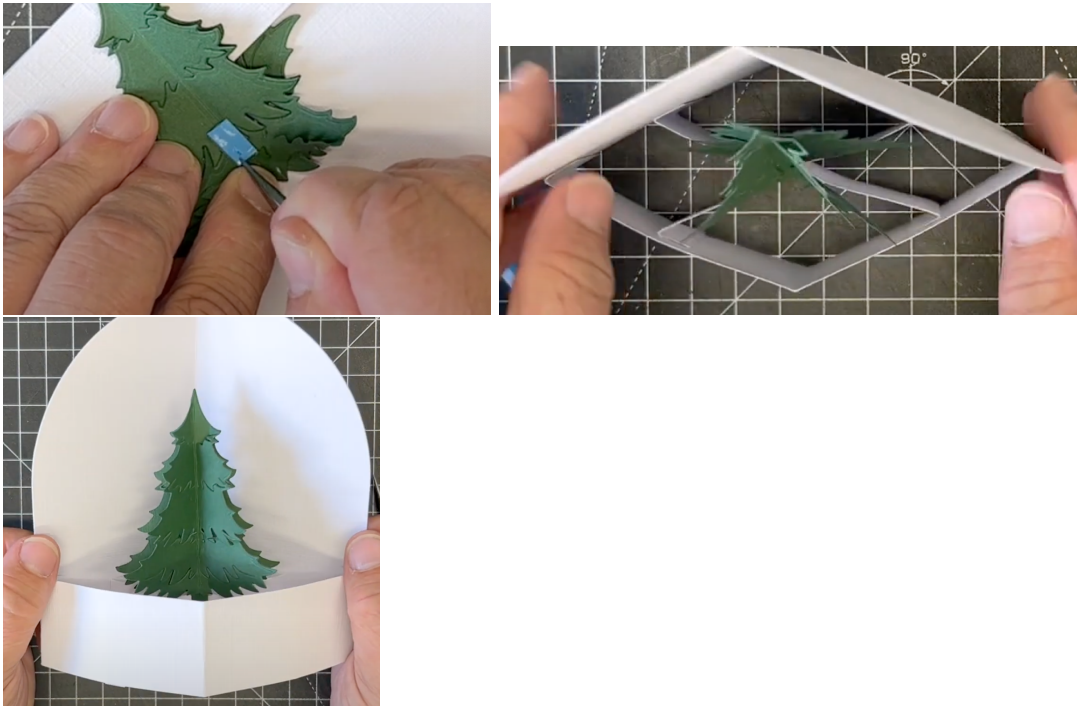
- Bring in your 2 Christmas trees, the easiest way to fold them is to take a ruler and place it down the middle just very slightly to the left of the fold crease, hold the ruler firmly and bring up the right side of the tree and fold it against the ruler, then you can remove the ruler and crease down the fold line.



- Taking the trees, add a little bit of 6mm blue power tape onto the back of the bottom trunk of the trees, and a small piece at the top of one of the trees. Remove the blue backing tape from the top of the tree only, then run a little line of wet glue along the back of the fold line on one tree (tip if you wanted to add a cut out star onto the top of your tree you should do this now), Then as the trees are completely symmetrical you can add the other tree - fold line to fold line on top, I hope this makes sense.



- If you wanted to you could add some decoration to the tree before you add it inside the card, like a piece of silver twine, and very small baubles, or even some candles, I am sure you have dies for this in your stash.
- When you are ready to add the tree onto the inside mechanism, remove one of the blue backing tape from the tree, making sure that they don't stick to each other, and add the tree onto the inside mechanism where it crosses over – then from the bottom of the card turn the other base of the tree over and remove the blue backing tape and add that base of the tree into place.



Your card is then ready to decorate as you wish.



I hope you have enjoyed these instructions.