

## Margits Trees -PCD263– by John Lockwood



Instructions compiled by June Smith.

John has created a 'You Tube' video using PCD263 – Margits Trees, dated 13<sup>th</sup> August 2023, I would advise that you visit this as well as following these instructions through to the end before commencing the project.

**June's Tips:** This applies to any die, place your pieces onto your cutting plate at an angle, this helps to cut the dies in one pass. Also use your glue eraser to remove any unwanted marks.

### Information:

The tree dies have an embossed fold line down the middle and some cut lines on the different tree layers which can be poked out for more dimension on the trees especially if you wanted to add snow onto the branches.

### Preparation:

Mat Layers onto your 5" x 5" White top folding card blank

Using wet glue cut out and matt all the layers up.

- 1 – Green Satin 4<sup>5</sup>/<sub>8</sub>" x 4<sup>5</sup>/<sub>8</sub>"
- 2 – Coconut White 4<sup>1</sup>/<sub>2</sub>" x 4<sup>1</sup>/<sub>2</sub>"
- 3 – Christmas Green 4<sup>1</sup>/<sub>8</sub>" x 4<sup>1</sup>/<sub>8</sub>"
- 4 – White Star Embossed 4" x 4".

### Materials:

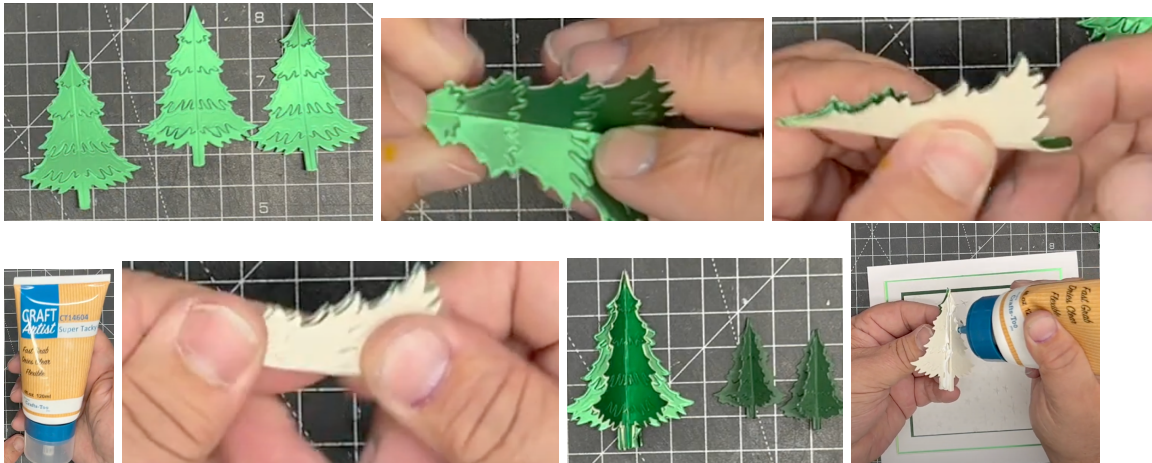
5" x 5" White Top Folding Card Blank  
PCD263 – Margits Trees (5)  
Essential Coconut White Card  
Essential Christmas Green Card  
Craft Artist Emerald Satin Card  
Craft Artist Super Tacky Glue  
Craft Artist Red Pearl Dimension

### Method:

- Using the 3<sup>rd</sup> largest tree die, cut out 3 times from of the Emerald Satin Card. There is an embossed fold line down the centre of the tree to enable you to

just fold this over. Repeat for all 3 trees. Then run some of your super tacky glue down the outside of one tree, use your finger to smooth it out, take another tree and glue them together, repeat adding the 3<sup>rd</sup> tree.

- Then using the 5<sup>th</sup> largest tree cut out 6 of them using the Christmas Green Card and do exactly the same to stick them together, so you end up with 1 large tree and 2 smaller ones.



- Use super tacky glue onto the back of the largest tree, add onto your card, then add the smaller trees either side.
- Finally add Red Pearl Dimension onto the trees, remember it takes about 30 minutes to be touch dry but about 24 hours to be fully dry. Why not make up a batch of the trees and add the pearl dimension onto them, ready for when you need them.



Your card is complete. I hope you have enjoyed these instructions.

Samples:

