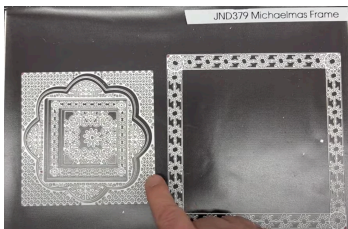


JND379 – Michaelmas Frame – by John Lockwood



Instructions by June Smith

John has created a 'You Tube Video' dated 2nd November 2023, using JND379 Michaelmas Frames, where he demonstrates how to make a card. I would advise that you visit it as well as following these instructions.



June's Tips: This applies to any die, place your pieces onto your cutting plate at an angle, this helps to cut the dies in one pass. Also use your glue eraser to remove any unwanted marks.

Information:

There are 10 dies in the set, most of which cut into your card, if you wanted to make a frame using the dies you would have to use some of the plain cutting dies from your Presscut Square Sets. We will use nearly every die in the set with the exception of the very smallest square with the flower in the idle.

Die 1 – Outside Frame which cuts into the card not out.

Die 2 – Lattice Square which cuts inside die 1.

Die 3.- Cutting die which fits inside die 2.

Die 4 – Floral Cutting die from the inside of the die 3.

Die 5 – Patterned detailed die which fit inside die no 4.

Die 6 – Square Cutting die which fits inside die 5.

Die 7 – Inner Square Frame which fits inside die no 6.

Die 8 – Cutting die which fits inside die no 7.

Die 9 – Square with the inner flower cut out, which fits inside die 8.

Die 10 - Middle Flower which we will not be using today.

Preparation:

Cut a piece of Pacific Blue card to $7\frac{5}{8}$ " x $7\frac{5}{8}$ ". Cut a piece of Coconut White card to $7\frac{1}{2}$ " x $7\frac{1}{2}$ ". Add wet glue onto the back and adhere onto the Pacific Blue, add foam tape to the back and adhere this straight onto your White Card Blank.

Materials

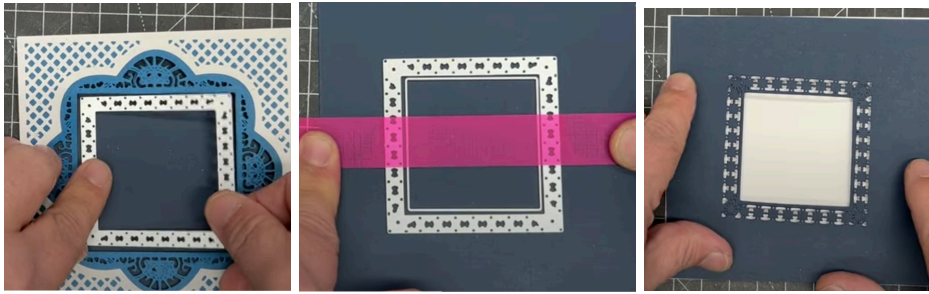
8" x 8" White Top Folding Card Blank
CA Coconut White Card
CA Denim Blue Card
CA Pacific Blue Card
A5 Die Cutting Machine
CA Small White sticky Pearls
2mm Foam Tape
Craft Kit

Method:

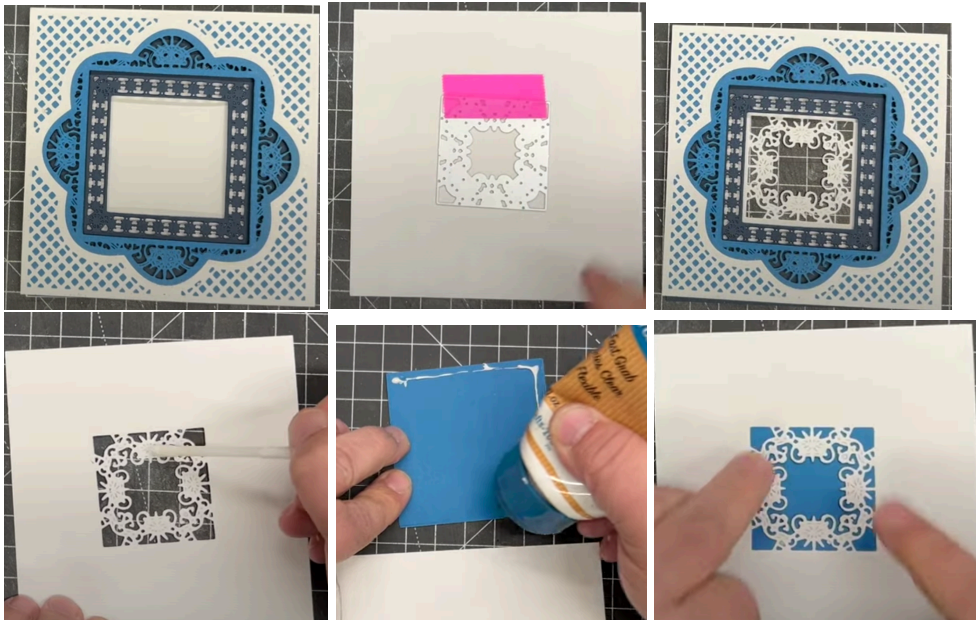
- Cut a piece of Coconut White card to $6\frac{1}{2}$ " x $6\frac{1}{2}$ ", lay die no 1 onto the square, tape it down and run through your die cutting machine. Spray the back and adhere this onto a $6\frac{1}{2}$ " x $6\frac{1}{2}$ " piece of Denim Blue card. Add foam tape onto the back, remove the yellow backing and add onto the front of your prepared card base.
- Cut a piece of Coconut White card to $4\frac{3}{4}$ " x $4\frac{3}{4}$ ", tape down dies 3 & 4 together and run through your die cutting machine. Spray glue the back and adhere this onto a $4\frac{3}{4}$ " x $4\frac{3}{4}$ " piece of Pacific Blue card. Tape down die no 5 & 6 together onto the inside and run through your die cutting machine.



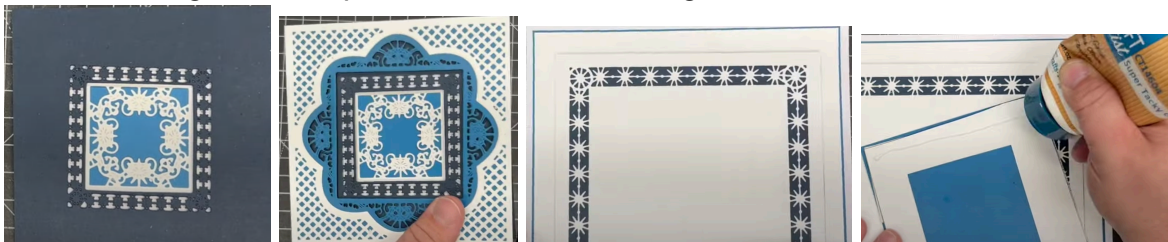
- Cut a piece of the Denim Blue and also another piece of Coconut White card to $4\frac{3}{4}$ " x $4\frac{3}{4}$ ".
- Place the Denim Blue piece behind your main piece, and take die no 7 & 8 together, tape them down, then remove the front frame and run through your die cutting machine.



- If you then position this piece behind the other white square you can see how it really pops, remember we have not stuck anything down yet.
- We then take the detailed die no 9, tape that onto the white background , remove the front pieces and run this through your die cutting machine.
- Turn the cut white piece over and using glue glaze on the inside pattern pieces only. Then cut a small square of the Pacific Blue, add wet glue around the outside and turn this over and place onto the white glue glaze piece.



- We are now going to take the pieces we have made and layer these up as follows: Denim Blue, add foam tape around the back, remove yellow backing and add over the centre of the card. Then foam tape on the back of the Pacific Blue layer, remove the yellow backing and add over the front. Place this over a white piece of card and if you can see any of the denim blue on the edges, use a pair of scissors at an angle and trim these off.



- Bring back in your base card that you prepared earlier, we don't need any more foam tape on the front pieces, just use wet glue onto them and place onto the front of your card.

- To finish off John has pre-made some of the Stitched Flowers using the Pacific Blue and White dome centres, to add onto the front of the card, he is using 3 of the large arranged around the bottom left and 3 of the tiny cup ones on the top right. Then added some of the tiny white pearl onto the 4 ring corners of the outside frame, 4 onto the inner pacific blue frame, then onto the 4 ring corners of the Denim Blue, and finally 4 onto the inner white delicate pattern pieces.



Your creation is now complete. I hope you have enjoyed these instructions.