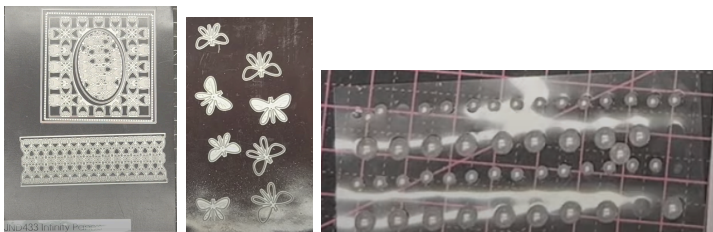


## JND433 – Infinity Panels - by John Lockwood



Instructions by June Smith

John has created a 'You Tube Video' dated 14<sup>th</sup> January 2024, using the new JND433 Infinity Panels Die set, where he demonstrates how to make a stunning card. I would advise that you visit it as well as following these instructions.



### Die Information:

Infinity Panels - so you have the following:

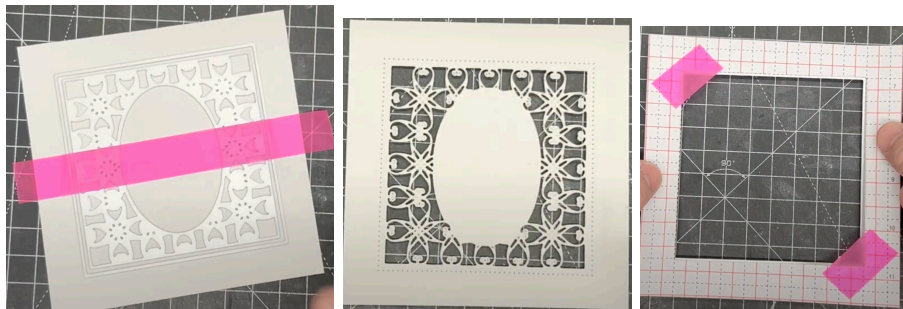
- 1) 4" Plain Square
- 2) 3<sup>3</sup>/<sub>4</sub>" Dotted Square
- 3) 3<sup>1</sup>/<sub>2</sub>" Infinity Square Panel (no outside cutting edge)
- 4) 1<sup>3</sup>/<sub>4</sub>" x 2<sup>5</sup>/<sub>8</sub>" Plain Oval
- 5) 1<sup>1</sup>/<sub>2</sub>" x 2 <sup>7</sup>/<sub>16</sub>" Infinity Oval
- 6) 1<sup>3</sup>/<sub>4</sub>" x 5" Horizontal Infinity Panel

### Materials

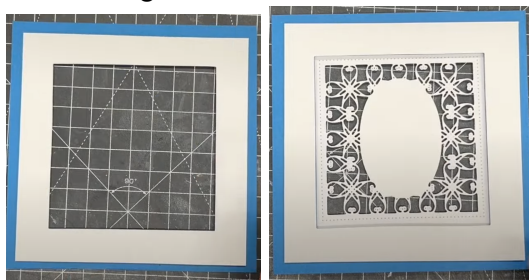
7" x 7" White Top Folding Card Blank  
JND433 Infinity Panels (6)  
JND423 Dragonfly Die Set (8)  
JND442 Modern Sentiments Stamp Set  
Essential Coconut White Card  
Essential Aegean Blue Card  
Essential Denim Blue Card  
A5 Die Cutting Machine  
CA Grid Sheets  
Glue Glaze  
CA Stick on White Pearls in various sizes.  
2mm Foam Tape  
Craft Kit

## Method:

- Cut a piece of white card to 5½" x 5½". Using John's long tape trick pick up from the Infinity Panel die no. 3 - detailed panel and hover over die no. 2, - dotted square, until it is central, then press down on the tape, you then have the 2 handles to pick up the dies together and place them into position onto your white card. Run through your die cutting machine.



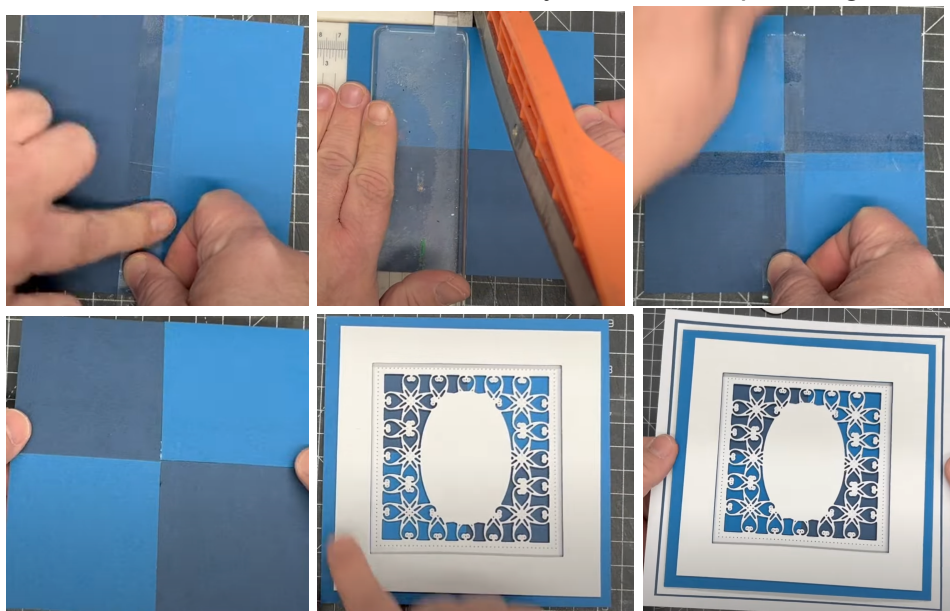
- Cut a piece of white card to 5½" x 5½", then take a template sheet cut to the same size. We then need to add die no 1 from the Infinity panels into the centre of the sheet, tape it down evenly in the middle, secure the template and die onto the white square and run through your die cutting machine, you have then made a frame for your card but also keep the template frame as you can use this time and time again, especially if you laminate it.
- Cut a 6" x 6" piece of Aegean Blue card. Cut another template sheet to 6" x 6" and add die no 1 from the infinity panel evenly into the centre, tape it down and run through your die cutting machine. If you place the white frame over the Aegean Blue frame you have a beautiful even frame to go over the white Infinity panel.
- Add foam tape with a few little dots of wet glue (to stop the static and give some wiggle room), to the back of the white frame and add this onto the Aegean Blue frame, you can see the ¼" frame of blue around the outside. So, what you have done is to use the dies in the set to make every piece of this card. Add foam tape ( and a few dabs of wet glue) onto the back of the Aegean Blue frame and add this over the Infinity Panel.



- We now want to add a little bit of a difference into the background. Cut a piece of the Aegean Blue and Denim Blue card to 5" x 5" and put them into your guillotine so that they are evenly together and cut down at 2½", you want to keep put the left-hand Denim Blue panel and the right-hand Aegean Blue piece and put the side by side on your table, the reason we have done this is so that we get them absolutely even. Turn the 2 pieces over onto the back so that they are still even and take a strip of cheap Sellotape and run it down the

middle – snip away any overhang of Sellotape, using a scalpel or scissors, just mind your fingers. Bring your guillotine back in and turn the square around once then cut it down at 2½”, rotate one side and you have a square of alternate colours all exactly the same size. Turn them over onto the back and repeat adding a strip of Sellotape down the middle, snip off any overhang. You then have a beautiful checker board to go behind out card.

- Bring back in your infinity square and place face down onto your table, add foam tape around the back and a little piece in the centre of the oval, remove the yellow backing and add a few dabs of wet glue to stop the static, then add the checker square into position, it is a lot easier to add the checker square to the main frame, so you get it even.
- Cut and adhere a mat and layer onto your top folding card blank as follows: Aegean Blue to 6<sup>5</sup>/<sub>8</sub>” x 6<sup>5</sup>/<sub>8</sub>” and a Coconut White piece to 6<sup>1</sup>/<sub>2</sub>” x 6<sup>1</sup>/<sub>2</sub>” glue onto the back and adhere onto your 7” x 7” top folding card blank.



- We then have 2 different options to finish off our card. In the set you will get dies 4 and 5 which are the background and patterned ovals. You could have used both of these dies together to cut out of coconut white card, & cut out the plain oval from Aegean Blue, use spray glue or wet glue onto the back of the White Infinity Oval and adhere this onto the Aegean Blue Oval.
- Another choice is to cut the outside oval from Coconut White card and stamp a verse into the centre using a blue ink.

**Information:** The plain oval die is cut out from the same ratios as the Presscut Ovals so if you wanted you could make some more mat and layers for it.

- What John has done for his sample is to cut both of these options out, add foam tape onto the back of the blue and white one and add this across the white background oval using the pattern as a guide. Then add foam tape onto the back of the blue stamped verse and added this long ways onto the front of the card. The verse says: “May this day be the beginning of a beautiful year full of Wonderful Moments”.



- To finish off the card, take your scraps of left-over Aegean & Denim blue card, and cut out 2 complete sets of the 8 dragonflies from both of them, that way any left-over ones that you have can be added to your stash for another card. If you fold the wings up a little bit from the body of each dragonfly they will stand up proud on your card, add glue glaze onto the back of the body and decorate around the card.
- If you look at the body of the dragonfly there is almost a natural space of a circle for the body, this is ideal for adding a dab of glue glaze then some of the small CA White Pearls – then add a few little pearls randomly on the frame and filigree areas.



Your creation is now complete. I hope you have enjoyed these instructions.