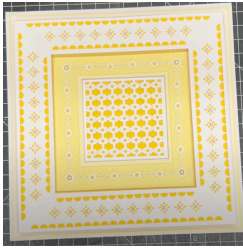
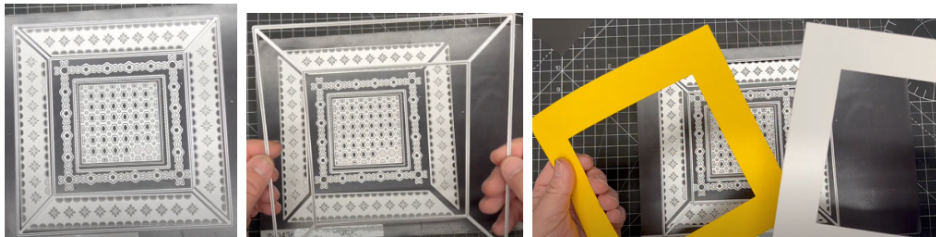


## JND436 – Delicate Frame – Frame It Collection - by John Lockwood



Instructions compiled by June Smith.

John has created a 'You Tube' video using JND436 Delicate Frame, dated 29<sup>th</sup> March 2024, I have incorporated these in this set of Instructions. I would advise that you visit them as well as following these instructions through to the end before commencing the project.



### Information:

You may think that you would spend hours on making this card to capture all the beautiful detail, or it comes as a one-piece die. The set consists of 9 dies.

Die 1 – 7¼” Outside one-piece frame which is an exact 1½” wide frame and a 5” square in the centre, with mitred corners.

Dies 2 – 5 – Pattern Frame Panels

Die 6 – 5” Square panel with the corners overlapping, looks like it has 2 small and 1 larger circle within the pattern.

Die 7 – Scalloped Dotted Edge Die

Die 8 – Plain Cutting Die

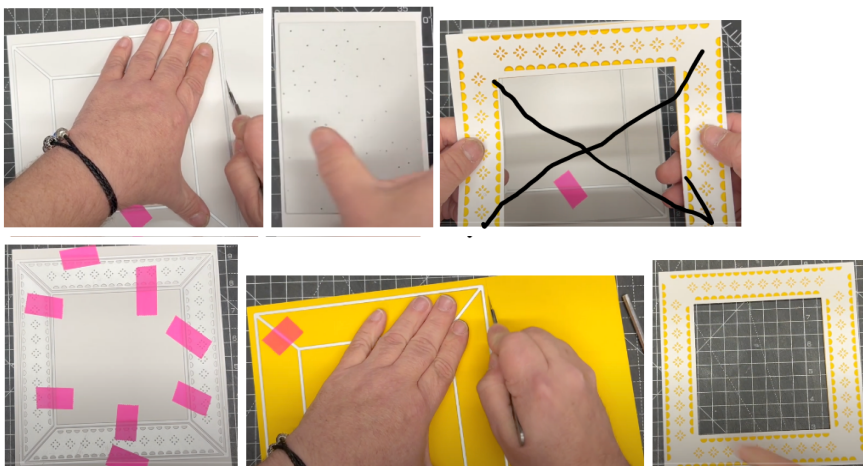
Die 9 – Inside square detailed pattern panel

### Materials:

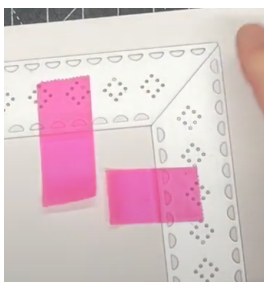
- 8” x 8” Top Folding Card Blank
- CA Essential Coconut White Card
- CA Essential Clotted Cream Card
- CA Essential Sunshine Yellow Card
- CA Essential Spring Yellow Card
- A4 Die Cutting Machine
- Small White Pearls
- Craft kit

## Method:

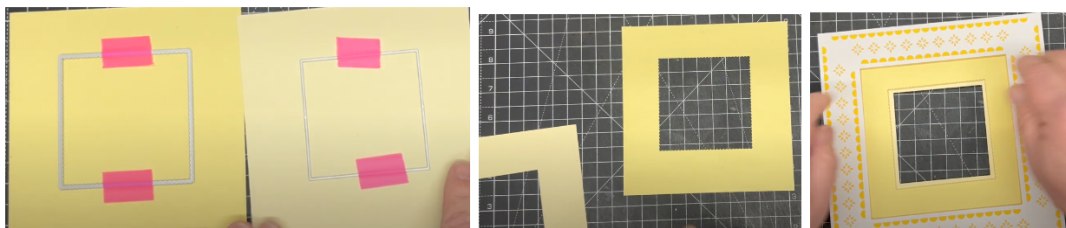
- Take an A4 sheet of Coconut White Card and place die no 1 into the top left-hand corner, tape it down just at the bottom of the frame. John has pressed down the frame and card and using a scalpel he has cut the card down the edge of the die, the piece left over we will use later, the reason the card has been cut down is because you don't need to run excess card through your machine when you don't need to. As an added bonus the offcut has been sized so the JND Flower Plate will fit this piece perfectly. You can also cut out a sentiment from the bottom edge of this piece. You will get a lot of die cutting out of one A4 sheet of card. Don't be tempted to cut the frame on its own, if you look at the photo below (with black cross through it) where the white frame was cut and then the panels cut, you can see that it doesn't line up properly, this is why we run the panels, and the frame dies in one pass. The dies have been carefully heavily manufactured, so they work really well. All you do is to place the frame panels evenly into position and tape them down. It doesn't matter where the panels go because all 4 are identical. Another tip is to always use the Craft Artist pink tape because it can be re-used time and time again, there is a lot of detail and pressure going through your machine and if you use a paper-based tape or similar it is not strong enough to hold all the dies into place or stop them moving, it could also tear your card when you remove it. As the dies have a lot of detail when you run this through your A4 machine it's advisable to use your metal shim. You need to run it through once, turn the frame around 90 degrees and run through again, this is perfectly correct because the rollers of any machine work this way. You will also get a perfectly sized  $4\frac{3}{4}$ " square piece of card from the middle of the frame. Flick the card to remove all the small pieces or use a pokey tool or brush.
- When you have cut this out we can then remove the detail panels and just using the frame itself taped onto a piece of yellow card, again using your scalpel or preferred method, cut off the excess on the right-hand side (remember you can cut the flowers from this panel if you need too).
- You can then see when you have cut this out and glued it behind your cut frame (no matter which way you lay it) how absolutely stunningly beautiful the frame looks.



- Another thing you can do is to take an A4 sheet of Coconut White again and this time tape down the inside pattern panels and the joins matching the corners exactly, then run through your die cutting machine to give you a beautiful white frame piece.



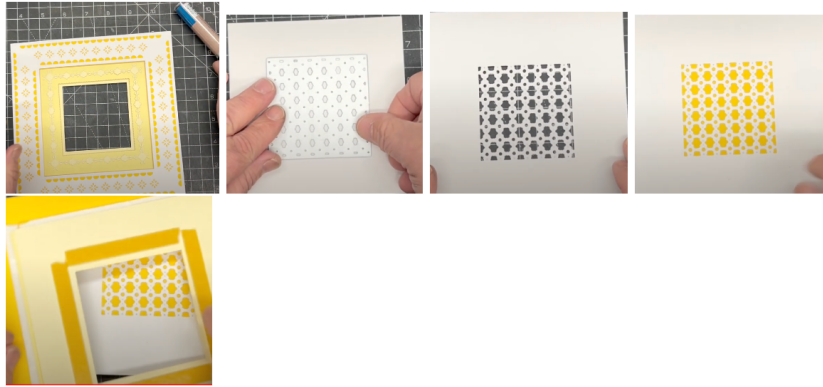
- Add foam tape onto the back of the yellow frame. You will need to cut from the CA Essential Clotted Cream, Sunshine Yellow, and Spring Yellow card to  $5\frac{3}{4}$ " x  $5\frac{3}{4}$ "
- Take the Spring Yellow piece and tape down die no 7 which is a scalloped dotted cutting die into the centre and cut this out. Then take the Clotted Cream piece and tape down die no 8 which is the plain cutting die and cut that out. The next video will show you how to use all the waste pieces.



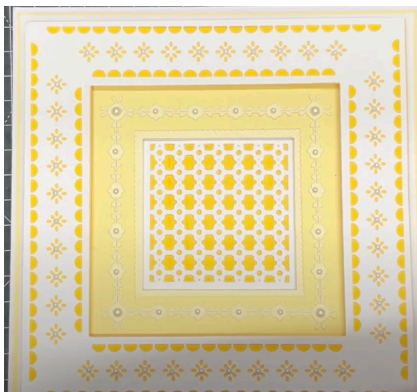
- Foam mount the Spring Yellow frame onto the Clotted Cream frame, don't worry if there is any overhang as this will be hidden. Now remove the foam tape from the main frame and add this over the inside frame pieces.
- We are now going to add another piece of the Clotted Cream card and die no 6 which is the one with the corners overlapping, into the centre, tape it down and cut it out, you get the beautiful frame and also the patterned inside piece, which is going to make a beautiful background for the Spring Yellow inside waste frame piece, we will use this in the next video.



- So, we have this frame, add a dab of glue glaze around circles on the back of the frame and add this onto the inside of your card. We are now going to use the white piece that is left over from the outside frame and tape down the final die No. 9 from the set, into the centre and cut this out. Take a scrap of the Sunshine Yellow card and glue this onto the back of this pattern piece.



- Add foam tape onto the back of your main piece just where the centre square is, remove the yellow backing, add a few dabs of wet glue to stop the static and add this over the last panel to frame it perfectly.
- Bring in your top folding card blank, add a Sunshine Yellow and Coconut White layer onto the front. Add wet glue onto the back of your front piece and adhere this onto the top.
- Finally adding some medium sized white pearls onto the inside panel corners (we used the die no 6 for this) and also the little circles all the way around, finally onto the top main frame into the centre of each of the pattern frame panels.



Your card is then complete, I hope you have enjoyed these instructions.