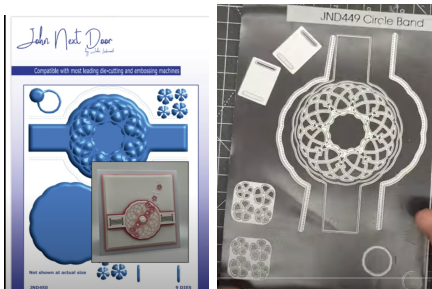


## JND450 – Circle Band - by John Lockwood



Instructions by June Smith

John has created a 'You Tube Video' dated April 2024, using the new JND450 Circle Band Die set, where he demonstrates how to make a beautiful card. I would advise that you visit it as well as following these instructions.



**June's Tips:** This applies to any die, place your pieces onto your cutting plate at an angle, this helps to cut the dies in one pass. Also use your glue eraser to remove any unwanted marks.

### Information:

As always I have numbered the dies from the outside into the middle and then the single dies.

- Die 1 - Stitched Left Panel
- Die 2 - Stitched Right Panel
- Die 3 - Central Belly Band (which cuts off at each end)
- Die 4 - Plain Slightly Scalloped Circle
- Die 5 - Very Decorative Circle Band
- Die 6 - Smaller Decorative Central Circle
- Die 7 – Centre Small Circle similar to design on die 6 (it is not a true circle)
- Dies 8 - 9 Ribbon Thread Strip dies which fit top and bottom with die 3 that cuts both ends to thread your ribbon through.
- Dies 10 - 11 Miniature Blousy Peony Dies (these will complement the Main Peony Die set)

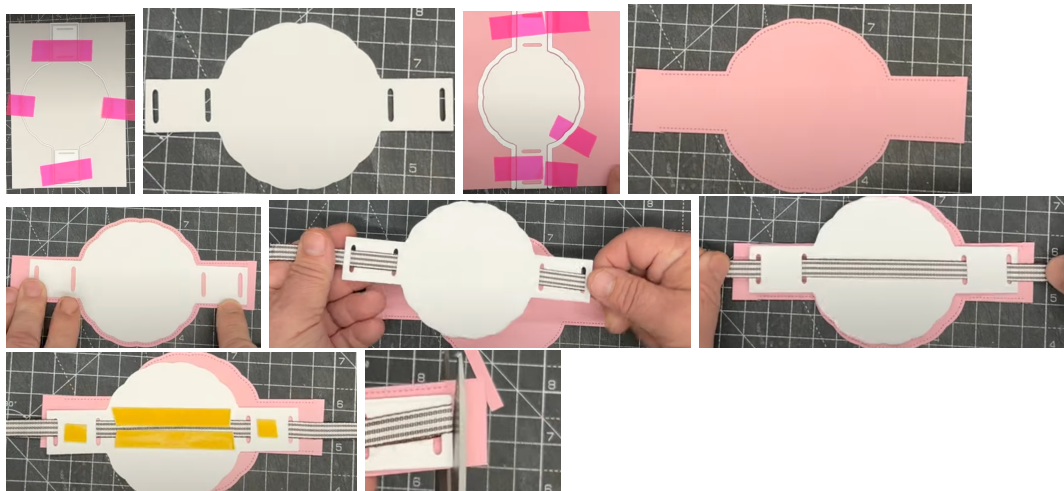
### Materials

7" x 7" White Top Folding Card Blank

JND450 Circle Band (11)  
 Essential Coconut White Card  
 Essential Rose Pink Card  
 Essential Blush Pink Card  
 10mm Grey & White Stripped Ribbon  
 A5 Die Cutting Machine  
 White Pearls various sizes  
 Glue Glaze  
 2mm Foam Tape  
 Craft Kit

**Method:**

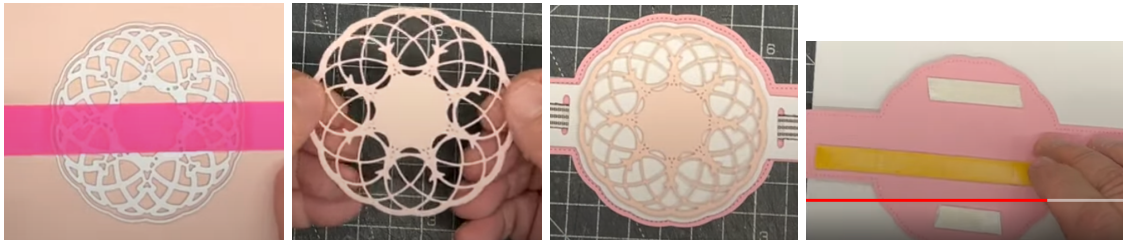
- From a scrap of Coconut White card tape down loosely the main circle belly band and then add dies 8-9 inside the top and bottom, run these through your die cutting machine. You then have this beautiful belly band where you can thread your ribbon through. This has been designed so it will take up to a 15 mm ribbon, although you could use slightly wider to make it bunch up if you wished.
- We now take a piece of the Rose Pink card and place the white belly band onto it and gently tape it down, we can then bring in dies 1 & 2 which are the stitched belly band dies, and tape them down just slightly away from the edge of the belly band. You can then run through your die cutting machine, and it doesn't matter if you leave the white belly band on there. We then have an absolutely spot on layer to fit our white piece.



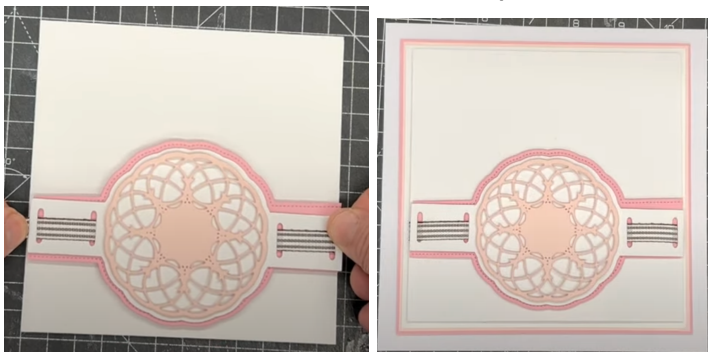
- Before we do anything else we need to bring in our ribbon, John is using a 10mm grey and white striped one, so you thread up, down, up & down threading the ribbon, so you have ribbon pieces at both ends. **Or** you could do it the other way, so the ribbon is seen across the centre circle, it is your choice. However, for this card we will go with the first way. Turn the band over and take some 2mm foam tape and add this on top of the edge of the ribbon top & bottom and 2 small pieces either side so that it secures it in place, remove the yellow covering, turn it over and add onto your pink band. Then take your scissors, hold the ribbon over the middle so it is out of the way and cut off the waste at the end of the pink band NOT the ribbon itself, repeat

at the other end. You can then cut off both ends of the ribbon, leaving about 2" either end.

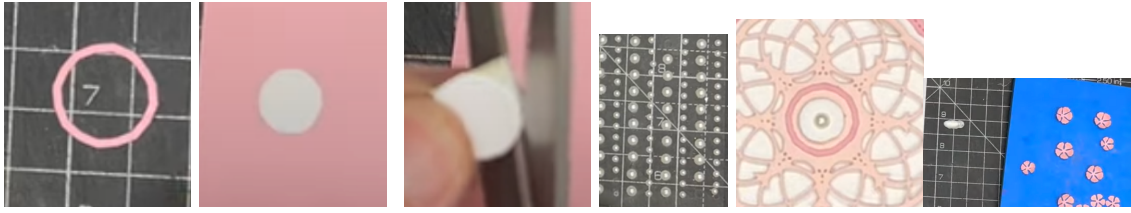
- We can now take a piece of the Blush Pink card and dies 4 & 5 which are the plain slightly scalloped circle & very decorative circle die, tape these onto the card so that the scalloped circle is aligned with the decorative one and die cut them, you then have this beautiful circle panel. Turn this over and add a small piece of foam tape onto the centre and add this onto your belly band matching up the pattern around the circle.



- Cut a piece of Coconut White card to 5 3/4" x 5 3/4", turn it over and add foam tape down all 4 sides, then turn it over without removing the yellow backing yet. Then bring in your belly band and add foam tape onto the back across the middle and 2 smaller piece above and below it, remove the yellow backing, then use the guide lines on your board to get it the band straight (about 1 1/2" up from the bottom) and wrap this around the white card. Keeping it in place, remove the yellow back from the foam tape and secure the ribbon onto the tape, you could also add a bit over the end of the ribbon just to make sure.
- Take your 7" top folding card blank and layer this up with Coconut White layer at 6" x 6", a Blush Pink at 6 1/8" x 6 1/8" , and a piece of Rose at 6 1/4" x 6 1/4". We can then add our main front piece onto the top.



- Using a scrap piece of the Rose Pink (darker one) we need to add die 6 onto it and cut that out. We will only be using the ring so keep the circle for another project. Then from a scrap of the white cut out die 7, the smaller central circle (remember this is not an exact circle, it is designed to match with die 6). We want to add a tiny bit of foam tape onto the back of this circle, use your scissors to cut off any excess poking out, (not easy I know), and add this onto the centre of your card. Then take the Rose Pink circle and add a little bit of glue glaze onto the back and adhere this over the circle. Finally add a small white pearl into the centre.



- From a scrap of the Rose Pink cut both of the small Peony dies, place them onto your moulding mat and use a ball tool to just press in the middle and drawing around in a circle to shape them. There are 2 different sizes of petals within each plate. Add a blob of CA Super Tack Glue onto your board (or you could use an off cut from a silicone mat, when the excess glue has dried it just peels off). Then using a pointed pair of tweezers pick up a flower and dip the back of it into the glue and add this onto your card, then repeat so it is a sweeping pattern, we only need about 7 of them on this card . Add a small white pearl into the centre of each one, and also around the card again in a sort of sweeping design.



Your creation is now complete. I hope you have enjoyed these instructions.