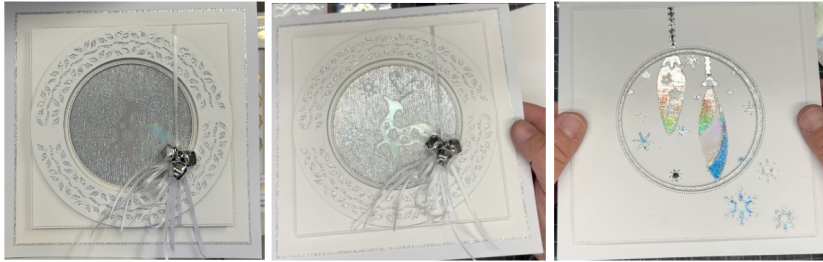


CCL Christmas Stickers- 17 July 2024 by John Lockwood



Instructions compiled by June Smith.

John has created a 'You Tube' video using some of the Christmas release die sets and some Christmas Stickers, dated 17 July 2024, I have incorporated these in this set of Instructions. I would advise that you visit them as well as following these instructions through to the end before commencing the project.



Information:

John always uses Essential Coconut White Card, so for the instructions I have just said white card, if he uses anything different I will put this down.

You can use almost any medium over the peel-off Transfers e.g. gilding flakes glitter, embossing powder, thick glitter, sand, pollen etc. etc.

Materials:

6" x 6" Top Folding White Card Blank.
8" x 8" Top Folding White Card Blank
JND456 Circle Snowflake Frame 6x6 Maker (10)
JND473 Holly Circle Frame It (5)
Essential Coconut White Card
CA Silver Waterfall Glitter Card
Transfer Stickers
Kaleido Foil – Silver Holographic, Mother of Pearl, and Plain Silver
Silvery White 3mm Thin Ribbon
CA Silver Bells
Die Cutting Machine
Craft Kit

Method:

- Cut the Circle Snowflake Frame die out of white card. Then cut a piece of Silver Waterfall card to 6" x 6", and position the Circle Snowflake die over the

top, you can then add the plain circle die from the set into the middle, tape this circle die down firmly, remove the outside frame die and run through your die cutting machine. If you put both pieces together you should end up with the Silver Glitter Waterfall card just showing around the middle and just the white around the outside.

- Cut a piece of white card to just over 6" square, then from the Holly Circle Frame It set tape down the circle frame and both holly insert dies together and run this through your die cutting machine, always check the back before removing the dies so you can see that all the bits have cut out.
- Then just using the circle frame itself cut out of Waterfall Glitter Card. Using glue glaze or spray glue on the back of the white circle and add this onto the Waterfall Glitter circle.
- Then cut a white piece of card to $5\frac{3}{4}" \times 5\frac{3}{4}"$ and place just the circle frame you have just made over the top, so it is central, take a pencil and draw around the inside of the circle. What you have done is to prepare the circle area, so you know where to fill the design with the transfers. Tape the pencil circle piece down across the top and bottom, we are doing this because we don't want the card to lift up when you put the stickers on.



- What we are going to do next is to add the stickers into the circle that you want. Remove the cover off the stickers and using your pokey tool to help you pick up the bauble, this comes in 3 parts and is very hard to see clear on white but there are 2 pieces of the bauble on there at the moment, John is removing one of them for a moment.



- Then he has picked up a complete bauble and placed that to the left of the first one, then using a pokey tool remove the 3 stars from the centre of the bauble and put them back onto the transfer sheet.
- Take a piece of the Kaleido Holographic foil and press this down over the top using your finger to go all over the transfer area, when you remove it you can see the foil has filled in the bauble. Then again using your pokey tool pick up one of the original bauble that we put back on the sheet and add this just around the bottom corner of the half-moon shape blue bauble bit, you can see this in the photo below. Then put back the stars that you took out of the first bauble.



- This time take some of the Mother of Pearl Kaleido foil and add this over the stars and the other bauble, rub with your finger, then when you remove the foil you can see how this is looking. Add the bottom of the first bauble into position and this time rub the Holographic piece over it. Then add the two tops of the baubles into place and rub over using a Silver foil piece.
- Then pick up a small chain strip and add that above the left bauble, and a longer chain strip onto the right bauble and go over with the Silver again. Look what happens when you hold the frame over it.



- Add a few of the stars etc, randomly around the baubles and rub over a bit if the Mother of Pearl foil over them. Put the cover back over the transfers, you may not be able to see on the photo, but John has used 2½ bits, so this will last a long time.



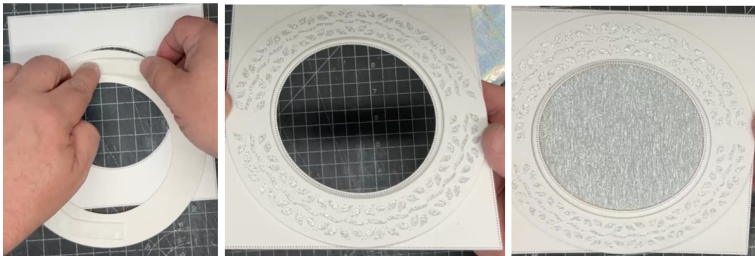
- Now bring in the sheet that has the Deer on it and take some of the stars from there and add inside the circle, then go over with Mother of Pearl and Silver.
- Then bring in your Circle frame and add this over the top, if there is any card hanging over, use your scissors at an angle to undercut them.
- Then there is still a bit of the chain left over so add this onto the outside of the ring as if the bauble is hanging from it, rub over with the Silver foil. Then from the Deer peel offs add 3 larger stars onto the bottom left corner and add Holographic over 2 of them and Silver over the remaining one.

- Add onto a 6" x 6" top folding white card blank, and you have finished the first card.



Card 2:

- We still have the circle and square piece from earlier, so turn the circle over and add foam tape around it, remember if you remove the covering then the foam will go around in a circle, but if you leave it on you will find that it creases and folds over, which would ruin your work.
- Then add foam tape onto the back of the square, remove the backing and add this onto a piece of Silver Waterfall card cut to 6" x 6"



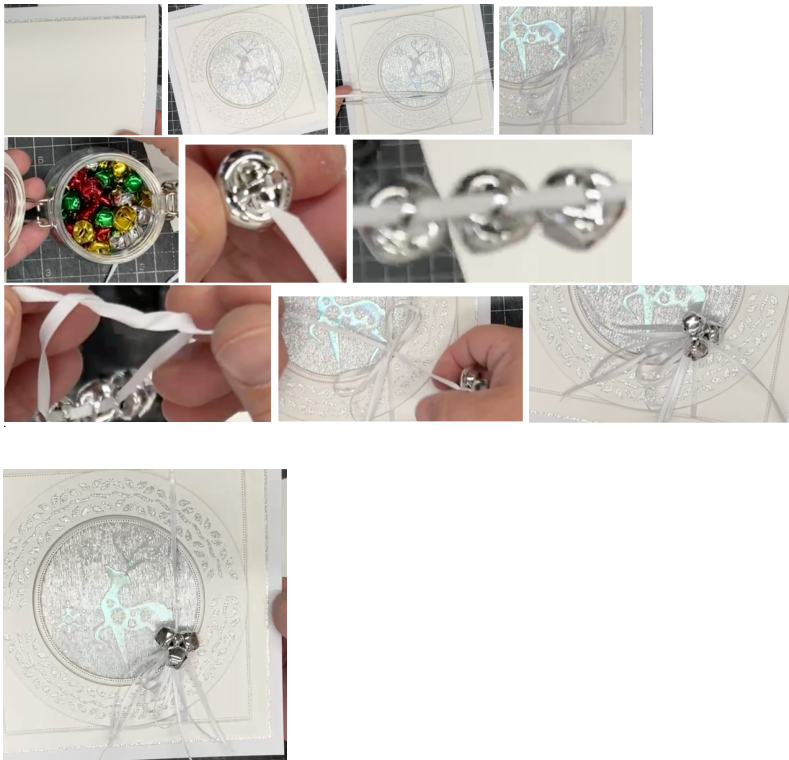
- Take one of the Stags from the peel-off sheet and add this into the middle of the Silver Waterfall card, also add his antlers and a couple of stars as well. You can hardly see this so what we do is to cut off a piece from the Mother of Pearl foil and add over and rub the stickers with your finger, then when you remove the foil this is what you get, isn't it beautiful.



- If we measure the piece we know it is 6" square, and we want to make a really nice simple mat and layer so add 1" on and cut a piece of white card to 7" x 7". Then take the Waterfall Silver Glitter card and cut that to 7 1/8" x 7 1/8", if you were doing this at home you could have cut out the circle die from the middle of the Waterfall Silver Glitter card, but for this sample John is using it as it is. Add wet glue to the back of the white card and add over the Silver Waterfall Glitter card, this give a very fine 1/16" border all the way around.
- Bring in your 8" x 8" top folding card blank and add wet glue onto the layers and adhere onto the card blank.
- We now take some of the 3mm Silvery White ribbon and wrap it over onto the back of your main piece, use normal Sellotape to stick this down, then making sure it is straight pull and wrap around to the back, then again add a piece of

Sellotape onto it. Normally we would just add glue to it but as we have the sticky tape on the back we will add some 2mm foam tape on the back, then mount this onto the card base.

- Then take some more ribbon and double it up, then thread the loop through the first ribbon and knot once, then from both of the ends tie a bow, then cut the long loop at the top and the bottom. Then using another bit of ribbon cut the end off at a point and thread through 3 of the silver bells, then tie a loop and tie a loop again and pull this creates a knot that doesn't come undone. Then take one end and thread it underneath the bow and tie a knot the same way, so you go round and then round again, then pull, it means that you don't have to secure it because it will stay into position and the knots will not undo. Use your scissors to snip off the ends at a point.



Add a couple of strips of power tape onto a piece of card, remove the blue backing and add Silver Foil onto it, so this will work as well. If you did it with wet glue and spread it over it wouldn't cover evenly it would be patchy and tacky, so wouldn't advise that.



John is back on Create & Craft on Monday 29th July, using tools – free style trimmer!!

I hope you have enjoyed these instructions.