

CCL Hopkins Notched Frame – 5 March 2025- by John Lockwood



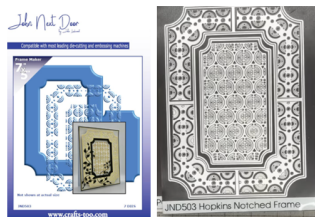
Instructions compiled by June Smith.

On Craft Cave Live (CCL) this week John is using JND503 Hopkins Notched Frame die set, and JND504 Charlies Notched Frame together, dated 5th March 2025, I have incorporated these in this set of Instructions. I would advise that you visit them as well as following these instructions through to the end before commencing the project. As you can see below I have listed out each of the dies in both sets as it is easier to say the die number rather than typing it all out each time. You can also watch this on the 'You Tube' channel now which is so useful. This is not a selling channel; it is a friendly facebook group who meet up once a week on a Wednesday evening at 6pm to share demo's by John and have a laugh and a wonderful time.

June's Tips: This applies to any die, place your pieces onto your cutting plate at an angle, this helps to cut the dies in one pass. Also use your glue eraser to remove any unwanted marks.

Information:

The 2 die set we are using are listed below.



JND503 Hopkins Notched 7" x 5" FrameMaker

Die 1 – Main FrameMaker Notched Corner 7" x 5" (It is a notched corner going into a notched corner giving you a 1" frame all the way round)

Die 2 – 5 are 4 decorative insert panels that fit inside the main frame.

Die 6 – Central notched corner die

Die 7 – Solid Decorative inside panel which complement the 4 corner panel dies which have a larger pattern in them



JND504 Charles Notched Frame 4" x 6" version

Die 1 – Main FrameMaker Notched Corner (It is a notched corner going into a notched corner giving you a $\frac{3}{4}$ " frame all the way round)

Die 2 – 5 are 4 decorative panels that fit inside the main frame.

Die 6 – Central sort of Tag with a looped Infinity design which matches with the Infinity dies that we did

Die 7 – Plain rounded corner die

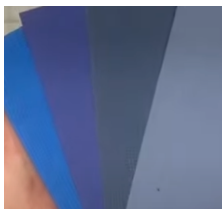
Die 8 – is a smaller version of die 6

Die 9 – A central Infinity panel, which would patinate all the way through.

Workshop Information:

The next on line Zoom workshop is on the 29th of March at 2pm – 4pm or 5pm if we over run and John will show us a sneak peek on next week's Craft Cave Live. It is available to book now from The Art of Craft website, so nip on over now to book your place. We always have such great fun on these Zoom classes, lots of interaction with everyone, with Sam helping and also Penny keeping an eye for any questions etc. oh and yes you will be able to down load the written instructions by myself which will be sent out after the zoom has finished to your email inbox.

These are the swatches from the Canvas Card Deep Blue colours.



Materials:

JND503 Hopkins Notched Frame (7)

JND504 Charles Notched Frame (9)

JND498 Shirley Flower die plate

JND495 Twisted Vines (4)

PCD223 Notched Rectangles Die set (20)

CA Canvas Card Deep Blue colours

JND508 – Handy Sentiment Stamps (17)

Versafine Clair Blue Ink Pad

CT9023 Precision Press Stamp Block

Scoreboard

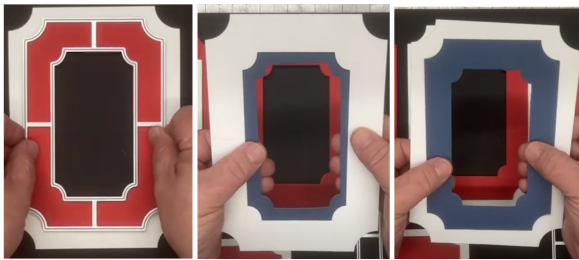
Craft Kit

Method:

- John is showing us each of the die sets and the different variations that can be achieved when combining the die cuts in different ways. In each set you have a different Frame-Maker die. If we cut out the main frame from JND503 from Coconut White card this is what you get. We can then die cut the panels from different colour card and layer them up to make the card below. This is the basis of the Frame Maker dies. The JND503 Hopkins Notched Frame is larger at 7" x 5", which will fit perfectly onto a 5" x 7" card blank.



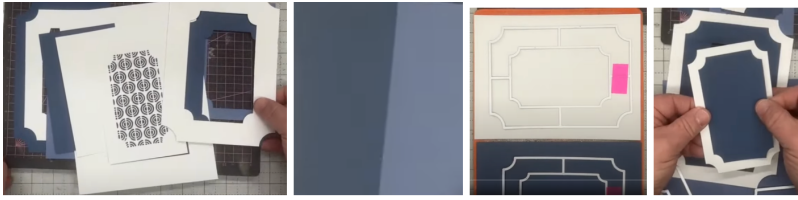
- The JND504 frame can be combined with the JND503 to create an additional double frame with a lovely 1/2" border around it. It can also be used the other way around as you can see in the blue and white frame below which is what we will be using tonight. By combining the different dies in both sets there are so many permutations that can be achieved.



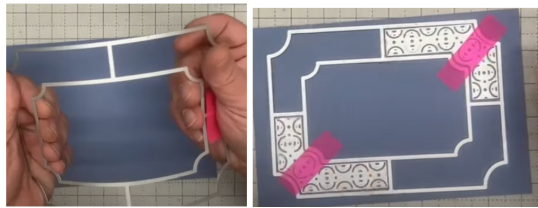
- When it comes to the Hopkins Notched frame set this is the board that John has used on the shows to show how they can be combined. Also, you can play around with the inserts creating a completely different look. Look at the Lilac card below, it really is elegance itself, love this one. Also done in a blue variation by Lesley Lakin, brilliant, love this one as well.



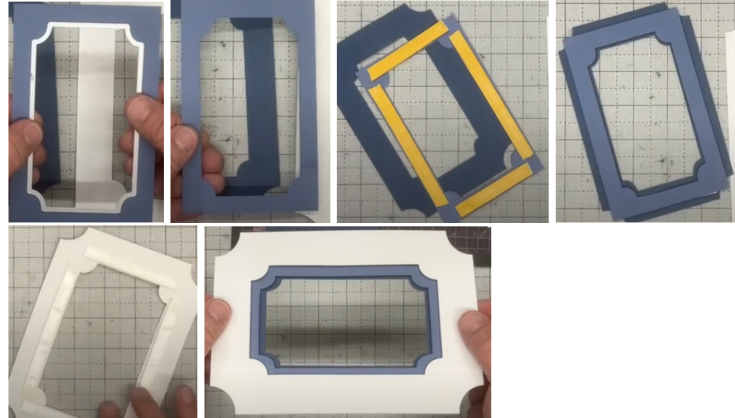
- We are going to do a version of Lesley's card; John has already pre-cut a lot of the pieces out to save time.
- Take a piece of Coconut White card and die no 1 from the JND503 Hopkins frame set, tape it down and run through your die cutting machine. Then take die no 1 from the JND504 Charlie Notched Frame, tape that down and cut this out. If you have an A4 die cutting machine you can get both pieces onto it and run them through together. When cut you get the 2 die cuts which make a perfect frame, but also the fall out middle pieces for a smaller matt and layer which is the start of another card.



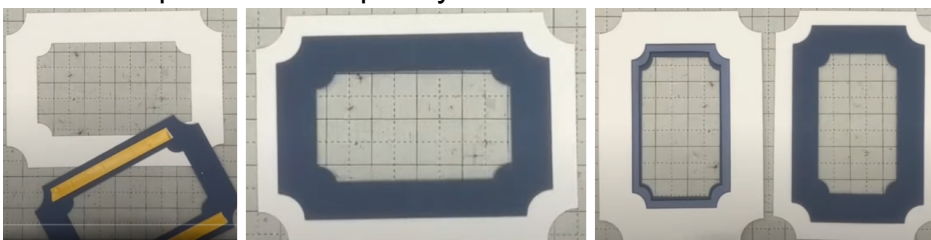
- If you want to cut it with all the pattern, you take a piece of card and add the frame maker die onto it, if you have used the dies quite a few times you may have noticed that they are slightly curved, don't worry about this because you can bend it back into shape because the die is one solid piece. All we do then is to add 2 of the Hopkins corner dies and tape them down in opposite corners, then die run through your die cutting machine.



- Take a contrasting blue card and cut to 3½" x 5½", then tape down die no. 6 and run that through your die cutting machine. What this means is that you can get a really nice 3 colour frame for your card. So, turn this lighter blue die cut over and add some 2mm foam tape around the outside, remove the yellow backing and adhere onto the darker blue frame.
- Then turn the white frame over and add foam tape near to the inside of the frame, remove the yellow backing and add onto your frames.



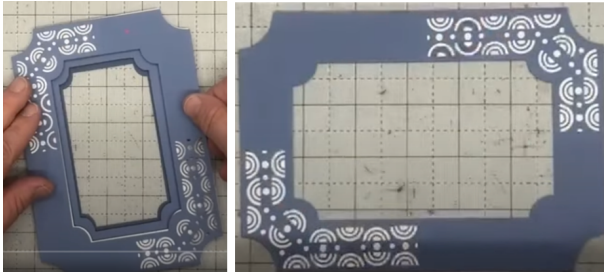
- What we can also do is to alternate the colours, so cutting out the White Frame and the darker blue frame, add foam tape onto the back of the blue and adhere onto the white frame. By mixing the colours and frames you have an option of 2 completely different frames.



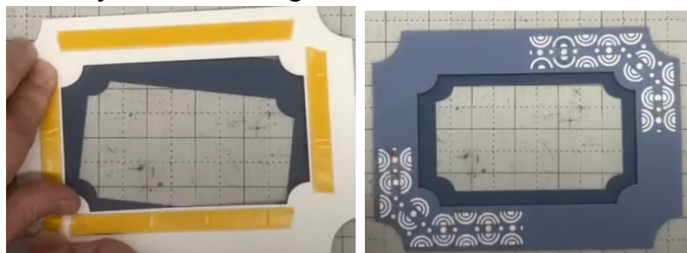
- Look what we get when we add the die cut with just the 2 decorative corner panels showing, really stunning, I like this. We need another white frame to

go behind this so again take the Hopkins die no 1, tape it down on white card and run through your die cutting machine, this is why the Frame Maker dies have been so useful especially to making a card so quickly. **Hot News:** John has been working on 13 different packaging's for new things coming out later in the year, oh this is exciting isn't it.

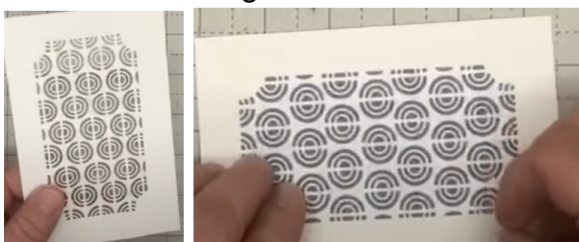
- Take the pattern frame piece and add spray glue onto the back and add this onto your white frame. The JND503 Hopkins Notched Frame is available now from The Art of Craft and it will be available to purchase with a special offer as well from 'Live Shopping' on Friday.



- We want a darker piece of card in the middle, so take your darker blue card and tape down die no 1 from JND504 Charlie's Notched Frame and run through your die cutting machine. Turn the main frame over and add 2mm foam tape onto the back so it is nice and near to the inside edge, remove the yellow backing and adhere over the darker blue frame.

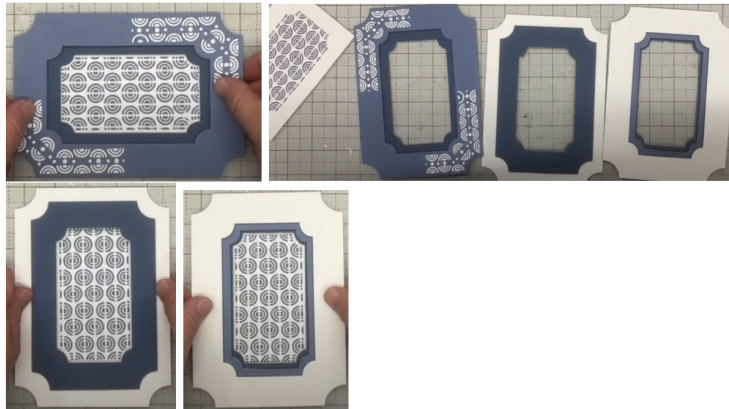


- Now we want to do the centre, cut a piece of white card to 3½" x 5½" add the solid die no 7 from JND503 and tape this down into the centre of the card, then run through your die cutting machine. If you find that not all the intricate pieces have come out then just add another piece of card over the die and run through your die cutting machine again, another thing to do is to rub a tumble dryer sheet over the die what this does is to remove any finger marks etc from the cutting area of the die, I use this all the time. John has already cut one out earlier, he has sprayed the back of this and added the light blue waste from cutting out the frame die onto it.



- Turn your main frame piece over and add foam tape around the dark blue frame and adhere over the decorative middle piece. You should have 2 more frames partly done, so add foam tape onto the back of both of them. Then

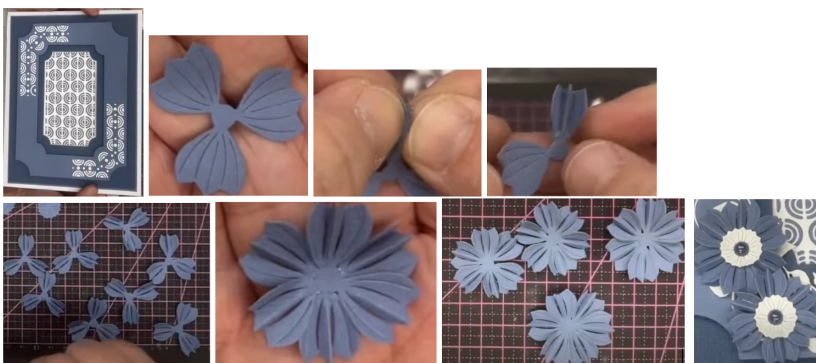
place behind each of the frames to see which one you prefer. John prefers the first one with the decorative corner frames on it, and I agree with him.



- Make your own white card blank which is 6¼" across x 8¼" depth, you can get this out of an A3 card as well as all the white die cuts.



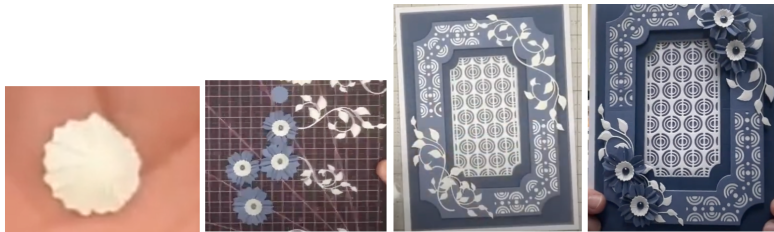
- We will go with the decorative 3rd one, so remove the yellow backing from the foam tape on the frame and adhere over the decorative panel. We are then going to add this onto the card blank, but we don't need any more foam tape, so just use your wet glue onto the back and adhere onto the card base. John has decided that this will be a top folding card blank. We now need some flowers and foliage. So cut out a set of the Shirley Flower plate using the blue and white card, also from white card cut out the Twisted Vines 4 dies.
- You can see on the close up of the Shirley flower that John is holding that the cuts are already in the die itself, so it is very easy to shape them. What John is doing is taking the largest petal and fold on the middle cut line back and then fold the outside wings forward. Repeat this for all the other petals. Then take the 2 largest petals and add glue glaze into the middle of one of them and offset the other on top. Repeat this for all of the flowers, you should have 4 in total.



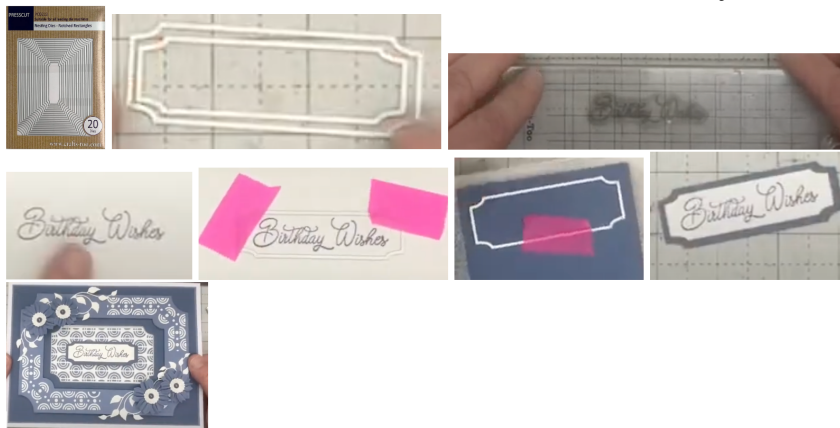
- We now want to add the middle white centres onto the blue flowers, so bring in your CA Flower Moulding mat and ball tool. The centres also have cut lines on them, so it is easy to just press down into the middle and go around in a

circle a few times to mould them. You get a really nice dome shape. Add glue glaze into the centre of each flower and using your CA pick up tool to add the white centres into each of them. You could add white pearls and use an alcohol pen to colour them black in the centre or like John just use some of Sam's black pearls, shush don't let on will you.

- Take the leaves and on the back add glue glaze to the leaves and a dab on the stem, add this onto the plain part of the frame, repeat using the short leaves so that it goes in the opposite way, you can hardly see where they overlap each other. Repeat this in the opposite corner.
- We then need to add our flowers and the best thing to use is the CA Glue Gel, so squeeze a little dab of it out and use a cocktail stick of similar to pick up the gel, you can then pick up a flower so the cocktail stick acts as a handle so you can place this onto the frame. We need 2 at the top right and 2 on the bottom right of the vines.

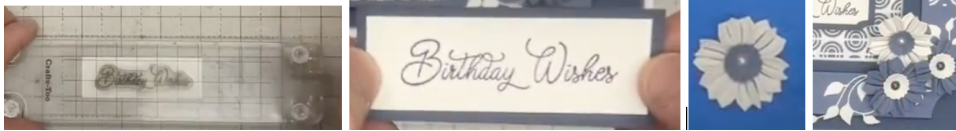


- We now want to add a sentiment, we want to continue in the notched frame format, so take the 2 smallest dies (no: 19 and 20) in the matching Notched Rectangles die set, a scrap of white card also your Precision Press Stamp Block, we want to add the 'Birthday Wishes' stamp and normally we would cut the frame and then add the stamp but as the frames are so small we will do this the opposite way around, so take your stamp and add onto the lines of your mat to get it straight then use your Precision Press to pick up the stamp, ink it up with a blue ink pad, and add onto the white card. You can then take your die, place this over the stamped image, tape it down with your repositionable tape and run through your die cutting machine. We want a background for the stamped image so using a scrap of the darker blue cut out the other larger die. Add wet glue to the back of the white and adhere onto the blue then add a strip of foam tape to the back, remove the yellow backing and add the sentiment across the middle of your card.



- If you don't have the notched rectangle dies bring in your Crafts Too Baby Guillotine and a scrap of Coconut white card and cut this down to 1" x 3" long,

then take a scrape of the blue card and cut that to 1¼" x 3¼". You can then bring in the stamp and ink it up with Versafine Clair and use your mat to line up the white strip and stamp the sentiment onto it, you may have to add a piece of card over the ink and press down as the ink may still be wet. Add wet glue to the back of the white piece and add onto the blue.



- We still have the white flowers with the blue centres, so John is folding the petals over as before and adding the blue centres to a moulding mat, use a ball tool to shape the dome. We only want 1 flower for this, but you could easily construct all the others and keep in a box for another project. John has then placed the white flower behind the bottom blue flowers. It is not working for me, or John so he has put it to one side for another project.



Your card is now complete, I hope you have enjoyed these instructions.