

JND498 Shirley Flower – Inking through the Die Plate - by John Lockwood



Instructions by June Smith

John has created a 'You Tube Video' dated 6th February 2025, where he demonstrates using the new JND498 Shirley Flowers to ink through the die plate, if you look at the back of the die you will see that some of the petals have been left open so you can colour through the die. He has already pre-made a base card using the JND504 – Charlies Notched Frame dies, there is a separate video and set of instructions how to use these. I would advise that you visit it as well as following these instructions.

Information:



JND504 Charlies Notched Frame

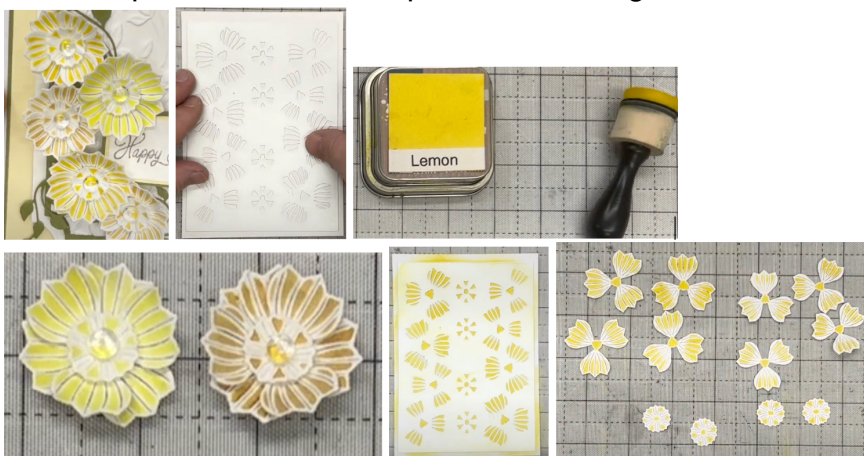
- Die 1 – Main FrameMaker Notched Corner (It is a notched corner going into a notched corner giving you a $\frac{3}{4}$ " frame all the way round)
- Die 2 – 5 are 4 decorative panels that fit inside the main frame.
- Die 6 – Central sort of Tag with a looped Infinity design which matches with the Infinity dies that we did
- Die 7 – Plain rounded corner die
- Die 8 – is a smaller version of die 6
- Die 9 – A central Infinity panel, which would patinate all the way through.

Materials

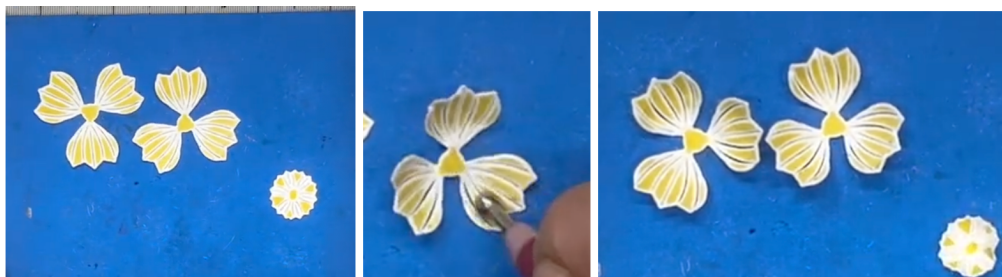
White Top Folding Base Card
JND504 – Charlies Noted Frame
JND508 – Handy Sentiment Stamps using 'Happy Birthday'
Essential Coconut White Card
Essential Clotted Cream Card
Gold Fusion – Lemon - Ink Pad and dauber
Aurora Fusion - Mimosa Yellow
CA Moulding Mat and Ball Tool
Versafine Smokey Grey Ink Pad
Die Cutting Machine
CA Glue Gel & Cocktail Stick
CA Glue Glaze
Clear Dew Drops
2mm Foam Tape
Craft Kit

Method:

- Cut a piece of Coconut White card cut to 5 $\frac{3}{4}$ " x 4 $\frac{1}{8}$ " (you can get 4 of these from an A4 piece of card). Add the die face down onto the white card, tape it down and run through your die cutting machine. Don't remove the card from the die as we are going to do some inking. Below you will see 2 flowers that John has used already done, one using the Sunfruit Fusion and the other is done with the Aurora Mimosa Yellow
- Use your dauber which you keep for the yellow and pick up some of the ink, then just go around in a circular motion all over the back of the die. To clean the die, you can use a cloth with hand sanitizer to remove all the yellow or take another piece of white card and add that onto the back of the die and run that through your die cutting machine again and that will give you a negative imprint which makes quite a nice design.



- Bring in your CA Moulding mat and ball tool and place 2 of the flowers and a centre onto it. Take the large end of the ball tool and because the petals already have slit lines in them it is very easy to just go up and down to mould each one. For the centres you just go around in a circle then turn the ball tool over to use the smaller size and push in the middle to cup it.



- Add a dab of glue glaze into the middle of one petals and offset the other onto it. Again, add another little dab of glue glaze and dab that into the centre, then using your 4-1 pickup tool to pick the middle cupped piece and place into the centre. Then finally add glue gel into the centre and add a clear Dew Drop into the centre. You can see the 3 different colours of flowers below.



- John has already created his base card using the centre pieces cut from JND504-Charlie Notched Frame, with white card, this has been embossed, the green is from the separate die that comes from JND503 which is the larger frame, and the white is the waste from cutting the larger frame. The layers are from Essential Clotted Cream card and Moss Green. See the photo below. He has also cut a set of the Vine Leaves cut from the Spring Green Canvas Card; you may have some of these left over from the previous instructions. We only need one of the large and 2 of the small.



- Then add your glue glaze onto the back of all 3 of the leaves and add thee onto the front of your card.
- John has already pre-stamped 'Happy Birthday' onto a piece of the white card using Versafine Smokey Grey Ink, then cut a layer the Clotted Cream and another of the Moss Green, I think the green is about 2½" x 1¼". Add a piece of foam tape onto the back, remove the yellow backing and add onto the middle right side of your card.



- To finish off all we do is to use our 3D Glue Gel onto a cocktail stick, which becomes a handle to pick up a flower and move around the card until you are in the correct position and then press down and remove the stick, adding our flowers onto the front of the card.



Your creation is now complete. I hope you have enjoyed these instructions.