

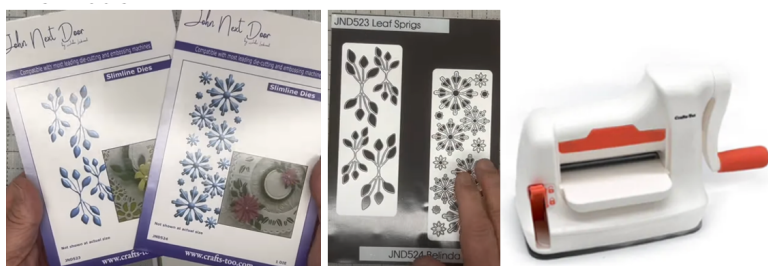
JND523 – Leaf Sprigs & JND524 Belinda Flower – Floral Confetti by John Lockwood



Instructions by June Smith

John has created a 'You Tube Video' dated 2 May 2025, using the new JND523 Leaf Sprigs & JND524 Belinda Flower, these are the new Slimline Dies, which fit perfectly into the Crafts Too – Mini Die Cutting Machine. John demonstrates how to make a card. I would advise that you visit it as well as following these instructions.

Information:



Materials

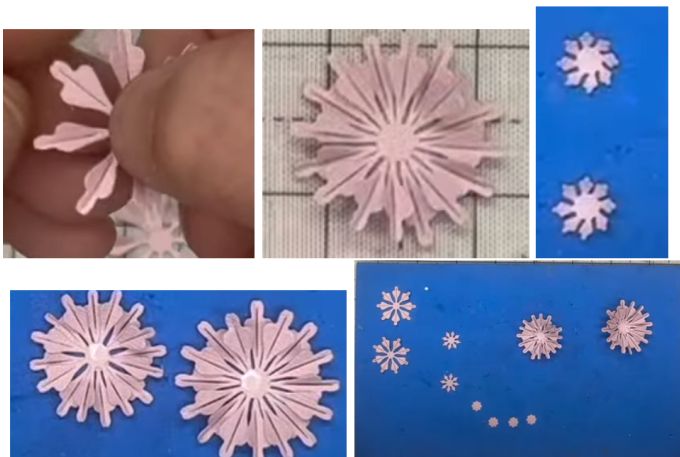
3½" x 7½" Mini Top Folding Card Blank
JND523 Leaf Sprigs Slimline Dies
JND524 Belinda Flower Slimline Dies
Essential Coconut White Card
Canvas Card – Lilac, Pink, & Soft & Deep Green.
A Stamped Verse has been added to the White Layer
Crafts Too – Mini Die Cutting Machine
Clear Dew Drops
Glue Glaze
CA Glue Gel & a Cocktail Stick
2mm Foam Tape
Craft Kit

Method:

- Cut a piece of the lilac pink card to 2½" x 5⅞" and lay this onto your multi-media mat, then place the Belinda Flower die evenly onto it and tape it down, you can get 8 of these pieces from an A4 card. Run this through your Mini Die Cutting Machine. Lay the flowers in size order onto your mat, you get 2 large, 2 medium, 2 small, 4 mini, and 4 tiny weeny ones. The remaining works well as a background or as a stencil. You can see it more clearly if you add a piece of moss green card behind it, which you can use on another card.



- Take one of the larger flowers and hold the middle in one hand and with the other pinch upwards each of the petals, you can see that there is a cut line already designed in the die. You can use these singularly or mount them up together in the same or different shades. Add a dab of glue glaze into the centre of a large one and offset the other one onto it. Continue making these up in the same way. You could mix the colours and sizes up to make so many different looks to each flower. Then for the centre ones we have an option, so bring you your Craft Too blue moulding mat and ball tool. Use your 4 in 1 tool the white pick-up part, to place 2 of the smallest petals on it, then take the small ball tool which comes in the set and just scribble in the middle of each of them to shape them. Then bring back in your 2 flowers and add glue glaze into the centre, then using the pick-up tool to place a centre onto each one. Add the remaining flowers onto your mat and pop them to one side for now.



- John has brought in some that he has already made previously where he has mixed the colours using the Lavender, Lilac and Mulberry Deep Purple to make up the flowers. In the centre he has added a dab of glue glaze into the centre of each flower and added a clear dew drop into the centre.



- We now need to make some of the leaves up, Take a piece of the darker green canvas card cut to 2½" x 5⅞", tape down the Leaf Sprigs die onto it and using the black plate and B plate run it through your mini die cutting machine, this will give you a left and right large leaf and a left and right small leaf, which is perfect for placing your flowers onto. Then repeat this with a lighter green card.



- John has already created his 3½" x 7½" top folding base card and added a layer of Mulberry, Light Green and Coconut White card, which he has also stamped a verse into the middle it and layered these up.
- Take one of the bigger light green leaf sprigs and on the reverse add a dab of glue glaze onto each leaf and add this on the left side just below the verse. Then repeat this using the darker smaller green leaf sprig and add across the middle of the green sprig. This is then absolutely perfect for adding one of your flowers onto. The flowers and leaves have been designed to go around a wreath but also they are fantastic if you are not sure how to put your flower on with leaves, then it has been sized to go with most of John's flowers I mind.



- Then using the Craft Artist Glue Gel onto a cocktail stick to use as a handle to add your flowers over the leaves. We also have some of the little tiny flowers

which we can add using glue glaze randomly onto your card. Finally add a dab of glue glaze into the centre of the small flowers and add a small white pearl onto 4 of the little flowers and also add a few small white pearls randomly onto the card.



Your creation is now complete. I hope you have enjoyed these instructions.