

JND519 Snow Crystal Flowers & Snowflake Frame Card – 11 July 2025 - by John Lockwood



Instructions by June Smith

John has created a 'You Tube Video' dated 11th July 2025, using the new JND519 Twisting Snowflake & Flowers die set, where he demonstrates how to make the above card, we will be using parts of the next release coming very soon. I would advise that you visit it as well as following these instructions.

Information:



JND536 Twisting Snowflake Die Set

Die 1: Outside Cutting Square

Die 2: Snowflake FrameMaker

Die 3: Inside Cutting Square

Die 4: Square cutting die with outline decorative corners built into it

Die 5: Narrow Frame matching the outside shape of the Snowflake

Die 6: Wider Frame matching the outside shape of the Snowflake

Die 7: Snowflake die

Information: Die no 2 has been designed to work with the 5" FrameMaker and also the new FrameMaker Die in this collection, coming very soon.



JND537 Snow Crystal Flower Die Set

Die 1: Outside Stitched Cutting Square Frame incorporating Stitched Circle in the centre.

Die 2 - 5: Snowflake Corner Panels

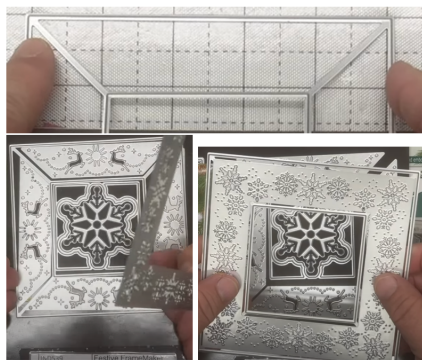
Die 6: Inside Stitched Circle

Die 7: Square cutting die with outline decorative corners built into it

Die 8: Narrow Frame matching the outside shape of the Snowflake

Die 9: Snow Crystal Flower framed in a cutting circle

There is a little trick that John is going to show us, so when you want to make a frame for the Snow Crystal Flower, if you go to JND539 Festive FrameMaker die set (being released very soon) which has a FrameMaker die which is very slightly over a 5" frame, you can use that . If you have got a 5" FrameMaker die this can fit into it easily.



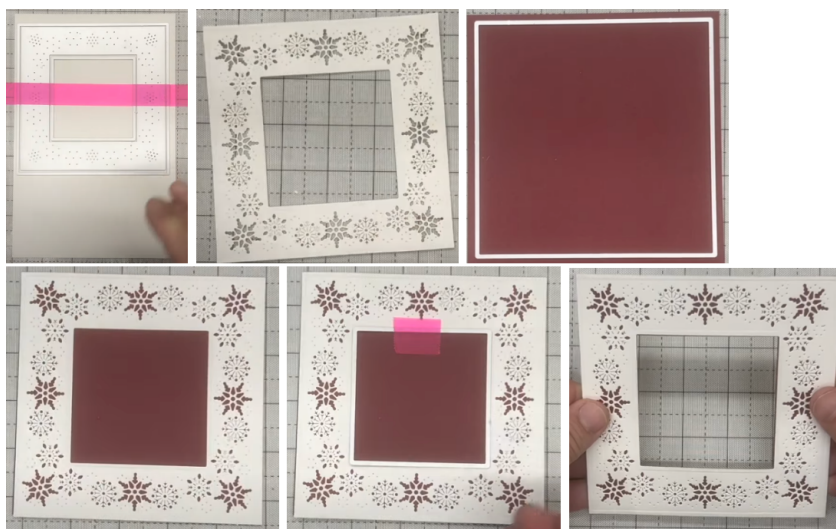
Materials:

6½" x 6½" White Top Folding Card Blank

JND536 Twisting Snowflake Die Set (7)
 JND537 Snow Crystal Flower Die Set (9)
 JND532 Sweeping Boughs Slimline Die
 Essential Coconut White Card
 Essential Burgundy Card
 Copper Card
 Christmas Green card
 A4 Die Cutting Machine
 White stick on Pearls various sizes
 Glue Glaze
 3D Glue Gel and a cocktail stick or similar
 2mm Foam Tape
 Craft Kit

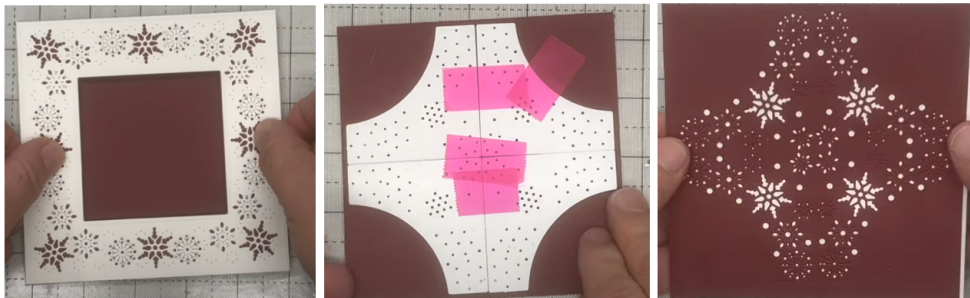
Method:

- Cut a piece of Coconut white card to 5½" x 8¼", lay it evenly onto your craft mat, then take a long piece of repositionable tape and pick up the inside square and place over the frame and press down, then pick that up and add over the outside square and press that down, you can then tape this down onto your white card and run through your die cutting machine.
- Then take a piece of the Burgundy card cut to the same size and place the outside square die evenly onto it and cut that out. Then using spray glue onto the back of the white snowflake frame and add this onto the burgundy square. Tip: if you are going to use wet glue or glue glaze you need to leave it to dry for a couple of hours at least as you don't want the glue to swish through the snowflakes as this spoil your frame.
- Then take the centre die no 3, and click that down into the middle, tape it down and run that through your die cutting machine. The alternative way to do this is to cut your 5" FrameMaker die out of the Burgundy and add the white snowflake frame onto it.



- We are now going to work on our centre panel, so cut a piece of the Burgundy card to 4¾" x 4¾" (not 5½" x 5½") which John said on the video, his will fit behind out frame.

- Then take the corner dies no:2 – 5 from the JND537 Snow Crystal Flower die set and place 2 of them evenly top and bottom against each other so the curves are pointing towards the corners and tape them together, then do the same to the bottom 2, and finally move the dies so they are even within the square, add tape onto it and run through your die cutting machine, so you have created your own die shape. Add spray glue the back and add onto a $4\frac{3}{4}$ " x $4\frac{3}{4}$ " piece of the Coconut white card. This will give you this beautiful square below with the snowflakes showing through, Oh I am loving this card.



- Bring back in your frame and add a double layer of foam tape to make 4mm or if you have 5mm you could use that, onto the back to give us some depth then remove the yellow backing and use the snowflakes and dots as a guide to add evenly over the front of your snowflake square. If you have any card overhanging from the back just take your large scissors and at an angle undercut these pieces off to trim out anything that shows on the front.



- John has already prepared the card base, this is a $6\frac{1}{2}$ " x $6\frac{1}{2}$ " top folding white card blank, with a $5\frac{1}{2}$ " x $5\frac{1}{2}$ " layer of Copper, a $5\frac{3}{8}$ " x $5\frac{3}{8}$ " of Burgundy and $5\frac{1}{4}$ " x $5\frac{1}{4}$ " layer of Coconut White, I am hoping I have worked these measurements out correctly by using the grid lines on the mat. Add wet glue to the back of the centre square and making sure it is a top folding card, add this evenly onto the front of your card.
- To decorate the card John has cut out 2 sets of the Sweeping Boughs and placed them onto the mat. In this set you will get a long and a short, a left and a right die. He has already made up 4 of the Snow Crystal Flowers in different layers, from the same Burgundy and Copper card that we used on the layers and added a small white pearl into the centre. There is a separate video and instructions showing how to make these, coming within the group very soon, so look out for them.



- To add the Sweeping Boughs, we are going to use Glue Glaze and dab it through the centre of the 4 stems then add around the top left of your frame, then turn the smaller boughs over and repeat exactly the same on the reverse and arrange these on the bottom right corner of the frame, just making sure that they do not go over the bottom of your card otherwise it will not stand up properly.



- Then finally for the 4 Snowflake flowers we will use the 3D Glue Gel and a cocktail stick to add a dab of the gel onto the back of each flower, you can see the 4 different layers made up below.

Also below is a beautiful sample made by Lesley Lakin



Your creation is now complete. I hope you have enjoyed these instructions.