

JND520 – Framed Card Lilacs – 4 July 2025 - by John Lockwood



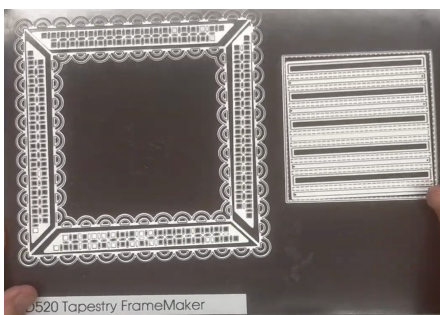
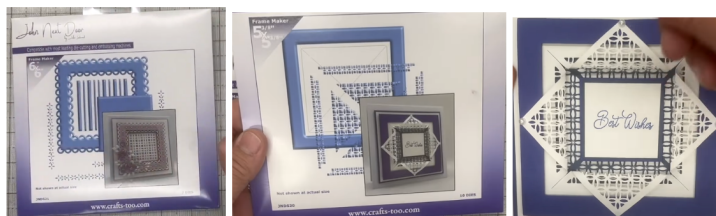
Instructions by June Smith

John has created a 'You Tube Video' dated 4th July 2025, using the new JND520 Tapestry 5" x 5" FrameMaker Die set, where he demonstrates how to make a card. I would advise that you visit it as well as following these instructions.

Information:

As you can see the inside dies can be cut out of white card and you can pull them out and automatically loop over to the edge of the frame. There is another video and instructions showing how this was made.

For this card we will also be using the centre panel dies from JND521 Square Scallop 6" x 6" FrameMaker die set.



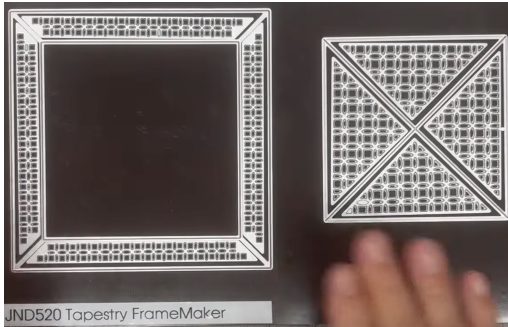
JND521 Square Scallop 6" x 6" FrameMaker Die Set (7)

Die 1: Outside Scalloped Frame

Dies 2-5: Detailed inside panels for the frame

Die 6: Dotted Square

Die 7: Stitched Insert Square



JND520 Tapestry 5" x 5" FrameMaker Die Set (10)

Die 1: Outside Frame $5\frac{3}{8}$ " x $5\frac{3}{8}$ "

Dies 2 – 5: Scallop Insert dies which fit into die no 1

Die 3: Square and Cross in the middle

Dies 4-7 Decorative looped triangles

Materials:

7" x 7" White Top Folding Card Blank

JND520 Tapestry 5" x 5" FrameMaker Die Set (10)

JND521 Square Scallop 6" x 6" FrameMaker Die Set (7)

PCD204 Presscut Plain Squares (32)

JND501 Stitched Dogwood

JND502 Stitched Leaves (6)

CTJJ260 Simple Poppies Stamp Set

Essential Coconut White Card

Canvas Card – Sherbert Pink, Lilac, Mulberry

CT902 Precision Stamp Block

Versafine Smokey Grey Ink Pad

Die Cutting Machine

Dew Drops

Glue Glaze

3D Glue Gel and a cocktail stick

2mm Foam Tape

Craft Kit

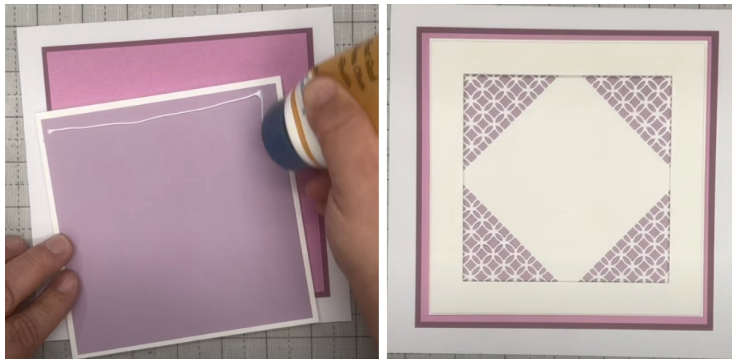
Method:

- Take a piece of Coconut White card and tape down the outside FrameMaker die onto it and run through your die cutting machine. Add foam tape onto the back of it and put to one side.
- Now we want to make our background so take a piece of Coconut White card cut to $5\frac{1}{2}$ " x $5\frac{1}{2}$ ". We are then going to make a pattern that doesn't exist, so take the 4 looped triangle corner dies and tape them down as per the photo below, then run through your die cutting machine. This die was based on John's very first die that he designed which was the Sandwich Box and this is a different version of it.
- John has already cut this out and mounted it onto a piece of the Canvas Lilac card. If you then position the frame over the top you have that little white rim

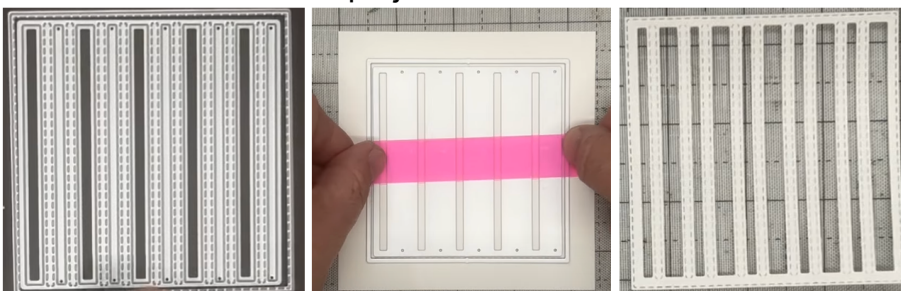
around the outside. Add foam tape onto the back, remove the yellow backing and add onto the front of your card.



- John has already layered up the top folding card blank and added a 6" x 6 layer of the Mulberry and 5 $\frac{3}{4}$ " x 5 $\frac{3}{4}$ " Sherbet Pink card. Add wet glue to the front panel and add onto the card. At this point we could just add some flowers with a stamped sentiment in the middle to make a beautiful card, but we are going to be taking this a little bit further.

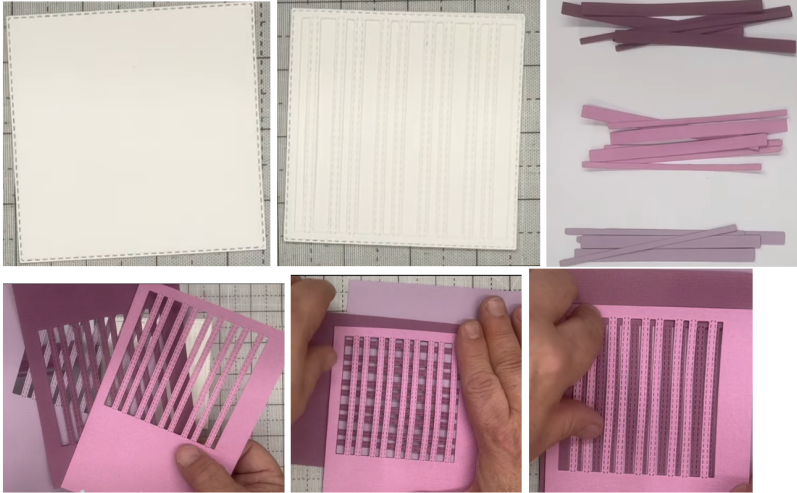


- We are then going to use the centre and outer stitched die from JND521 Square Scallop 6" x 6" FrameMaker die set, it has beautiful stitched strips running down it, it goes large small, large small, all the way along. It can be paper pieced or rotated to give you a beautiful tartan pattern. There are lots of the samples in the group to give you some ideas.
- Take a 4 $\frac{1}{2}$ " x 4 $\frac{1}{2}$ " scrap of Coconut White card and a long piece of repositionable tape, pick up the outside square so you can move it around with the tape handles, hover over the middle die and press down you can then use the tape handles to place the die into the centre of the white card and press down, then run through your die cutting machine. Did you notice that if you placed this in the middle of the square and cut it out, it gives you another frame for another project.

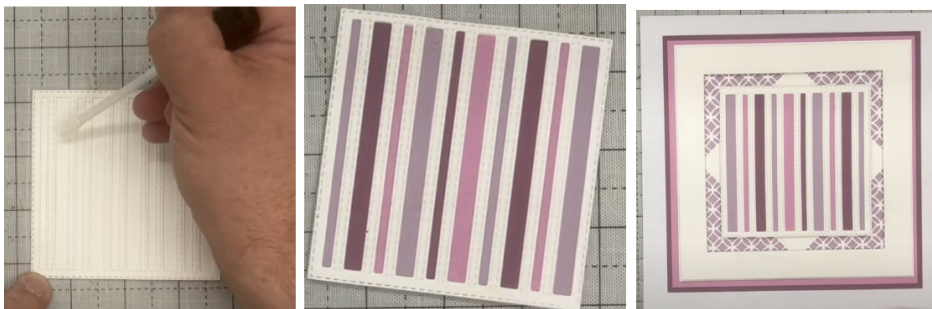


- Then take just the outside stitched square and cut it out of a piece of Coconut White card. Then use a little bit of spray glue onto the striped square and add this onto the white square.

- John has then precut the stitched die out of the 3 colours of card that has been used for this card. If you layered up the cut out pieces and rotate them you have a beautiful tartan type design for another project. You could also weave the strips in and out to give you a completely different design. There are so many combinations that you can use.

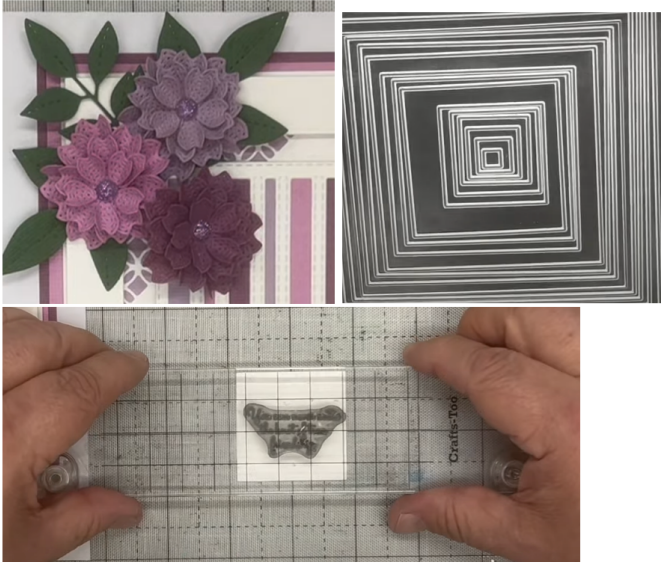


- Use your glue glaze to add 2 or 3 dabs down each of the first 3 strips and add a one of the thinner strips onto the first area, then for the next Sherbert colour take a wide strip of the next colour and add that into place, then a thin mulberry strip, continue in this vane until you have added all the strips. Remember you can do this 3 times because you have already cut the 3 colours of strips out.
- Once you have finished, add foam tape onto the back and add onto the front of your card, you could add it as a straight square or rotate it which is what John is doing today. You could add some little white pearls onto the joins of the circles which would look nice, not sure if that is what John is going to do on this card, to get a beautiful finish.



- John has then brought in some of the Stitched Leaves which he has already cut out of green card, also some of the Stitch Dogwood flowers in the 3 different shades. However, we want to add the centre, so take the 2" square die number 25 (or 13 if you are using PCD205) and cut this out of the Mulberry card, then cut from a scrap of the Coconut White card, die number 26 which is 1¾" square.
- We are then going to add our sentiment onto the white square, the stamp says, 'You can never untie the knot of true friendship', using your precision stamp block to line up the stamp, add Smokey Grey ink pad onto the stamp, then add onto the white square and press down, then add a bit of foam tape

onto the back of the white and adhere onto the Mulberry square, add foam tape onto the back of the Mulberry and add this into the middle of your card.



Information: This precision block is one of my most go to tools, I always seemed to shy away from stamping because I used to get into so much mess but since the stamping block came out I am happy to stamp all day long, if you don't have one why not try it out yourself.

- To finish off our card we just have to add the flowers and foliage, we will use wet glue onto the back of the leaves and 3D Glue Gel with a cocktail stick to use as a handle, onto the back of the Mulberry flowers. There are separate instructions within the group of how to make up the Mulberry Flowers and add a dew drop into the centre.
- For the smaller leaves we will be using glue glaze onto the back of the leaves and adding them onto the bottom right of the white sentiment and glue gel for the flower.



Below on the right is a card made by Lesley Lakin



Your creation is now complete. I hope you have enjoyed these instructions.