

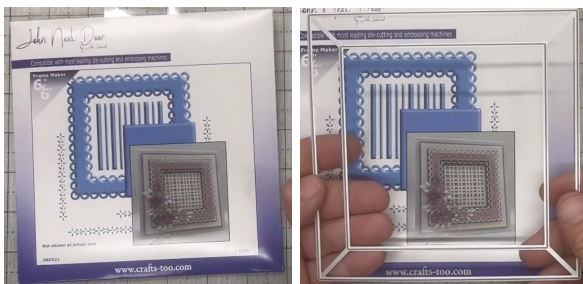
JND521 Scalloped – Framed Card – 4 July 2025 - by John Lockwood



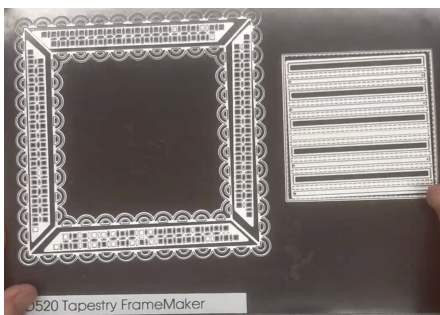
Instructions by June Smith

John has created a 'You Tube Video' dated 4th July 2025, using the new JND521 Scalloped 6" x 6" FrameMaker die set, where he demonstrates how to make a card. I would advise that you visit it as well as following these instructions.

Information:



We are also using the insert die from the JND520 Tapestry FrameMaker set.



JND521 Square Scallop 6" x 6" FrameMaker Die Set (7)

Die 1: Outside Scalloped Frame

Dies 2-5: Detailed inside panels for the frame

Die 6: Dotted Square

Die 7:Stitched Insert Square

Materials

7" x 7" White Top Folding Card Blank

JND520 Tapestry 5" x 5" FrameMaker Die Set (10)

JND521 Square Scallop 6" x 6" FrameMaker Die Set (7)

Essential Coconut White Card

Canvas Card – Various Pinks

CTJJ260 Simple Poppies Stamp Set

Two Tone Pink Ribbon to make a Treble Bow

A4 Die Cutting Machine

Glue Gel

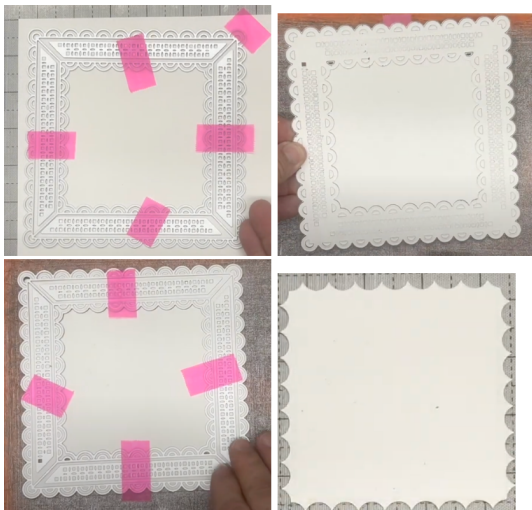
Glue Glaze

2mm Foam Tape

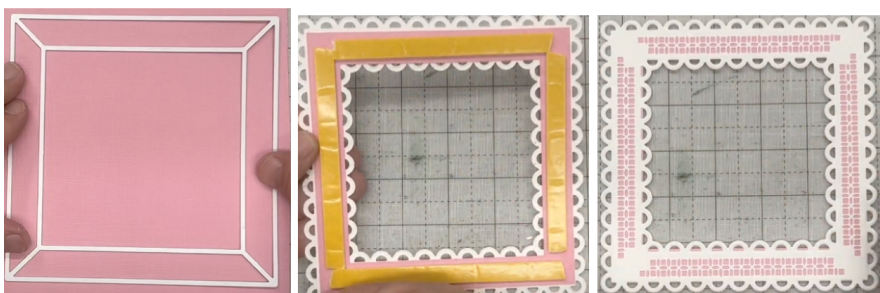
Craft Kit

Method:

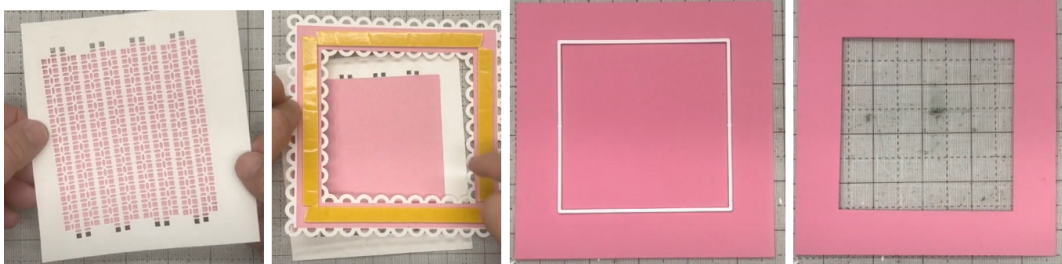
- Take an A4 sheet of Coconut White card and place die no 1 onto it first, and just tape it loosely in one corner with tape. Then place dies 2 – 5 into the frame cutting side down and tape them down, run these through your A4 die cutting machine. Then depending on which A4 machine you have you may find that when you remove the waste white piece and turn the die over you may see that not all the pieces have cut out, so rotate the frame so that when you run through the machine again that is the sides that will go through the machine. You can see below that all the pieces have now cut out. Keep the middle piece as we may need this later.



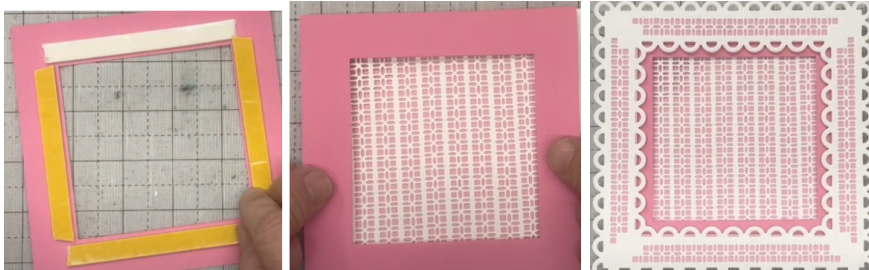
- Then bring in a piece of soft pink card and tape down the inside frame from the JND520 Tapestry FrameMaker set, then run that through your die cutting machine.
- Add spray glue onto the back of the white frame and adhere onto the soft pink frame, then add foam tape around the outside.



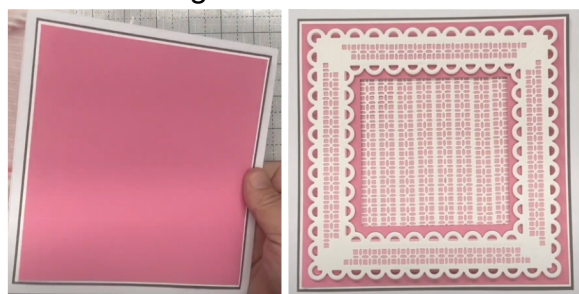
- We now want to make our centre, so take a scrap of Coconut White card which is roughly about 5¼" x 5¼" square, tape down the 4 inside panels die 2-5. You can add a gap between them or butt the dies up together, which is what John has done and run through your die cutting machine. You should end up with this white piece below which has the square of soft pink left over from cutting the frame behind it. John has added spray glue to the back of the white and adhered onto the pink.
- Take a slightly darker pink card cut to 5¼" x 5¼", tape down the square die no 6 centrally onto it and run through your die cutting machine. You then have the perfect frame to go on our card.



- Turn the frame over and add foam tape around the inside of the frame, remove the backing and adhere over the middle piece, you can see 8 lines of the decorative pattern facing you, it is so pretty. If you have any of the white showing use your scissors at an angle to undercut them off.



- Then take the main frame, remove the yellow backing and adhere over the top.
- Bring in your 7" x 7" top folding card blank, John has already layered this up with a layer of the dark pink at 6½" x 6½", then a white layer at 6⅝" x 6⅝" and a grey layer at 6¾" x 6¾". Turn the frame over and remove the yellow backing and adhere onto the card.



- John has then taken 2 of the nesting squares from PCD204 Presscut Plain Squares die set, it looks like dies 25 and 26.

- He has then stamped a sentiment in the middle of the white square using Versafine Smokey Grey ink pad and adhered this onto the next die up of the soft pink card. The stamp says:

May all your birthday
wishes come true,
Today is the day
I'm thinking of you.

This is perfect for this card.

- Add the square centrally in the middle, use the background pattern to get it exactly in the centre.



- All we need to do now is to decorate it, John has made a treble bow (I Think) from the two tone pink ribbon, if you are not sure how to do this, there is a separate set of instructions showing how to make different bows using the new CT2038-7904 Wooden Bow Maker in the group. John is using 3D glue gel and a cocktail stick, or similar, to add a blob onto the back of the knot of the bow and adhere just under the bottom left corner of the sentiment square in the middle of the card.
- He then has some of the Shadow leaves in grey card, snip one in half and add some gel on the back of the 3 leaves and add onto the knot of the bow, then repeat another 3 leaves and this time John is using a syringe to add the glue gel so you can see how easy it is either way, this piece will go at the opposite end of the bow. John has made up some of the Stitched Flowers from the same pink card and from the green he has added the centre of the flower, it really does look effective. Take your scissors and trim down the tails of the bow.



- To balance this out John has got some of the Stitched Vine Leaves in the same pink, a smaller stitched dogwood flower with a green centre and a tiny bit of the green leaves, he has added them onto the opposite corner of the sentiment.



Your creation is now complete. I hope you have enjoyed these instructions.