

JND527 Mini Wreath Bauble Card –26 July 2025 - by John Lockwood



Instructions by June Smith

John has created a 'You Tube Video' dated 26 July 2025, using the new JND527 Mini Circle Wreath Die set, where he demonstrates how to make a card. I would advise that you visit it as well as following these instructions

Information:

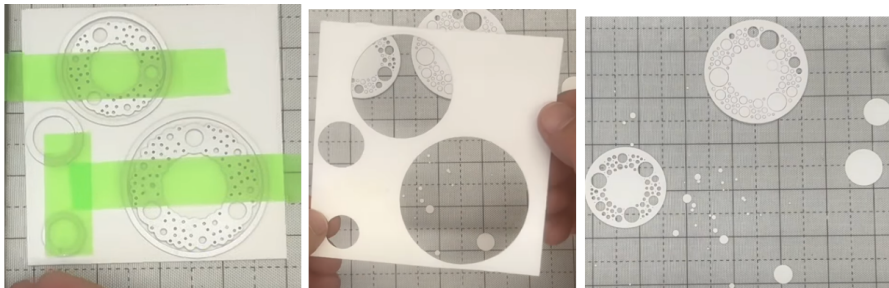


Materials

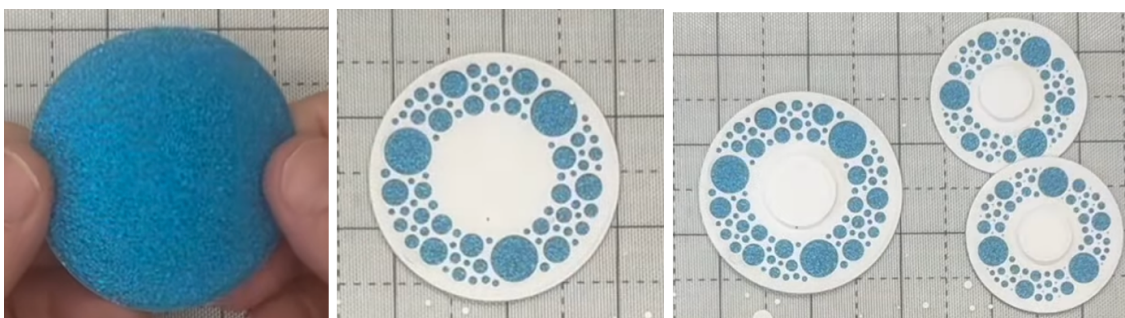
8" x 8" White Top Folding Card Blank
JND527 Mini Circle Wreath Die (10)
JND532 Sweeping Boughs Die (4)
JND492 Retro Snowflake 3D Embossing Folder
JND499 Notched Floral FrameMaker Die (10)
JND500 Grand Notched FrameMaker Die (8)
Essential Coconut White Card
Sapphire Mirror Card
CA Turquoise Non-Shed Glitter Card
CA Titanium Non-Shed Glitter Card
Ribbon
Arora Borealis Gems
Die Cutting Machine
Glue Glaze
3D Glue Gel with a syringe
2mm Foam Tape
Craft Kit

Method:

- We are going to make one of the larger white circles and 2 of the smaller ones, so this is how we do one set of them: –
- Take a scrap of Coconut white card and lay this onto your mat, then take a long piece of removable tape and pick up the outer circle die, hover this over the inside of the bubbles die then tape this onto your coconut white card, then repeat this using the larger circle, finally adding the 2 inner circles side by side and run this through your die cutting machine. As you can see below the waste square would make a lovely background for another project. Then repeat cutting out the smaller circle again. Remove all the fall away pieces and if you wanted you could save these for another project or paper piece them, but we are not going to do that today.



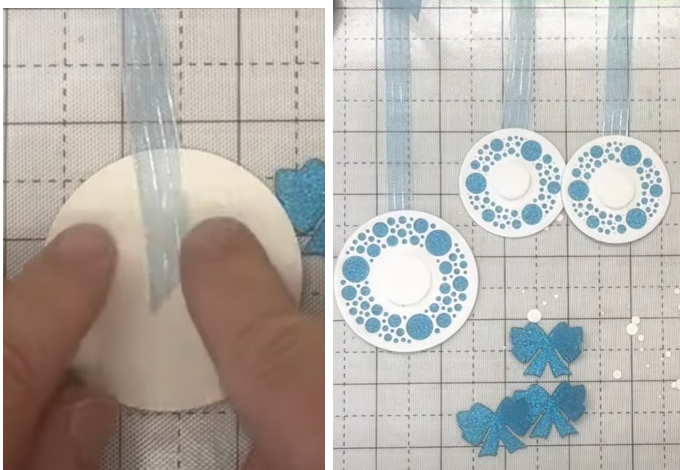
- Then take one of the larger outside circles and also the outside smaller circle and cut these out of the beautiful Turquoise non-shed Glitter card, then cut another of the outside smaller circles in the glitter card.
- Also cut out 2 of the small outer circle from white card. Add spray onto the back of the larger white circle, and also add wet glue into the centre, then add onto the glitter circle.
- Then take one of the larger white circles and add a little bit of foam tape onto the back, remove the yellow backing and add this into the centre of your large white and turquoise circle. Then repeat for the 2 smaller ones, see photo below.



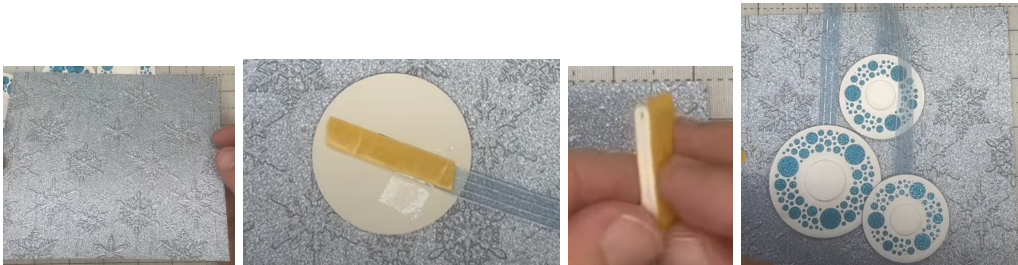
- Also, from the bow die cut 3 of these out of the turquoise scraps.



- John then has some blue ribbon with silver streaks running down it and using a bit of normal Sellotape add to the reverse of one of the baubles, cut the end off so you have a 6" piece. then repeat this twice more for the 2 smaller baubles, you should end up with the 3 baubles below. We are not going to add the bows onto the baubles at this stage.



- Then cut a 5½" x 5½" piece of the CA Titanium Non-Shed Glitter Card and add this into your Retro Snowflake 3D Embossing folder and run this through your machine. We then want to arrange the baubles onto the front, so add a piece of foam tape onto the back of your large bauble, remove the yellow backing and add onto the front of the embossed piece, then repeat for one of the smaller baubles adding this one above and slightly to the right. Then for the third bauble we will need a longer piece of foam tape, fold it over, so you have a double layer and add onto the remaining bauble and this time add it so that it is resting above the bottom larger bauble, see photo below.



- We then want to seal the end of each ribbon onto the back of the card, so pull it over the top of the card so the ribbon is straight and tape the end down.
- Then repeat for the other 2 ribbon ends, you will find that the third one runs over the top of the large bauble. Then take your scissors and cut off the excess ribbon from the back.



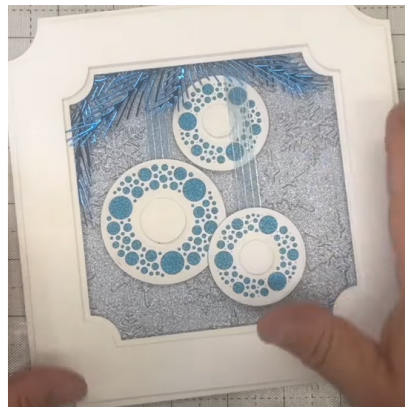
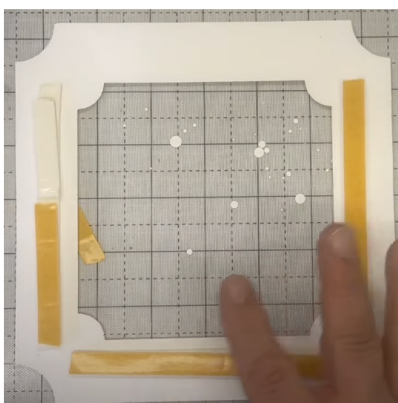
- Then turn it over and add a line of foam tape along the top so it is over the ribbon. Then from the Sapphire mirror card cut out 2 sets of the Sweeping Boughs and add one set plus just one of the smaller boughs onto the foam, see photo below, keeping one of the remaining large boughs for later, the rest can be used on another card.



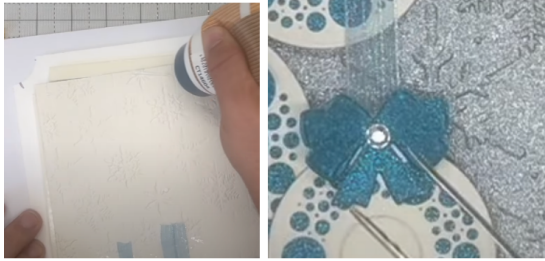
- Then add a second layer of foam tape across the top.



- John has already made up a frame using the 7" Grand Notched FrameMaker and the 6" Notched Floral FrameMaker dies in Coconut white card and with a layer of foam tape in between.
- For this next bit we are going to add a double layer of foam tape onto 3 sides only of the frame, remove the backing, bring back in the main card with the foam tape over the top of the sweeping boughs, remove the yellow backing from the tape on there and making sure that the top of the frame is the one that doesn't have foam tape on, and layer the frame evenly onto the top. John then adheres the remaining large sweeping boughs behind the top left-hand corner of the frame.



- Then take your 8" x 8" top folding card blank, turn the main card over and add some wet glue onto the back and add this onto your top folding card blank. Then we are going to add our bows and for this we will use a syringe of glue gel on the back and adhere onto the top of each bauble where the ribbon is. Then finally add an Arora Borealis gem into the centre of each bow.



Your creation is now complete. I hope you have enjoyed these instructions.

This is Lesley Lakin's Version in White, Soft Blue and Silver Mirror, with 'Merry Christmas' on the front. Stunning Creation Lesley.

