

JND528 Glitter Flower Card – 13 July 2025 - by John Lockwood



Instructions by June Smith

John has created a 'You Tube Video' dated 13th July 2025, using the new JND528 Snowflake Crystal Flower Die set, where he demonstrates how to make a card. I would advise that you visit it as well as following these instructions.

Information:



The Sweeping Boughs Slimline Die fits easily into the new Mini Die Cutting Machine, it is something that you can use to cut out batches whilst watching the TV. You can also cut out batches of the JND528 Snowflake Crystal Flower die set. Above you can see one of the flowers which will go onto our card.



JND536 Twisting Snowflake Die Set

Die 1: Outside Cutting Square

Die 2: Snowflake FrameMaker

Die 3: Inside Cutting Square

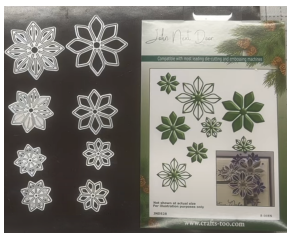
Die 4: Square cutting die with outline decorative corners built into it

Die 5: Narrow Frame matching the outside shape of the Snowflake

Die 6: Wider Frame matching the outside shape of the Snowflake

Die 7: Snowflake die

Information: Die no 2 has been designed to work with the 5" FrameMaker and also the new FrameMaker Die in this collection, coming very soon.



JND537 Snow Crystal Flower Die Set

Die 1: Outside Stitched Cutting Square Frame incorporating Stitched Circle in the centre size 5" x 5".

Die 2 - 5: Snowflake Corner Panels

Die 6: Inside Stitched Circle

Die 7: Snow Crystal Flower inside a Circle

Die 8: Narrow Frame matching the outside shape of the Snowflake

Die 9: Detailed Snow Crystal Flower

Materials

7" x 7" Top Folding Card Blank

JND528 Snowflake Crystal Flower (8)

JND537 Snow Crystal Flower Die Set (9)

JND532 Sweeping Boughs Slimline Dies (4)

JND536 Twisting Snowflake die (7)

JND508 Handy Sentiment Stamps (Happy Christmas)

Essential Coconut White Card

Waterfall Glitter Card – Rose Gold and Normal Gold,

PCD204 Presscut Plain Nesting Squares (32)

CT902 Precision Stamp Block

Embossing Pad

Gold Glitter

Die Cutting Machine

White Stick on Pearls

Glue Glaze

3D Glue Gel with a cocktail stick or similar

Foam Tape

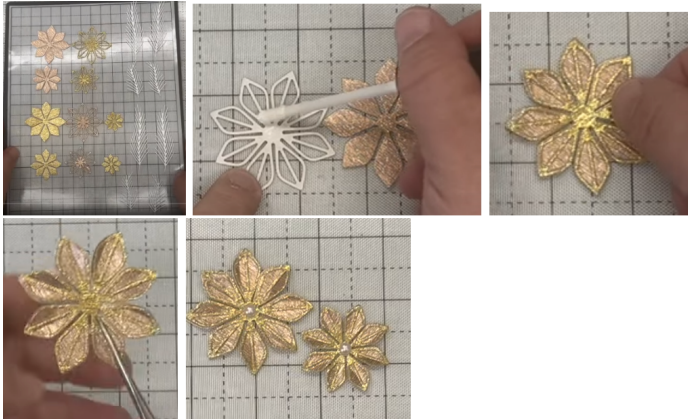
Craft Kit

Method:

- John has already cut out a set of the dies using Waterfall Glitter Card in Rose Gold and Normal Gold. He has also cut 2 sets of the Sweeping Boughs from Coconut White Card. He will show us, using the large ones how to put the flower together. We will be using Glue Glaze which is the best product for adhering these together. So, take the solid Rose Gold flower and the outline normal gold flower at the top of the row, turn the outline one over so you are working on the back and add glue glaze in the centre and the top and bottom of each petal where there is like a bigger dot. You can use spray glue if you want but it doesn't give as good a bond as the glue glaze does. Pick up the outline one, turn it over and hover this over the solid flower, you can see if it doesn't fit, once you have got it in the right place, pick the flower up and press

each petal together, then turn it over face down onto your desk and give it a good press down just to be doubly sure.

- Then hold each petal with your pointed tweezers and fold each petal upwards. Repeated this process with the smaller flower. Then add a white stick on pearl into the centre each flower. If you find that one of the top petals sticks up just waft your wand of the glue glaze under it and press it back down again, this does happen.



- To make the rest of this card cut a piece of coconut white card to 5 $\frac{3}{4}$ " x 5 $\frac{3}{4}$ " and tape down die no: 2: Snowflake FrameMaker from the Twisting Snowflake set and run this through your die cutting machine to give us this beautiful piece with the different snowflakes running around the inside.
- Then cut a piece of the Gold Waterfall Glitter Card to 5 $\frac{1}{4}$ " x 5 $\frac{1}{4}$ " and adhere this onto the white card. Add foam tape on the back, remove the yellow backing and adhere onto a 7" x 7" top folding card which has a layer of Rose Gold Glitter Card at 6 $\frac{1}{2}$ " x 6 $\frac{1}{2}$ ", a layer of Gold Waterfall card at 6 $\frac{3}{8}$ " x 6 $\frac{3}{8}$ " and a Coconut White layer at 6 $\frac{1}{4}$ " x 6 $\frac{1}{4}$ ".



- Cut a 3" square of Waterfall Rose Gold, a 2 $\frac{7}{8}$ " square of Waterfall Gold and a 2 $\frac{3}{4}$ " layer of Coconut White. Then stamped the 'Happy Christmas' stamp onto using an embossing pad which has gold embossing power over it and has been heat set. Layer these up with wet glue, add foam tape onto the back and adhere into the centre of your card. Although you may not see it on camera easily but there is an actual square embossed in the middle of the card, I have tried to take a snap of it for you below.



- We can now decorate the front of the card, so bring in your flowers and leaves. What we want to do is to create a sweep going from the top left down to the bottom right of the Sweeping Boughs, so turn them over and add glue gel down one of the spines, then tuck the bottom just behind the top left corner of the sentiment square and up towards the top corner of your card. Repeat this again adding this one just behind the bottom left corner. Then repeat with the smaller boughs tucking one behind the corner at the top and the other behind the corner at the bottom, it is not easy to see white on white on a photo but if you watch the video you can see it easily.



- To add our flowers, take a cocktail stick and squeeze a small blob onto your cocktail stick, add the various flowers below onto it and use the cocktail stick as a wand to place onto the front of your card. The top left large one is Copper and Gold, and the bottom right is Gold onto Copper, repeat for the next size down. Then we are going to swoop the colours around so add a smaller Gold on to Copper one behind the flower at the top left and the opposite onto the bottom right.



- Finally adding the remaining 2 flowers just tucked behind the largest flower on the corner of the middle sentiment at each end.



Your creation is now complete. I hope you have enjoyed these instructions.