

JND528 & JND537 White & Silver Card – 12 July 2025 - by John Lockwood



Instructions by June Smith

John has created a 'You Tube Video' dated 12th July 2025, using the new JND519 Frame Maker 5¾" Die set, where he demonstrates how to make a card. I would advise that you visit it as well as following these instructions.

Information:



JND537 Snow Crystal Flower Die Set

Die 1: Outside Stitched Cutting Square Frame incorporating Stitched Circle in the centre size 5" x 5".

Die 2 - 5: Snowflake Corner Panels

Die 6: Inside Stitched Circle

Die 7: Square cutting die with outline decorative corners built into it

Die 8: Narrow Frame matching the outside shape of the Snowflake

Die 9: Snow Crystal Flower framed in a cutting circle

Materials

7" x 7" Top Folding Card Blank

JND528 Snowflake Crystal Flower (8)

JND537 Snow Crystal Flower Die Set (9)

JND532 Sweeping boughs Slimline Dies (4)

JND492 Retro Snowflake Embossing Folder

JND508 Handy Sentiment Stamps

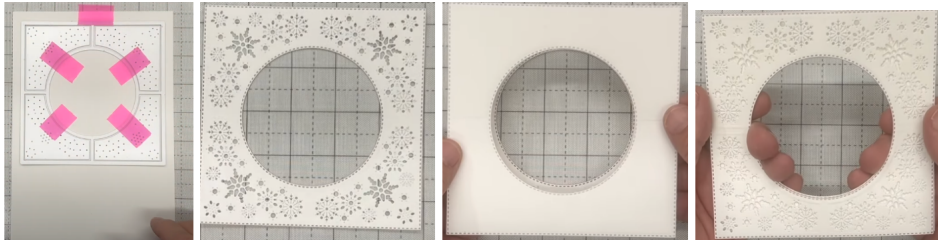
Essential Coconut White Card

Silver Mirror Card

CT902 Precision Stamp Block
 Versafine Smokey Grey Ink
 Die Cutting Machine
 White Stick on Pearls various sizes
 Glue Glaze
 3D Glue Gel with a cocktail stick or similar
 2mm & 3mm Foam Tape
 Craft Kit

Method:

- Take a piece of Coconut White card cut to $5\frac{3}{4}" \times 5\frac{3}{4}"$. Then take die no 1 which is main frame and tape this down just on the top so that no tape touches the inside of the frame. Then take the corner piece dies 2-5 and tape them down evenly into the middle of each corner. Run through your die cutting machine. Then take another piece of Coconut white card and cut out just die no 1. Using spray glue behind the patterned piece and adhere the two together to get this beautiful patterned perfect frame.

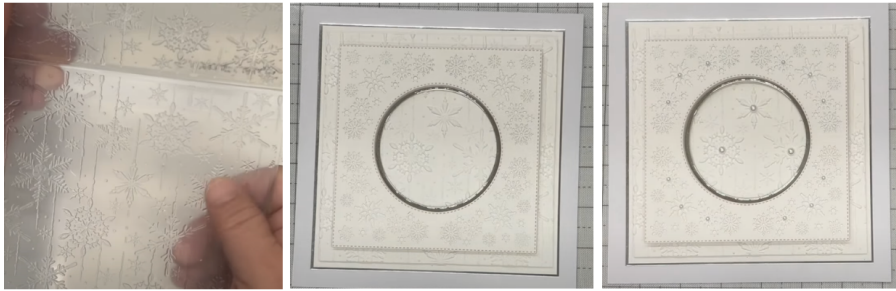


- Now we want to introduce that little bit of silver, so cut a piece to $4\frac{3}{4}" \times 4\frac{3}{4}"$ if you just position it behind the square it doesn't show through at the edges. Take die no 6 and place this into the centre so that it is even all the way around, tape it down and run just the silver piece through your die cutting machine. As you can see the plates have marked the silver, but it is not a problem for this project because most of it is hidden. Add foam tape onto the back of the white square, remove the yellow backing and adhere over the silver, to give us this perfect silver rim around the middle.

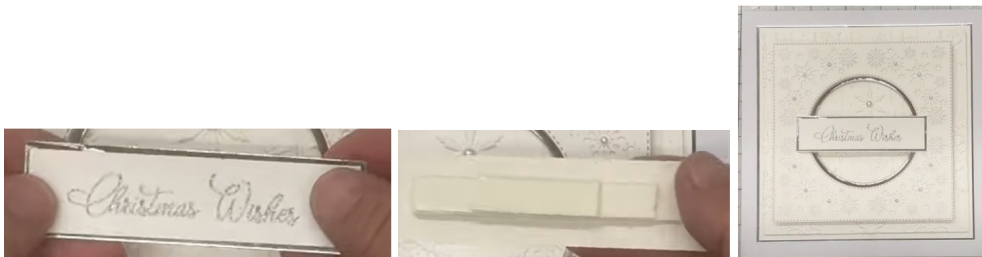


- Bring in your white top folding card blank, add a layer of silver at $6\frac{1}{8}" \times 6\frac{1}{8}"$, a coconut white at $6" \times 6"$. Then another piece of coconut white card to $5\frac{3}{4}" \times 5\frac{3}{4}"$ and run this through the Retro Snowflake embossing folder, (this is not a new one), layer these up with wet glue. Then add foam tape onto the back of the main piece and adhere onto the front. You can see the 3 beautiful snowflakes in the middle.
- To bring the snowflakes out take some of the white stick on pearls and add a medium one into the 3 centre snowflakes, then for the snowflakes around the

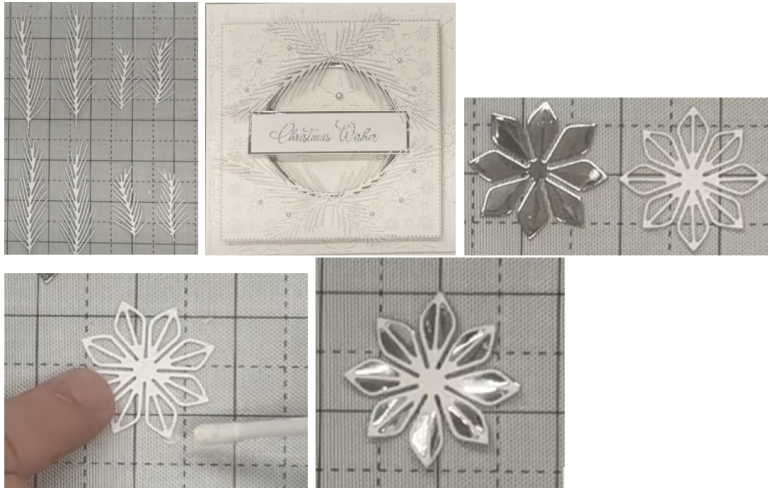
outside add one of the smaller pearls to each one, or just a selection, to make them stand out.



- We then need to add our sentiment, John has use already prepared this using the 'Christmas Wishes' stamped onto a scrap of 1" depth Coconut White card and added this onto a layer of silver mirror card behind. Then he has added 3 different widths of foam tape already onto the back, so reducing the width for each, and added the sentiment across the centre of the circle so the 3rd layer of foam attaches onto the inside snowflakes.



- We now want to add our flowers and leaves. John has already precut 2 complete sets of the Sweeping Boughs in white, there are 2 large and 2 small left and right facing dies in the set. Using glue glaze onto the back of each of the spines - you don't want glue everywhere - and arrange one set around the top of the circle and the other set around the bottom of the circle, just like a wreath.
- We now need to cut out our flowers, this is something you could do whilst watching the TV or in your spare time because I am sure you are going to be making lots of these for your Christmas cards. We want to cut 2 complete sets of the solid in silver mirror and the outline in white, the best way to stick these together is to use your glue glaze onto the back of the white flower, add a small dab in the centre and then just wipe the points/tips of each petal. When you add onto the silver, hover over first because if that doesn't fit, just rotate it once and you will find that it fits perfectly. You could see if you just added a smidgeon of the glue glaze onto the end of the petals it doesn't leak onto the silver.
- Then take your pointed tweezers and hold each petal and fold one gently towards you and for the next one gently behind to shape them, this gives them a bit more definition. It also catches more light from the silver which is what we want.



- John has made up a large with the small petal in the centre, to add this onto your card use 3D Glue Gel with a cocktail stick of similar to use as a handle so you can position the flower into position and then press it down gently onto the top boughs, then another onto the bottom. Then he has cut and made up quite a few of the medium sizes. Add glue gel onto the back and add either side of the large flower on the top and repeat on the bottom.
- Then add one either side of the sentiment. If you wanted too you could fill in the gaps with the miniature ones, but we are not going to do that for this card today.



- Finally bring back in your white pearls and add a large pearl into the centre of each flower.



Your creation is now complete. I hope you have enjoyed these instructions.