

JND541 Robin Card with JND531 & JND529 – 17 July 2025 - by John Lockwood



Instructions by June Smith

John has created a 'You Tube Video' dated 17th July 2025, using the new JND541 Robin Die set, where he demonstrates how to make a card. I would advise that you visit it as well as following these instructions.

Information:

The below mentioned dies are on a slimline plate which will go through your mini die cutting machine. The Snow Crystal Flower die can be used all year round as it quite simple.

We are also using the Twisting Snowflake die set, which I have added the numbers of the die, so it is easier to explain how to put them together, there is a separate set of instructions called JND536 Twisting Snowflake Card – 10 July 2025 which shows which dies are used to make a beautiful card including the frame.



JND536 Twisting Snowflake Die Set

Die 1: Outside Cutting Square

Die 2: Snowflake FrameMaker

Die 3: Inside Cutting Square

Die 4: Square cutting die with outline decorative corners built into it

Die 5: Narrow Frame matching the outside shape of the Snowflake

Die 6: Wider Frame matching the outside shape of the Snowflake

Die 7: Snowflake die

Materials

7" x 7" Top Folding White Card Blank

JND541 Robin Branch Slimline Die

JND529 Holly Slimline Die

JND531 Snow Crystal Flower Slimline Die

JND536 Twisting Snowflake Dies (7)

PCD205 Stitched Dot Squares (16)

Essential Coconut White Card

Waterfall Glitter Card – Rose Gold and Normal Gold

Gold Waterfall Glitter Card

Mini Die Cutting Machine

Small size Clear Crystal Gems

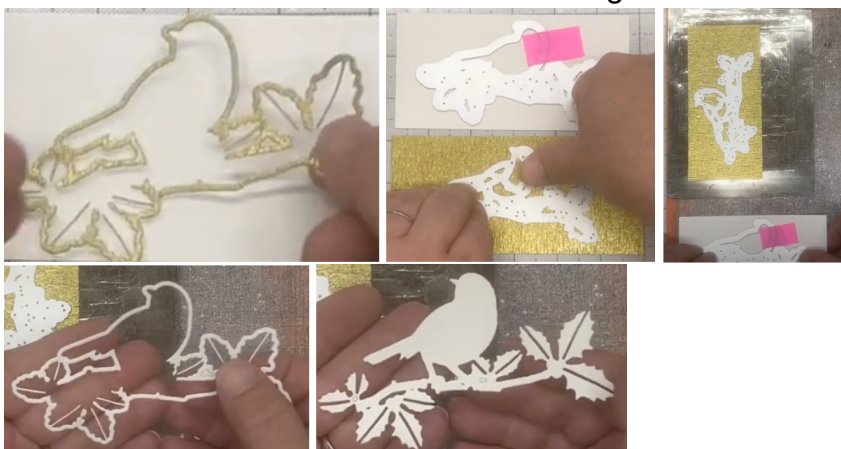
Glue Glaze

2mm Foam Tape

Craft Kit

Method:

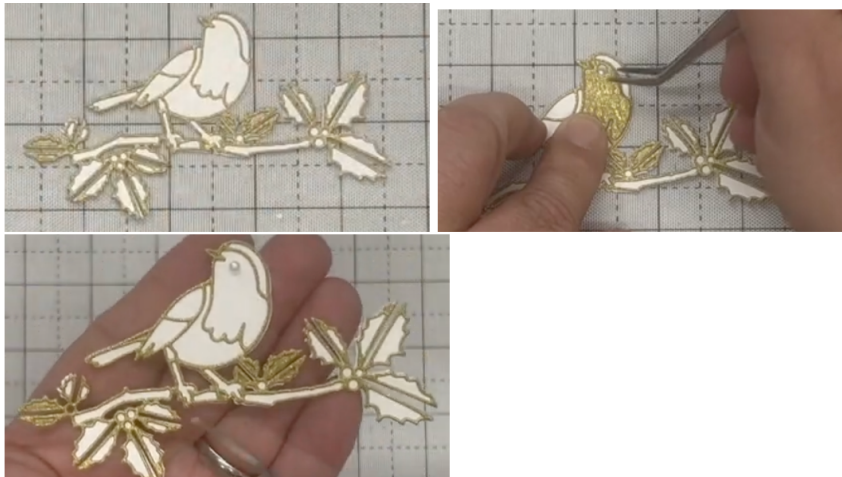
- Take some scraps of Coconut White card and tape down the Robin die. Then using the really fine Robin die, tape this down with Sellotape onto Waterfall card and place this one only onto your metal shim. Add these both onto your A4 plates and run through your die cutting machine. Take the card out of the die and you will see that you have the white outline and a solid inside white Robin sitting on a branch with some holly around him. If you then turn the gold waterfall piece over you can see every single piece has been cut out. Take your 4-in-1 tool and poke out the waste pieces. Please always use your metal shim behind a die when cutting out of Waterfall Glitter Card.



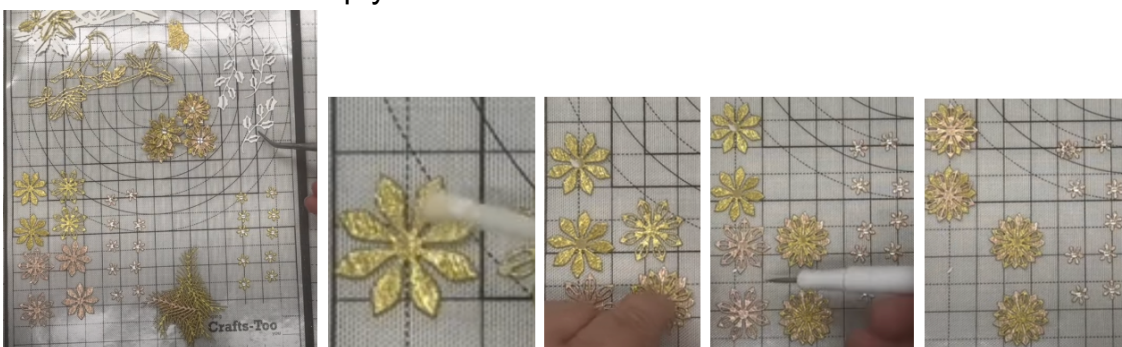
- Clean off all the little fall away pieces, with the exception of the waterfall face of the bird – keep this to one side. Then use your spray glue (or glue glaze) onto the back of the gold piece and add onto the white, if you start at one end

with the Holly and work your way along to the other end you will find that it fits over the white perfectly.

- On some of the other projects John has use a thin black pen to add the eye onto the robin, but for this project we will use a pair of tweezers to pick up one of the small stick on white pearls and add this onto the robin's head, however if you are unsure where to pop your pearl you can take the gold waterfall head we kept earlier and paper piece this over the die cut, you are then able to add a pencil or pen mark for the eye, remove the die cut piece as we no longer need this and add your pearl into position, even without colouring him in it looks so realistic.



- So now we want to put our card together. John has already cut out all the rest of the pieces we will use, so we have Coconut White for the Holly, Snow Crystal Flowers in both Golds, there are 10 of the smallest crystal flower dies in the set and John has added a clear crystal gem into each centre. Then the 3 Sweeping Boughs from the Robin Branch set in both Golds and a complete set of the Crystal Flowers which have the clear crystal gem in the centre.
- If you lay them out onto your board it is much easier to put together. All we need to do now is to add glue glaze into the centre of the 4 largest flowers, then add the next size down in the opposite gold onto it. Repeat for the next 3 alternating the colours – by laying them out on your board it is easier to add the correct gold onto the opposite gold, hopefully by looking at the photos below this will help you.



- John has already prepared his card base using the Rose Gold layers, I think it is 6" x 6". Then added a Coconut White layer which is 5¾" x 5¾" I think. Then added 2 layers of 2mm foam tape around the back of the frame, remove

the yellow backing and add this onto a 5" x 5" stitched square of Rose Gold card, which you could cut out using PCD205 Stitched Dot Square Die no 7.

- We can now take our Robin and position it across the frame, see photo below, we want to stick him flat onto the frame, so add glue glaze onto the back of the holly at both ends, we then need to support his body and for that we will use 3D Glue Gel, with a cocktail stick to add at least 2 decent blobs on top of each other behind his body. Then add this onto the frame and gently press down onto his body to spread the gel a bit.



- Then we can bring in the flowers and leaves, starting with the 6 white holly pieces which are a left and right facing, turn them face down onto your mat and add glue glaze onto 3 of them and add onto your card, then repeat for the other 3. It is very hard to see the white on here, but in real life you can see it easily. Then we bring in the small sweeping boughs and place these face down onto your mat, add glue glaze down the middle spines and add onto your card.



- Then for the flowers we will use the 3D Glue Gel and a cocktail stick to adhere 3 of them onto the left hand corner of the foliage and onto the opposite side so it balances it across.



- For the smaller flowers use glue glaze onto the back and adhere these randomly around the foliage and frame. Can you imagine your Christmas Tree lights sparkling along with the gems on this card, it is a great mantel piece pleaser.



Your creation is now complete. I hope you have enjoyed these instructions.