

## JND526 – Floral Lattice Card - by John Lockwood

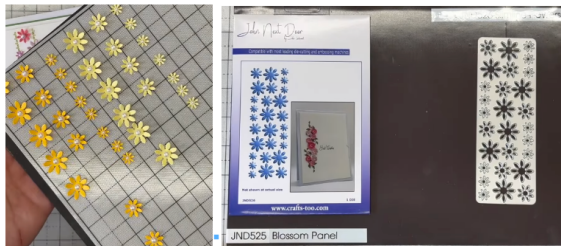


Instructions by June Smith

John has created a 'You Tube Video' dated 7th September 2025, using the new JND526 Mini Flower Plate Die, where he demonstrates how to make a card. I would advise that you visit it as well as following these instructions.

### Information:

Below you can see a full set of 2 different yellow card, each flower has been pressed into the centre with a small ball tool and then a small white pearl has been added into the centre. We will not be using the Yellow ones on our card today.

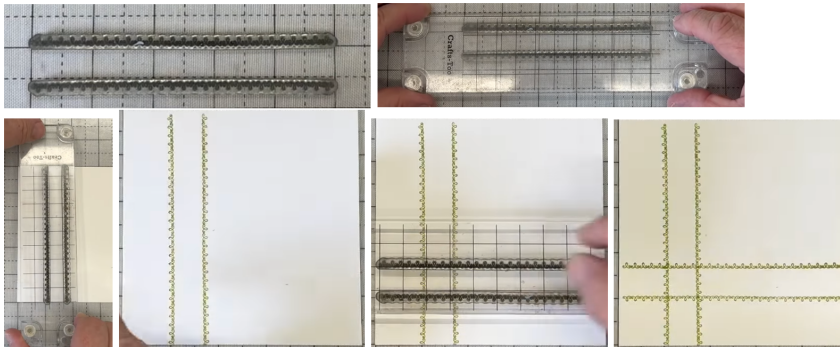


### Materials

6" x 6" Top Folding Card Blank  
JND526 Mini Flower Plate (28 flowers)  
Essential Coconut White Card  
Canvas Green Card  
Scraps of Canvas card – Lavender, Lilac and Pink  
JND508 Handy Sentiment Stamps - Sent with Love Stamp  
JND507 Sentiment Lines Stamps - Small Looped Strips Stamp  
CT902 Precision Stamp Block  
Versafine Clair – Avocado Ink Pad  
Small white pearls  
Multi Media Precision Mat  
Die Cutting Machine  
Glue Glaze  
2mm Foam Tape  
Craft Kit

### Method:

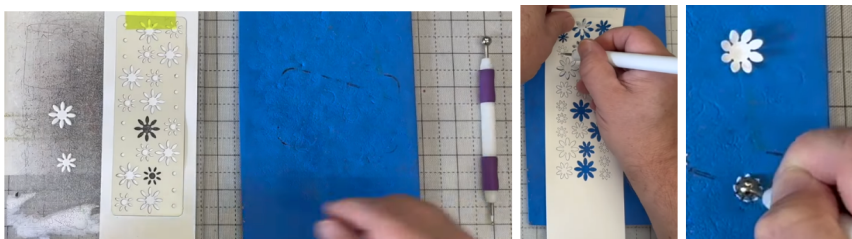
- Cut a piece of Coconut White card cut to 5" x 5", lay onto your mat evenly using the lines on the mat. Then bring in your Precision Stamping Block. Take the 2 looped string stamps and with the loops pointing downwards add this onto one of the lines of your multipurpose craft mat, then take the other stamp and lay this so the loops are facing upwards that is half an inch apart. Then line up your precision stamping block with the lines on the mat and press down and release it to pick the stamps up, turn the block over. Then ink up the stamps using Versafine Avocado ink pad, or any other colour you wished to use and pick up the block and lay it an inch from the left hand side and vertically onto your card matching up the lines on your mat, once you are happy with the position, press down onto block and release and your ink is perfect.
- Then ink up the stamps again and this time we want to add the stamps horizontally across the card, again leaving an inch from the left. The precision Stamping Block is my most favourite tool, I could never get things even before, but I don't have any problems at all with mine now.



- We then want to add our sentiment stamp, this time using the 'Sent with Love' stamp, inking it up as before and stamp inside the vertical lines.

### How to make our Flowers:

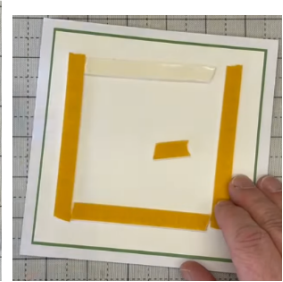
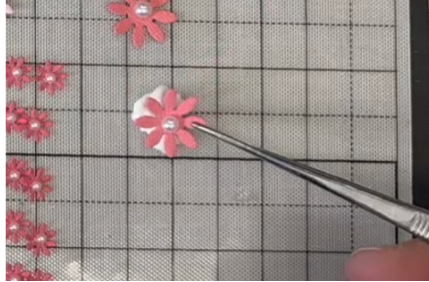
- We now want to make our flowers, for ease John is showing how to cut them out in white. Just tape down the die and run through your machine. Then add the die cut piece onto your moulding mat and using your ball tool press down hard into the middle of each flower and roll the ball tool around.



- If you wanted to add a centre into each flower you can add a dab of glue glaze into the centre of your flower and add a yellow dew drop into the centre, for the really tiny flowers add a small white pearl into the centre which has been coloured yellow using a marker pen. Then add onto the front of your card. This is not what we are going to do to our card today though.



- John has already cut and shaped his flowers, using scraps of Lilac, Lavender, Deep Pink, and Light Pink and added a small white pearl into the centre of each one. To add the flowers, add some wet glue onto the bottom of your mat and using a pair of tweezers pick up a flower and dab the back of it onto the glue, then adhere onto your card.



- Take your 6" x 6" card blank and add a layer of green card and coconut white card. Because our flowers are not dry yet, we can add foam tape onto the front of the card, remove the yellow backing and add the front panel straight onto it, being careful not to disturb the flowers.



Your creation is now complete. I hope you have enjoyed these instructions.