

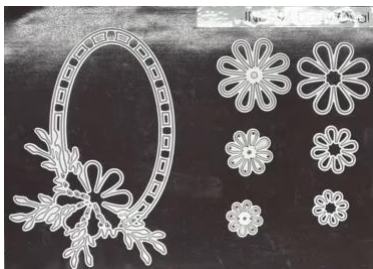
JND594 Daisy Oval - Classic Monochrome Card – 15 March 2026 - by John Lockwood



Instructions by June Smith

John has created a 'You Tube Video' dated 15th March 2026, using the new JND594 Daisy Oval Die set, as well as JND579 Emma's Ovals, & JND589 Roseberry Die Set, where he demonstrates how to make this card. I would advise that you visit it as well as following these instructions.

Information:



JND594 Daisy Oval

Die 1: Main Daisy Oval with circles around the inside of the frame

Die 2: Large double layer Daisy

Die 3: Large Outline Daisy

Die 4: Medium Daisy

Die 5: Medium Outline Daisy

Die 6: Small Daisy

Die 7: Small Outline Daisy



JND579 Emma's Ovals

Die 1: Stitched Outside Rectangle

Die 2: Inner Flower Patterns to fit inside die 1 and 3

Die 3: Inside and Outside Oval Frame

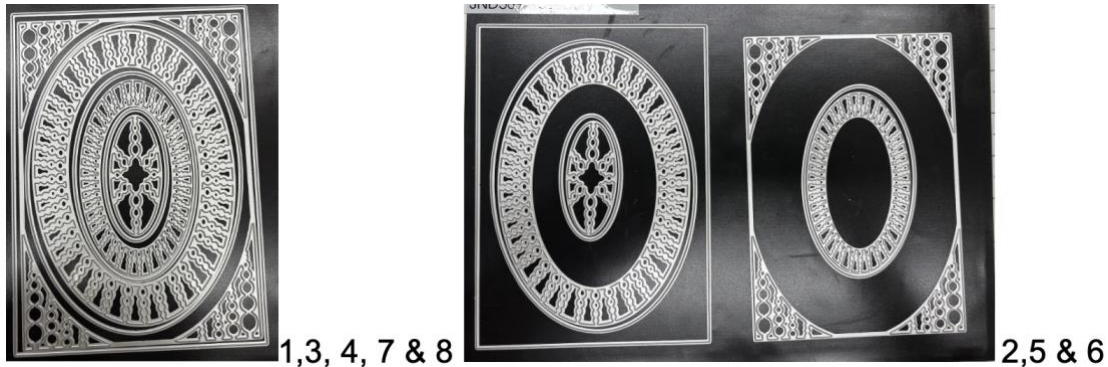
Die 4: Half Oval Daisies to fit inside the top of die 3

Die 5: Half Oval Daisies to fit on the bottom inside of die 3

Die 6: Smaller Flower Oval to fit inside die 3

Die 7: Smallest Oval

Die 8 :3 Flower



JND589 Rosebury Die Set (8)

Die No: 1 - Plain Rectangle

Die No: 2 - Rectangle with large oval in the middle and 4 decreasing hanging circle patterns in each corner.

Die No: 3 - Large Oval to fit to fit inside die no: 2

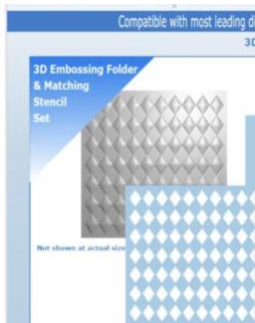
Die No: 4 - Oval with decorative circles inside circles (or stamens as John has called them) to fit inside die no: 3

Die No: 5 - Medium size Oval to fit inside die no: 4

Die No: 6 - Smaller version of die no: 4 that fits inside die no: 5

Die No: 7 – Small Oval to fit inside die no: 6

Die No: 8 – Centre Decorative Oval with 8 decorative circle patterns outside.



JND483 Argyle (sometimes called Harlequin) Embossing Folder & Stencil set

Materials

5½" x 7½" White Top Folding Card Blank

JND594 Daisy Oval Die Set (7)

JND579 Emma's Ovals Die Set (8)

JND589 Roseberry Die Set (8)

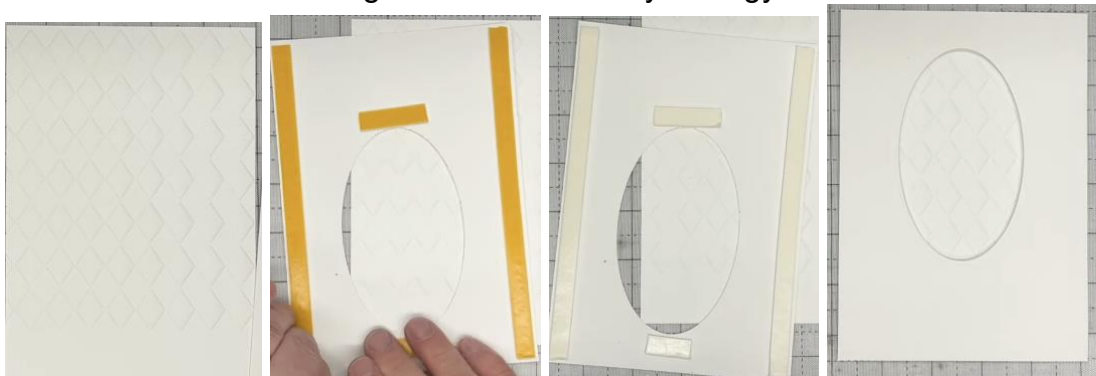
JND483 Argyle Embossing Folder
 Essential Coconut White Card
 Black Card
 Die Cutting Machine
 CA White Stick on Pearls various sizes
 Glue Glaze
 2mm Foam Tape
 Craft Kit

Method:

- Cut a piece of Coconut White card to 5" x 7" and bring in die No: 5 from the JND589 Roseberry die set and tape this down at about the top 2/3rds of the card and run through your die cutting machine. Then take the main Daisy Oval die and tape this down onto a piece of Black card and run that through your die cutting machine.
- You then have a white oval which we will use on another project, and you should have the 2 die cut pieces below, if you lay the black onto the white you get a perfect Oval pattern layer with solid circles on the inside.

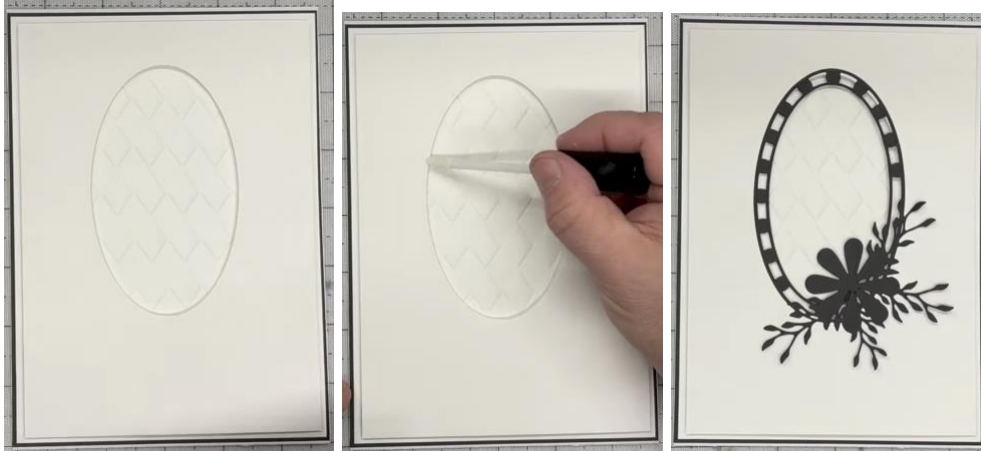


- Then take another piece of Coconut White card cut to 5" x 7" and run this through your Argyle Embossing Folder, then bring back in your white card with the oval cut out of it and on the back run a strip of foam tape down both long sides and also a small piece above and below the cut out oval shape, remove the backing and add this onto your argyle embossed card.

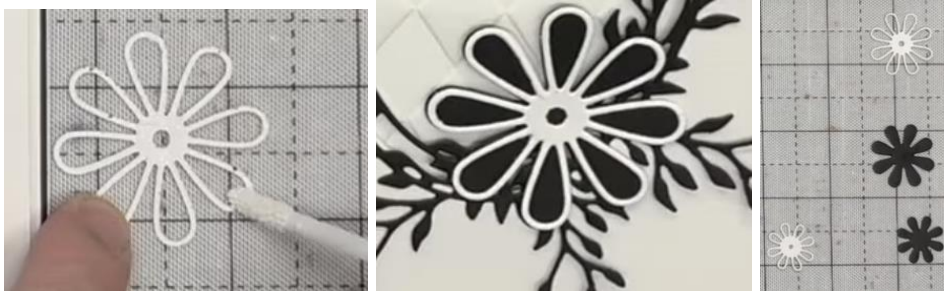


- Then bring in your white card blank and from black card cut add a layer that is 5" x 7", then a 5 1/4" x 7 1/4" Coconut white layer and finally another Coconut White layer at 5 3/8" x 7 3/8". Then add wet glue onto the back of your main piece and add this onto your layers. We want to add our black oval die cut now so the best thing to use is your glue glaze and run the glue around the

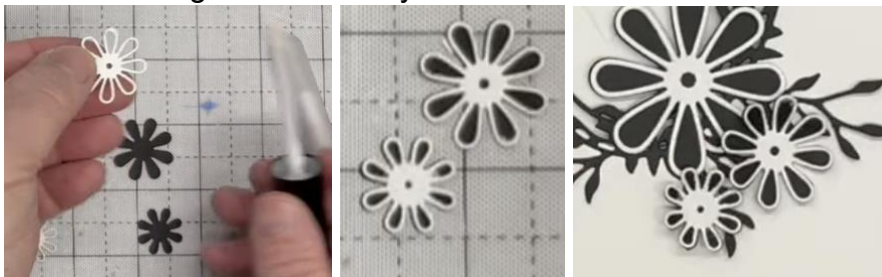
edge of the Oval; by using the wand you don't have any wet glue showing when you add the black Oval onto the card, you will also see that the leaves at the bottom are floating.



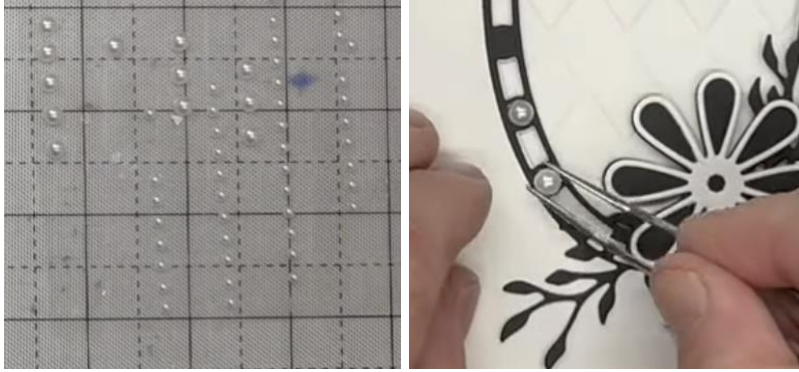
- Then using the outline Daisy Flower dies (3, 5, & 7) cut these out from your Coconut White and Black card. Add a little bit of glue glaze onto the middle and outside edges of the large white flower petals and add this onto the black daisy on your card.



- We then have the medium and small black and white daisies, so again using your glue glaze wand add the glue to the back of the white flower petals and add onto the solid black ones.
- Then hold the petals in the palm of your hand and gently press down in the middle to shape them, then add wet glue onto the back and adhere just below the large flower onto your card.



- Then take some of the stick on white pearls and add the larger ones onto the small black circles of your Oval, and also onto the centre of the 3 flowers. You could add a sentiment of choice onto the card.



- John has also made a similar card using a different embossing folder and without the white pearls, both of which deserve to be on these instructions.



Your creation is now complete. I hope you have enjoyed these instructions.