

Gatefold Silver & White Card Tutorial with JND617 Mini Rosetta Die - by John Lockwood

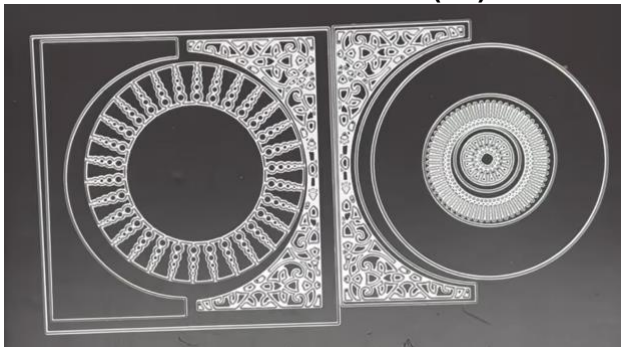


Instructions by June Smith

John has created a 'You Tube Video' dated 31 May 2026, using JND617 Mini Rosetta die set, where he demonstrates how to make this beautiful Spinning card above. I would advise that you visit it as well as following these instructions.

Information:

JND617 5" Mini Rosetta Die (11)



Die 1: 5¼" x 5¼" Square die

Die 2: Left half square with the right side as a half circle, this will fit inside die no: 1

Die 3: Detailed pattern die to fit inside die no: 2

Die 4: Right half square with the left side as a half circle, this will fit inside die no: 3

Die 5: Detailed pattern die to fit inside die no: 4

Die 6: Plain Circle die to fit inside dies 2 & 4

Die 7: Decorative circles inside circles (or stamens as John has called them) die to fit inside die no: 6

Die 8: Plain Circle die to fit inside die no: 7

Die 9: Smaller Decorative Starburst pattern die to fit inside die no: 8

Die 10: Smaller Circle die to fit inside die no: 9

Die 11: Centre Decorative circle which fits inside die no: 10

Materials:

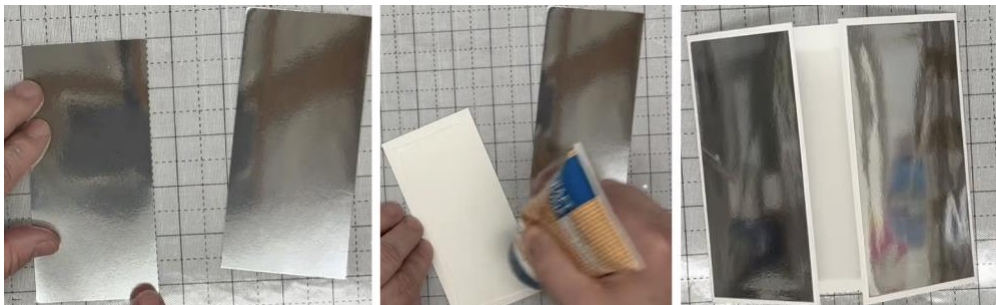
JND617 Mini Rosetta Die
CA Essential White Card
CA Silver Mirror Card
3M Spray Adhesive Display Mount
CA Stick on White Pearls
Die Cutting Machine
Craft Kit

Method:

- Cut a piece of Coconut White card to 5½" x 11", place this onto your multi-media mat, hold a ruler at the 5½ mark and fold over each side which is 2¾" from each side towards the middle, burnish the fold lines, John then turns the card over and folds from that way and burnish the fold lines. You have then created your gate fold card base. Another way of doing this is to use your scoreboard and score at 2¾" from the left side and right sides and burnish the folds.



- Cut 2 pieces of Silver Mirror Card at 5¼" x 2½", add wet glue onto the back of one piece and add this onto the front of the panel, then repeat for the other side.



- Then take a piece of coconut white card and add dies 2 & 3 which are the beautiful filigree and outside cutting die, evenly spaced together and tape them down and run through your die cutting machine. Then repeat with dies 4 & 5 together, tape them down evenly and run through your die cutting machine.
- Bring in your spray box or similar and add the filigree pieces face down onto it, then add spray glue onto them. Open your card out and adhere one of them on the silver mirror card so it is even on all 3 sides, then repeat for the other one side.



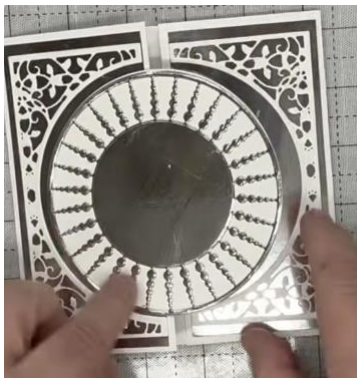
- Then take Die no: 6: Plain Circle die to fit inside dies 2 & 4 and cut out a Coconut white circle. Then turn it over and place it on your lined mat so you can see where the half way mark is and add foam tape onto just the left side, remove the backing



- We then want to create a central wheel for it so take another piece of silver mirror card, Die 6: Plain Circle die to fit inside dies 2 & 4 and Die 7: Decorative circles inside circles die to fit inside die no: 6. Take a long piece of tape and pick up the dies evenly and tape them down onto your silver mirror piece then run this through your die cutting machine.



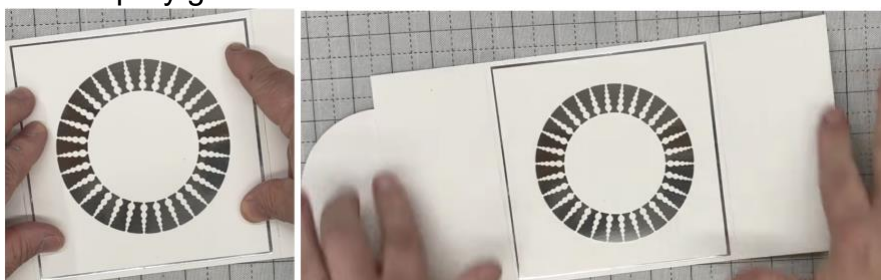
- Again, it is easier to add spray glue onto the back (but you can use wet glue if you prefer, just try not to get the glue onto the mirror card) and add this onto the front of the white circle making sure your points top and bottom are even. Put this to one side for now as we want to work on our centre panel.



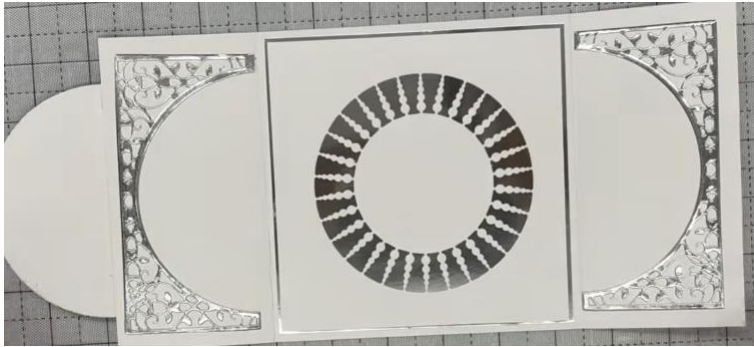
- Cut another piece of the Silver Mirror card to 5¼" x 5¼" add wet glue onto the back and adhere this onto the inside of the card.



- Then cut another piece of coconut white card to 5⅛" x 5⅛", tape down die no: 5 evenly in the centre and run through your die cutting machine. Again, add spray glue onto the back and adhere this onto the inside silver mirror square.



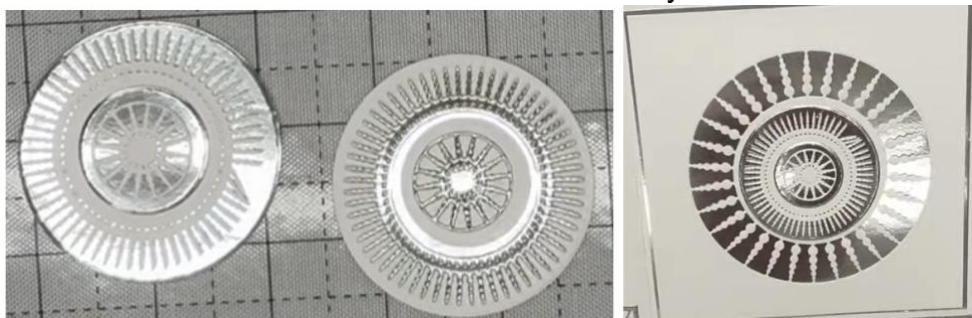
- We still have the 2 inside boring sides so cut 2 more of the decorative panels dies 2 & 3 and 4 & 5 from Silver mirror card, add them face down onto your spray box and add spray glue onto them, then you can add these onto the 2 sides.



- Then take dies 8, 9, 10, & 11 and cut them out of silver mirror card and also out of Coconut White Card. Take the spiky white piece and add wet glue onto the back and add onto the silver mirror circle. Then take the small silver circle and add wet glue onto the back and adhere onto the white. Then using the remaining pieces add these in the same way.

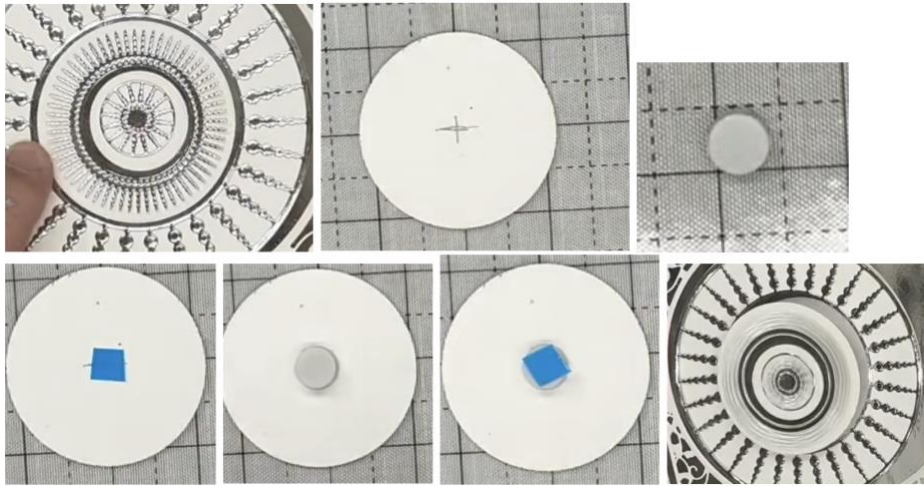


- Take the piece on the left which is the white onto silver and add wet glue onto the back and add this onto the inside of your card.



- Close your card up and we have the remaining circle piece, this is the piece that will be our spinner, so turn the circle over and using the lines on your mat to get it even then add a plus pencil mark in the middle, add a small piece of double sided sticky onto the plus, remove the blue backing and add your spinner onto it. Add another piece of powertape onto the spinner, remove the backing and add this onto the front of your card. I hope you can see on the

last photo that you can't see the spiky bits as it is spinning, you will see this on the you tube video.



- Finally, to finish this off take some of the Craft Artists white pearls and add one onto the middle of your card, and also add one onto each of the large circle spiky bits, it does take a lot of time but looks absolutely beautiful.



Your creation is now complete. I hope you have enjoyed these instructions.

John stole the idea for this card from Carol Bignall one of John's Angel's who made this card below with little strawberry flowers in the centre.

