

## JND597, 584, & 585 – Blue and Silver Framed Card - by John Lockwood



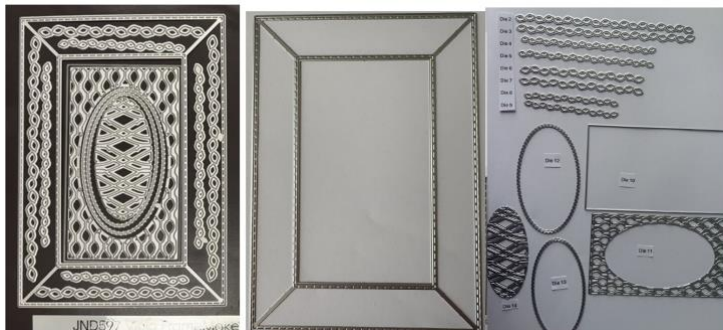
Instructions by June Smith

John has created a 'You Tube Video' dated 8th May 2026, using the new JND597, Viola FrameMaker die set, JND584 Peacock Flower die, JND585 Exotic Ferns and the outside frame from the JND598 Tiarella die set, which will be coming out in about a week's time, and also some papers from the Stamperia Timeless Paper Collection, where he demonstrates how to make this beautiful card above. I would advise that you visit it as well as following these instructions.

### Information:



### JND597 Viola FrameMaker



- Die 1: - 5" x 7" FrameMaker Stitched Rectangle
- Dies 2-3: Left & Right Vertical 6" Long Leaf Strips
- Dies 4-5 Left & Right 3" Short Horizontal Leaf Strips
- Dies 6 -7 Top & Bottom Vertical 4" Shorter Leaf Strips

Dies 8-9: Top & Bottom Vertical 3" Shorter Leaf Strips  
Die 10: 2<sup>3</sup>/<sub>4</sub>" x 4<sup>3</sup>/<sub>4</sub>" Plain Rectangle  
Die 11: Rectangle Leaf Pattern with Oval cut out from the centre  
Die 12: 3<sup>1</sup>/<sub>2</sub>" Double Stitched Oval  
Die 13: 3<sup>1</sup>/<sub>4</sub>" Double Stitched Inner Oval  
Die 14: Crisscross Pattern Die

### **JND598 Tiarella**



Die 1: - 4<sup>3</sup>/<sub>4</sub>" x 6<sup>3</sup>/<sub>4</sub>" Stitched Rectangle FrameMaker  
Dies 2-5: Ribbon Strips  
Dies 6: 3" x 5" Plain Rectangle  
Die 7: 2<sup>3</sup>/<sub>4</sub>" x 4<sup>3</sup>/<sub>4</sub>" Outer Leaf Pattern  
Die 8: 3<sup>5</sup>/<sub>8</sub>" x 2" Oval  
Die 9: 3<sup>1</sup>/<sub>2</sub>" x 1<sup>7</sup>/<sub>8</sub>" Inner Leaf Pattern

### **Materials:**

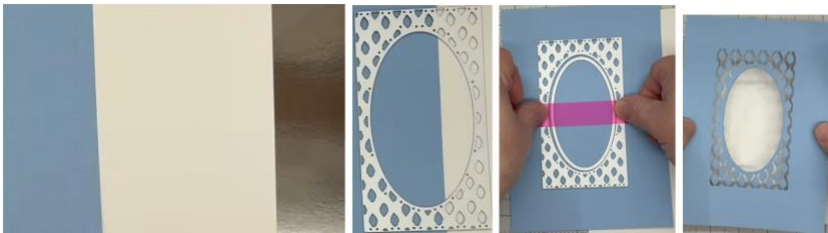
7" x 9" Top Folding Card Blank  
JND597 Viola FrameMaker Die (14)  
JND584 Peacock Flower Die  
JND585 Exotic Ferns Die  
CA Essential White Card  
Stamperia Timeless Paper Collection  
Silver Mirror Card  
Canvas Blue Card  
Die Cutting Machine  
Craft Kit

### **Method:**

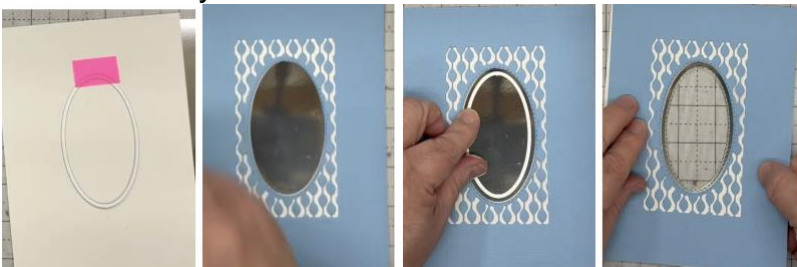
- From a piece of the Silver Mirror card cut out the 4<sup>3</sup>/<sub>4</sub>" x 6<sup>3</sup>/<sub>4</sub>" outside frame from the JND598 Tiarella die set (yes coming out very soon), then from your Stamperia Pattern Paper cut out the outside frame from JND597 Viola die set



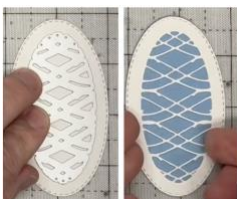
- Then take a Blue, Coconut White and Silver Mirror card and cut all these to just short of 5" x 7". Then bring in dies 11 and 12, take a long piece of repositionable tape and pick up the inner oval die, hover over the outer die until it is even and press the tape down, then run this through your die cutting machine.



- Then take die no: 13 again and what we want to do is to put this roughly in the middle of the Coconut White card. You get the stitched Coconut White Oval which we will use on a different project. We then have the Coconut White piece with the Oval cut from the middle. Place the white and blue pieces onto the front of your silver mirror card so they are even all the way around. We then want to take die no: 8 which is the smaller oval and tape this down onto the middle of your silver mirror card, then remove the blue and white pieces and run the silver mirror piece through your die cutting machine. Then when you place all the layers together, you get this beautiful stitched silver mirror Oval layer in the centre.

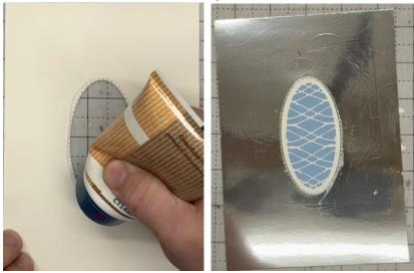


- If you then bring in the White Oval and tape down die no: 14 from the Viola set into the middle and run this through your die cutting machine, you get this lovely criss-cross pattern, turn this over and add wet glue onto the back and adhere this straight onto your blue Oval.

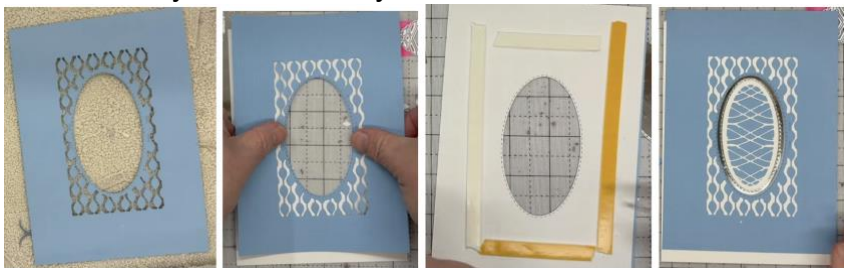


- Take the larger silver mirror layer and turn this over so you are looking at the back then add wet glue around the middle Oval cut out, you can just see the

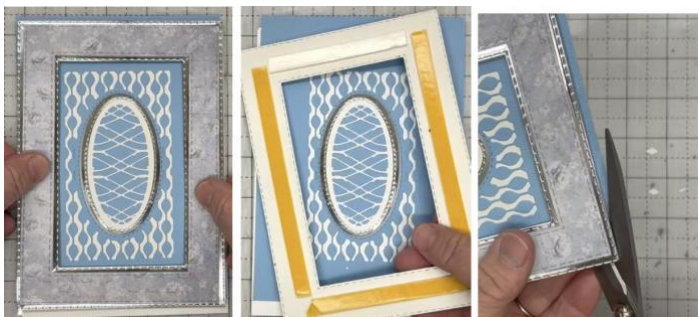
stitched detail around the Oval, then turn this over and add onto the Blue and White Oval layer.



- Bring in your spray box and place the Blue die cut panel face down onto it, add spray glue onto it and add this straight onto your White Panel. Turn this panel over and add foam tape onto the back, remove the backing and add this over your bottom layer.



- If you then bring in your FrameMaker piece, add foam tape onto the back, reveal the tape and add this over all of your layers. Take your large scissors and holding the card at an angle snip off the excess card that is showing behind the frame.



- Bring in your 7" x 9" top folding card blank and add a layer of Silver Mirror and Blue card onto it, also add a different layer of the pattern papers. Add wet glue onto the back of your main piece and add this straight onto the front of your card.



- John has already made up some of the Peacock Flowers from Silver Mirror card, and a set of the Exotic Ferns from Coconut White Card, he also has some small stick on pearls in a similar blueish colour to match the layers. Add

wet glue onto the back of a large left and also a right facing White Fern and add these onto the bottom left of your frame, then add wet glue down a smaller fern and add this facing towards the bottom left corner, then repeat this on the top right corner, see picture below.

- John has already cut and made up a set of the Peacock Flowers from Silver Mirror card and he has added a medium and small flower onto a large flower and then added a pearl into the centre. Using your Glue Gel and a cocktail stick add 3 Flowers onto the bottom left corner of the frame. Then repeated this adding 3 flowers onto the top right of the frame.



Your creation is now complete. I hope you have enjoyed these instructions.