

## JND609 Rochelle DL – Chinoiserie Butterfly Card - by John Lockwood



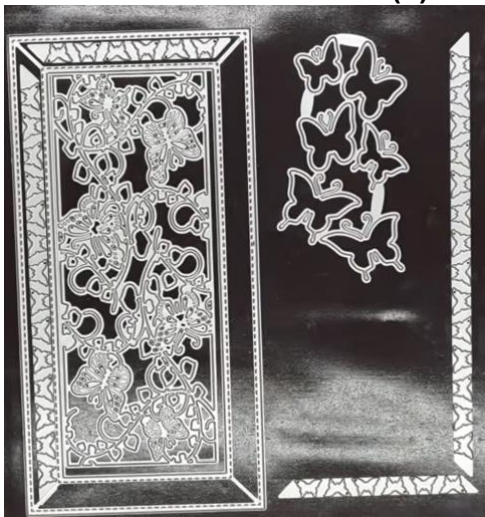
Instructions by June Smith

John has created a 'You Tube Video' dated 6th June 2026, using the new JND609 Rochelle DL FrameMaker die set, where he demonstrates how to make this beautiful card above which reminds you of Chinese or Japanese wallpaper, then when you open it up you have these gorgeous panels continuing inside and this beautiful centre with just the Butterflies in flight. I would advise that you visit it as well as following these instructions.

### Information:

The frame die itself matches together with the JND610 Salisbury Die Set (instructions for that are coming).

### JND609 Rochelle Die Set (7)



- Die 1 – Perfect DL size FrameMaker die 4" x 8" and  $\frac{5}{8}$ " wide
- Dies 2 & 4 Butterfly Panel dies about 7 $\frac{1}{2}$ " long
- Dies 3 & 5 Butterfly Panel dies 3 $\frac{3}{8}$ " long
- Die 6 – Beautiful Butterfly Panel die 2 $\frac{1}{2}$ " x 6 $\frac{1}{2}$ "
- Die 7 – Butterfly Panel which cuts out 6 solid Butterflies

**Materials:**

A3 White Card  
JND609 Rochelle Die Set (7)  
CA Essential White Card  
CA Non-shed fake Glitter Card – Soft Pink  
CA Small Stick on White Pearls  
Die Cutting Machine  
Craft Kit

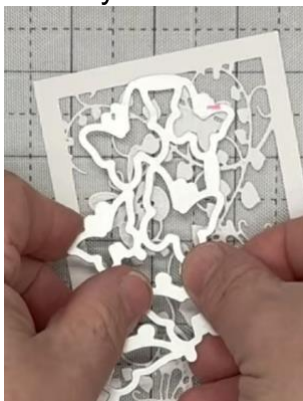
**Method:**

This first item is showing how to cut and make up one of the Butterfly panels, but we will want 4 of them in total.

- Cut a piece of Coconut white card to 3" x 7", and tape down well the die no: 6 which is the Beautiful Butterfly Panel die measuring 2½" x 6½", and make sure it is even all the way around then run through your die cutting machine and you will get this beautiful detailed intricate panel below. You will find that some of the Butterflies have cut out pieces and some are embossed, depending on what size they are. It has these beautiful leaf shape pattern die holding them together.



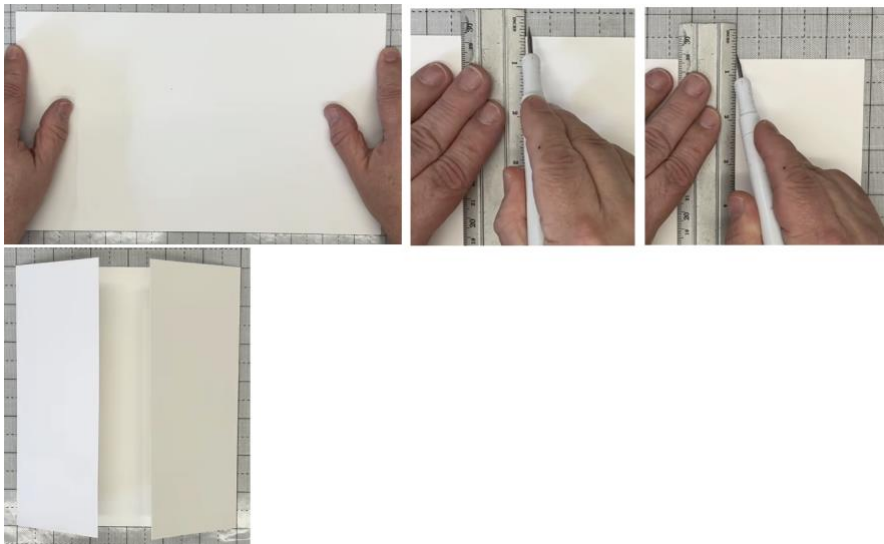
- If you bring in die no: 7 which is the Butterfly Panel which cuts out 6 solid Butterflies you can see it cuts out all the individual butterflies in order which fits behind the butterflies. There is another set of instructions coming which you will see how the Butterflies are used on that card.



- Cut a piece of Soft Pink non-shed fake glitter card to  $2\frac{7}{8}$ " x  $6\frac{7}{8}$ " which is just slightly smaller than the Butterfly panel, then add spray glue onto the back of the Butterfly panel and add onto the Soft Pink panel.



- What we now want to do is to make the card that these panels fit onto and to make the opening. So, take an A4 sheet of Coconut White card and trim it down to 7", (keep the waste strip from across the top as we will need this a bit later) then place this into the middle of the 12" section of the Multi-Purpose Craft so there is a little gap either side which John is pointing too. Then take your ruler and the 4-in-1 tool, place the ruler at the 3" mark and score down once. Then count the lines until you get to 6" on the right and score down there in the same way. So, each end piece is effectively  $2\frac{3}{4}$ ". Fold over and burnish both scored lines, you will notice that there is a small gap in the middle but don't worry the gap will not notice, all will be revealed.



- Bring in your panels and add wet glue straight onto the front right-hand panel, then add your pink panel exactly up to the right-hand edge. When you open the panel out you can see the edge showing at the end.



- Then repeat this process adding the panel on the left-hand side. When you close them up you can see that they are even in the middle and fit exactly. You can see how the pattern continues across the panels. Then open the card out so you can see the inside and apply wet glue onto the inside right hand panel and add another of the Butterfly panels onto it. Then repeat and add the remaining panel onto the inside left side. If you then close up the front you may have a little overlap which John has, this is quite normal, all you need to do is to bring in your guillotine and snip off the tiny little slither that was showing. Then when you close up the card again it is still nice and even on the front.

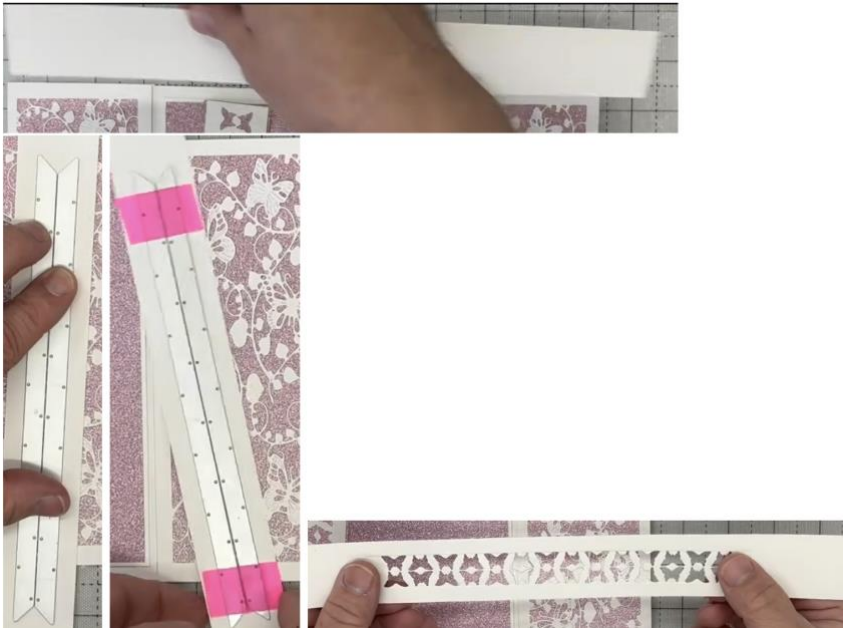


- We now want to decorate the inside. The panel inside is 6" x 7", so we need to cut the Coconut White card and the Soft Pink non shed Glitter piece just a little bit smaller, add wet glue onto the back of the soft pink and add onto the 5<sup>3</sup>/<sub>4</sub>" x 6<sup>3</sup>/<sub>4</sub>" Coconut White, then add wet glue onto the back and adhere evenly onto the middle panel.



- Then bring back in the Coconut White strip that was left over from cutting out the base card, add dies 2 and 4 and place them evenly face to face so that the middle holes are even, and you have dove tails at the top and bottom edges and tape them down together, then run this through your die cutting

machine. You then get this beautiful strip with the butterflies face off against each other.



- You also have some tiny little butterflies, and we are going to use 3 of these, so add a little bit of wet glue onto the bottom right-hand side of the Soft Pink and add a white Butterfly onto it, then repeat adding 2 more Butterflies.
- Then cut a 7" x 1½" wide piece of the soft pink glitter card, add wet glue onto the back of the white piece and add onto the Soft Pink Strip, then add wet glue onto the back and we are going to flat glue this down at about ¾" in from the fold.



- We now want to make the centre of our card, cut a piece of the Coconut White card which is 3" x 5" and tape down die no: 7 which is the butterfly spray and run through your die cutting machine. John has already cut out a Coconut White layer which looks as though it is just over 3" wide x just over 5" long and added a slightly smaller layer of the Soft Pink Glitter onto it, then added the Coconut White Butterfly panel piece evenly on top. Turn this over and add wet glue onto the back and adhere this into the centre of the card so that you see one little row of butterflies it just offset at the side.



- Finally, John has already got the white die cut butterflies from the front of the panel we just made above, and we want another set of the 6 Butterflies cut out from the Soft Pink Glitter card, and some small stick on white pearls. **Tip:** lay the white butterflies out onto your table, so when you want to add them it is easier to see which shape it is. John is opening a new glue glaze for this and adding a little bit of the glue glaze onto the middle body of the Soft Pink Butterflies then drop in the corresponding size of White Butterflies into each one. Then holding the middle body of each Butterfly with your 4-in-1-tool and using your fingers bring up the wings as if they are flying. You need to do this to each one. Leave them a few minutes to let them dry fully before we do the next bit, if you notice that one of them is not suck down, just add a bit more of the glue glaze to the body and re-stick them down.



There we have the gorgeous centre inside of our Chinoiserie card made, which folds virtually flat. You could make a box for this and decorate the front of it with any left-over Butterflies.



Your creation is now complete. I hope you have enjoyed these instructions.

Why not visit the official page on Facebook or watch some more video's over here on our You Tube Channel, remember you can save each of these 'You Tubes' which you can refer back to whenever you need to.